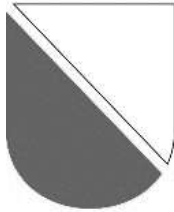
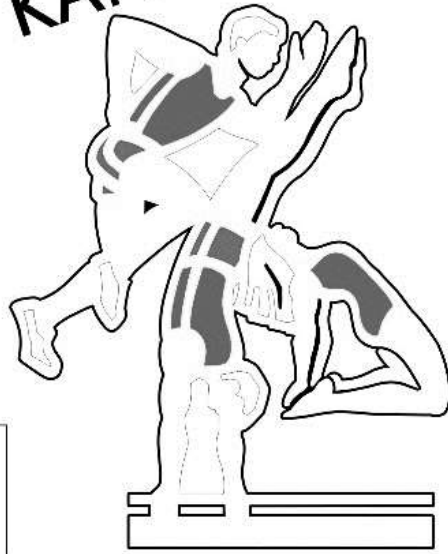


KANTONALER

2017



JUGENDSPORTTAG



Rangliste Sonntag 21. Mai 2017

Patronat

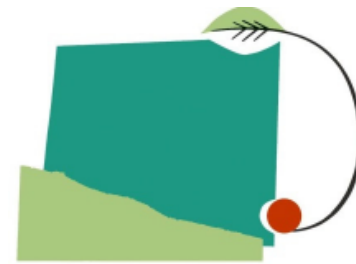


Hauptsponsorin



Wir danken unseren Partnern und Gönnern für die grosszügige Unterstützung:

Hauptsponsorin



all-com ag
Hofmannstrasse 26
8405 Winterthur
Tel. +41 52 265 10 00
Fax. +41 52 265 10 09

info@all-com.ch



Hauptsponsorin



boreas

Mehrwert schaffen

boreas ag – Stockerstrasse 26 – 8614 Bertschikon
Tel. 043 443 12 30 – E-Mail info@boreas.ch

aplix
industrie

Einkauf, Lager, Logistik
Produktionsplanung
Verkauf

aplix
handel

Einkauf, Lager
Verkauf

aplix
dienstleistung

Service, Reparatur
Wartung
Leistungserfassung

Der kompetente Partner für

IT-Beratung
Software-Lösungen
Internet-Auftritte
Schulung

Dieser Anlass wurde durch uns im
Bereich Rechnungsbüro
professionell unterstützt :

Für weitere Auskünfte wende Dich
an Uwe Singer.

- Begleitung während der Organisation
- Bereitstellung des kompletten Netzwerkes (Server, PC's)
- Kostenlose Nutzungsrechte der Auswertungs-Software
- Vollständige Datenaufbereitung (Anmeldungen)
- Vollständige Ausbildung des Kernteams
- 24h-Hotline am Ausführungswochenende
- „Vor Ort“-Betreuung am Wettkampftag

Allround

A (Mädchen)

Rang	Person	Jg	Verein	Leistungen	Total	
1	Seraina Jung	2002	Buch am Irchel	BO:09.80 (09.80) / WE:9.70 (4.20) / SS:10.00 (190) / STB:09.80 (09.80)	39.30	G
2	Selina Amon	2001	Rheinau	BO:09.80 (09.80) / STH:10.00 (35) / WE:9.80 (4.39) / STB:09.60 (09.60)	39.20	S
3	Nina Maurer	2002	Trüllikon	BO:09.90 (09.90) / WE:9.50 (4.01) / SS:9.90 (178) / STB:09.80 (09.80)	39.10	B
4	Lea Binder	2001	Rheinau	STH:10.00 (35) / SL:9.60 (00:11.87) / KU:9.70 (7.90) / STB:09.70 (09.70)	39.00	*
5	Svenja Riedo	2002	Rheinau	STH:10.00 (35) / WE:9.40 (3.95) / SL:9.50 (00:12.00) / STB:09.80 (09.80)	38.70	*
	Julia Steiner	2002	Ossingen	BO:09.35 (09.35) / STH:10.00 (35) / KU:10.00 (9.60) / SP:09.35 (09.35)	38.70	*
7	Vanya Ehrismann	2001	Andelfingen	BO:09.35 (09.35) / SL:9.30 (00:12.41) / FIT:9.70 (00:31.72) / STB:09.80 (09.80)	38.15	*
8	Isabelle Lütscher	2002	Trüllikon	BO:08.75 (08.75) / SL:9.70 (00:11.74) / SS:9.70 (175) / STB:09.65 (09.65)	37.80	*
9	Michelle Reutimann	2002	Stammertal	BO:09.10 (09.10) / WE:9.30 (3.86) / SL:9.60 (00:11.97) / STB:09.50 (09.50)	37.50	*
10	Elisa Wepfer	2001	Stammertal	WE:9.50 (4.06) / SS:9.50 (170) / STB:09.75 (09.75) / SP:08.60 (08.60)	37.35	*
11	Livia Aebersold	2002	Buch am Irchel	BO:09.70 (09.70) / FIT:9.10 (00:35.44) / SS:8.90 (159) / STB:09.60 (09.60)	37.30	*
12	Sahira Gerber	2002	Oberwinterthur	BO:08.45 (08.45) / SL:8.80 (00:13.00) / SS:9.70 (175) / STB:09.70 (09.70)	36.65	*
13	Enya Meier	2001	Andelfingen	WE:9.20 (3.79) / SL:9.50 (00:12.12) / ZW:9.00 (20) / STB:08.85 (08.85)	36.55	*
14	Ronja Früh	2002	Andelfingen	BO:08.85 (08.85) / WE:9.70 (4.27) / SL:8.90 (00:12.91) / STB:09.00 (09.00)	36.45	*
15	Melanie Zender	2002	Rheinau	BO:08.80 (08.80) / SL:9.40 (00:12.32) / FIT:9.25 (00:34.72) / STB:08.90 (08.90)	36.35	*
16	Anina Biber	2001	Rickenbach	BO:08.65 (08.65) / WE:9.00 (3.53) / KU:8.80 (6.58) / STB:09.40 (09.40)	35.85	*
17	Medina Rahmani	2001	Rheinau	BO:08.60 (08.60) / STH:9.60 (33) / KU:9.20 (7.12) / STB:08.30 (08.30)	35.70	
18	Joelle Stettler	2001	Stammertal	BO:09.70 (09.70) / WE:9.10 (3.65) / ZW:8.00 (16) / SP:08.70 (08.70)	35.50	
19	Anne-Catherine Sackmann	2002	Oberwinterthur	WE:9.10 (3.65) / ZW:8.00 (16) / SS:8.70 (155) / STB:09.65 (09.65)	35.45	
20	Celina Huber	2002	Andelfingen	BO:07.55 (07.55) / WE:9.40 (3.92) / SL:9.50 (00:12.12) / FIT:8.95 (00:36.62)	35.40	
21	Vivien Buchbinder	2002	Oberwinterthur	BO:09.50 (09.50) / WE:9.00 (3.56) / STB:09.35 (09.35) / SP:07.50 (07.50)	35.35	
22	Martina Colletti	2001	Andelfingen	WE:9.20 (3.75) / SL:9.30 (00:12.54) / SS:9.80 (177) / STB:06.90 (06.90)	35.20	
23	Jacqueline Brunner	2001	Neftenbach	BO:09.00 (09.00) / HW:8.30 (1.10) / WE:9.80 (4.30) / ZW:8.00 (16)	35.10	
	Nadja Frei	2002	Stammertal	HW:8.30 (1.10) / SL:9.30 (00:12.50) / FIT:9.10 (00:35.69) / STB:08.40 (08.40)	35.10	
25	Tanja Fischer	2002	Andelfingen	BO:08.65 (08.65) / KU:9.60 (7.74) / SS:8.80 (157) / STB:08.00 (08.00)	35.05	
26	Michelle Metzger	2002	Oberwinterthur	BO:09.50 (09.50) / SS:7.40 (129) / STB:09.90 (09.90) / SP:08.20 (08.20)	35.00	
27	Lea Widmer	2002	Stammertal	HW:8.30 (1.10) / SL:8.90 (00:12.94) / FIT:9.25 (00:34.97) / STB:08.40 (08.40)	34.85	
28	Zoe Widmer	2002	Stammertal	HW:8.60 (1.15) / WE:9.40 (3.90) / KU:8.80 (6.53) / STB:07.80 (07.80)	34.60	
29	Sarina Karrer	2002	Andelfingen	BO:08.55 (08.55) / SL:9.30 (00:12.50) / SS:8.70 (155) / STB:07.90 (07.90)	34.45	
30	Yamna Keller	2002	Pfungen	HW:8.00 (1.05) / WE:9.30 (3.86) / SL:9.50 (00:12.13) / SS:7.60 (133)	34.40	
31	Jasmine Schwarzenbach	2002	Andelfingen	BO:09.35 (09.35) / WE:8.90 (3.42) / ZW:7.50 (14) / SS:8.60 (152)	34.35	
	Adrienne Girod	2002	Stammertal	BO:09.10 (09.10) / WE:8.90 (3.40) / STB:07.70 (07.70) / SP:08.65 (08.65)	34.35	
33	Laurelle Merkli	2002	Andelfingen	KU:8.50 (5.94) / FIT:8.65 (00:38.87) / ZW:8.25 (17) / STB:08.45 (08.45)	33.85	
34	Patricia Huber	2002	Neftenbach	BO:07.70 (07.70) / FIT:8.50 (00:39.34) / STB:08.15 (08.15) / SP:08.85 (08.85)	33.20	
35	Vanessa Reutemann	2002	Ossingen	BO:07.85 (07.85) / WE:8.60 (3.24) / SL:8.40 (00:13.53) / FIT:8.20 (00:41.78)	33.05	
36	Nadia Spychiger	2001	Andelfingen	BO:08.50 (08.50) / FIT:9.25 (00:34.66) / ZW:6.50 (09) / STB:08.00 (08.00)	32.25	
37	Meret Hallauer	2002	Andelfingen	BO:08.30 (08.30) / ZW:7.50 (14) / SS:8.80 (157) / STB:07.20 (07.20)	31.80	
38	Julia Stadler	2002	Trüllikon	WE:8.30 (3.11) / SL:8.00 (00:14.49) / FIT:6.55 (00:53.00) / STB:08.50 (08.50)	31.35	
39	Selina Joho	2002	Andelfingen	BO:08.40 (08.40) / WE:7.50 (2.80) / ZW:7.50 (14) / SS:7.90 (139)	31.30	

Allround

B (Mädchen)

Rang	Person	Jg	Verein	Leistungen	Total
1	Sophie Gürtler	2004	Trüllikon	STH:10.00 (35) / WE:10.00 (4.88) / SL:10.00 (00:10.50) / SS:10.00 (208)	40.00 G
2	Marisa Erb	2003	Andelfingen	BO:10.00 (10.00) / WE:10.00 (4.62) / SS:10.00 (173) / STB:09.65 (09.65)	39.65 S
3	Kim Krähenmann	2003	Stammertal	BO:09.80 (09.80) / WE:10.00 (35) / STH:10.00 (35) / WE:9.70 (3.98) / SP:10.00 (10.00)	39.50 B
4	Marie Wanzki	2003	Töss	BO:09.75 (09.75) / WE:10.00 (4.29) / SL:10.00 (00:11.69) / STB:09.70 (09.70)	39.45 *
5	Leah Frauenfelder	2003	Pfungen	STH:10.00 (35) / WE:9.90 (4.18) / SL:10.00 (00:11.61) / STB:09.40 (09.40)	39.30 *
6	Anika Weilenmann	2003	Buch am Irchel	BO:10.00 (10.00) / WE:9.60 (3.85) / FIT:9.85 (00:32.25) / STB:09.80 (09.80)	39.25 *
7	Riccarda Gross	2003	Buch am Irchel	BO:09.80 (09.80) / SL:10.00 (00:11.59) / FIT:9.70 (00:33.07) / STB:09.70 (09.70)	39.20 *
8	Jasmin Rindlisbacher	2004	Ossingen	BO:09.70 (09.70) / WE:9.80 (4.05) / SL:9.90 (00:11.94) / STB:09.70 (09.70)	39.10 *
9	Jasmine Tobler	2004	Andelfingen	BO:09.70 (09.70) / SL:9.90 (00:11.87) / SS:10.00 (173) / STB:09.45 (09.45)	39.05 *
10	Alexandra Gentsch	2004	Stammertal	BO:09.65 (09.65) / FIT:9.55 (00:34.37) / STB:09.80 (09.80) / SP:09.70 (09.70)	38.70 *
	Anna-Lena Kleibusch	2004	Stammertal	BO:09.60 (09.60) / SL:9.60 (00:12.46) / STB:09.70 (09.70) / SP:09.80 (09.80)	38.70 *
12	Sara Fraefel	2003	Trüllikon	BO:08.95 (08.95) / WE:10.00 (4.27) / SL:10.00 (00:11.71) / STB:09.50 (09.50)	38.45 *
	Melina Baumann	2004	Pfungen	WE:9.60 (3.80) / FIT:9.85 (00:32.97) / SS:9.40 (158) / STB:09.60 (09.60)	38.45 *
14	Rahel Bissegger	2003	Wiesendangen	BO:09.70 (09.70) / WE:9.30 (3.55) / SL:9.80 (00:12.07) / SP:09.45 (09.45)	38.25 *
15	Jasmin Aeberhardt	2003	Buch am Irchel	STH:10.00 (35) / WE:10.00 (4.30) / SL:10.00 (00:10.98) / SS:8.20 (135)	38.20 *
	Zina Holzweiss	2004	Pfungen	HW:10.00 (1.25) / WE:9.60 (3.80) / SL:9.60 (00:12.47) / SS:9.00 (150)	38.20 *
17	Fanny Hallauer	2004	Andelfingen	BO:09.55 (09.55) / WE:9.80 (4.03) / FIT:9.70 (00:33.59) / STB:09.10 (09.10)	38.15 *
	Lorena Gauggel	2004	Neftenbach	STH:10.00 (35) / SL:10.00 (00:11.37) / FIT:9.55 (00:34.57) / SS:8.60 (142)	38.15 *
19	Lija Barz	2003	Trüllikon	WE:9.80 (4.01) / SL:9.80 (00:12.09) / SS:9.40 (158) / STB:09.10 (09.10)	38.10 *
	Vanessa Frauenfelder	2003	Pfungen	HW:9.20 (1.15) / WE:9.50 (3.75) / SL:9.80 (00:12.09) / SS:9.60 (163)	38.10 *
21	Lena Eichmann	2004	Seuzach	BO:09.50 (09.50) / SS:10.00 (183) / STB:09.60 (09.60) / SP:08.95 (08.95)	38.05 *
22	Nora Thoma	2004	Andelfingen	BO:09.20 (09.20) / WE:9.40 (3.67) / FIT:9.40 (00:35.53) / ZW:10.00 (23)	38.00 *
	Melinda Rio	2003	Stammertal	BO:09.00 (09.00) / WE:9.80 (4.07) / SL:10.00 (00:11.69) / STB:09.20 (09.20)	38.00 *
	Simona Achermann	2004	Oberwinterthur	WE:9.30 (3.50) / SS:9.80 (167) / STB:09.60 (09.60) / SP:09.30 (09.30)	38.00 *
25	Lisa Egli	2003	Neftenbach	HW:8.60 (1.05) / WE:9.70 (3.90) / SL:9.90 (00:11.87) / FIT:9.70 (00:33.25)	37.90 *
	Dana Stöckli	2003	Stammertal	BO:09.10 (09.10) / WE:9.70 (3.97) / SL:9.50 (00:12.50) / STB:09.60 (09.60)	37.90 *
27	Alessia Cottiat	2004	Neftenbach	BO:09.15 (09.15) / WE:9.80 (4.03) / SL:8.90 (00:13.16) / FIT:10.00 (00:31.85)	37.85 *
28	Iliana Tomczyk	2003	Ossingen	BO:08.60 (08.60) / WE:10.00 (4.23) / SL:9.40 (00:12.66) / SS:9.80 (167)	37.80 *
	Nerida Rösli	2004	Ossingen	BO:09.10 (09.10) / WE:9.60 (3.88) / SL:9.80 (00:12.02) / SS:9.30 (157)	37.80 *
	Lea Biedermann	2004	Andelfingen	BO:09.05 (09.05) / FIT:9.40 (00:35.82) / SS:9.90 (169) / STB:09.45 (09.45)	37.80 *
31	Eline Meichtry	2003	Hegi	BO:09.25 (09.25) / SL:9.40 (00:12.60) / SS:10.00 (178) / STB:09.10 (09.10)	37.75 *
32	Anna Hürlimann	2004	Andelfingen	BO:09.00 (09.00) / WE:9.80 (4.05) / SL:9.50 (00:12.59) / STB:09.40 (09.40)	37.70 *
33	Nadja Stahel	2004	Stammertal	BO:09.60 (09.60) / FIT:9.25 (00:36.06) / ZW:9.00 (19) / STB:09.75 (09.75)	37.60 *
34	Adriana Demhasaj	2003	Benken	STH:10.00 (35) / SL:9.60 (00:12.44) / SS:9.60 (163) / STB:08.35 (08.35)	37.55 *
35	Jana Steinmeier	2003	Rheinau	STH:10.00 (35) / KU:9.00 (6.44) / FIT:9.25 (00:36.50) / STB:09.20 (09.20)	37.45 *
36	Shila Suter	2003	Pfungen	STH:10.00 (35) / SL:9.30 (00:12.78) / FIT:8.50 (00:41.41) / SS:9.50 (160)	37.30 *
37	Ida Nell	2004	Neftenbach	BO:09.30 (09.30) / SL:9.10 (00:12.93) / FIT:9.25 (00:36.44) / STB:09.60 (09.60)	37.25 *
	Nina Meier	2004	Wiesendangen	BO:09.80 (09.80) / WE:9.50 (3.77) / ZW:8.50 (17) / SP:09.45 (09.45)	37.25 *
39	Luana Truninger	2004	Andelfingen	WE:9.70 (3.93) / SL:9.20 (00:12.84) / FIT:9.40 (00:35.47) / STB:08.90 (08.90)	37.20

Rang	Person	Jg	Verein	Leistungen	Total
40	Nyma Büwang	2004	Neftenbach	BO:09.70 (09.70) / SS:8.60 (143) / STB:09.70 (09.70) / SP:09.10 (09.10)	37.10
	Linda Lüchinger	2004	Hegi	BO:09.15 (09.15) / WE:9.30 (3.57) / STB:09.55 (09.55) / SP:09.10 (09.10)	37.10
42	Sarina Steiner	2004	Ossingen	BO:09.50 (09.50) / ZW:8.25 (16) / SS:10.00 (182) / STB:09.30 (09.30)	37.05
	Lana Lötscher	2004	Stammertal	BO:09.65 (09.65) / SL:9.60 (00:12.47) / SS:8.10 (132) / STB:09.70 (09.70)	37.05
	Florina Friedli	2004	Rickenbach	BO:08.90 (08.90) / FIT:9.55 (00:34.94) / ZW:9.00 (19) / STB:09.60 (09.60)	37.05
45	Mia Lubrano	2003	Benken	STH:10.00 (35) / KU:8.90 (6.28) / SS:10.00 (182) / STB:08.10 (08.10)	37.00
	Kaya Stöckli	2003	Stammertal	STH:10.00 (35) / WE:9.20 (3.40) / STB:09.40 (09.40) / SP:08.40 (08.40)	37.00
47	Noemi Rizzo	2004	Buch am Irchel	BO:09.25 (09.25) / WE:9.30 (3.57) / SL:9.00 (00:13.00) / STB:09.40 (09.40)	36.95
48	Dina Wegmann	2003	Benken	STH:10.00 (35) / SL:8.40 (00:13.72) / KU:8.50 (5.47) / SS:10.00 (173)	36.90
	Selina Wacker	2003	Buch am Irchel	BO:09.20 (09.20) / WE:9.20 (3.47) / STB:09.40 (09.40) / SP:09.10 (09.10)	36.90
50	Zoe Uysal	2003	Räterschen	BO:09.00 (09.00) / WE:9.50 (3.75) / SL:9.70 (00:12.28) / SP:08.65 (08.65)	36.85
	Elisa Meyer	2003	Andelfingen	BO:08.65 (08.65) / WE:9.50 (3.71) / SL:9.80 (00:12.12) / SS:8.90 (149)	36.85
52	Maimuna Barry	2003	Neftenbach	BO:08.50 (08.50) / STH:10.00 (35) / KU:9.30 (7.00) / STB:09.00 (09.00)	36.80
53	Aline Joho	2004	Andelfingen	BO:09.30 (09.30) / FIT:9.25 (00:36.41) / SS:9.30 (157) / STB:08.85 (08.85)	36.70
	Mandy Girsberger	2003	Henggart	BO:09.60 (09.60) / SL:9.60 (00:12.45) / ZW:7.75 (14) / STB:09.75 (09.75)	36.70
	Emy-Lou Bühler	2003	Neftenbach	SL:8.90 (00:13.16) / FIT:9.85 (00:32.59) / ZW:9.25 (20) / SP:08.70 (08.70)	36.70
	Ronja Billing	2004	Trüllikon	BO:08.70 (08.70) / WE:9.60 (3.80) / FIT:9.40 (00:35.13) / STB:09.00 (09.00)	36.70
57	Paula Eichler	2004	Wiesendangen	BO:09.40 (09.40) / SL:9.90 (00:11.94) / KU:8.80 (6.12) / ZW:8.50 (17)	36.60
	Nadja Bosshard	2003	Neftenbach	BO:09.30 (09.30) / SS:10.00 (180) / STB:09.50 (09.50) / SP:07.80 (07.80)	36.60
	Livia Grab	2003	Andelfingen	BO:09.50 (09.50) / KU:9.00 (6.44) / SS:8.90 (148) / STB:09.20 (09.20)	36.60
60	Martina Roknic	2004	Pfungen	HW:8.30 (1.00) / WE:9.30 (3.59) / SL:9.30 (00:12.71) / SS:9.60 (163)	36.50
61	Alessandra Gorgone	2004	Pfungen	WE:9.30 (3.54) / FIT:9.85 (00:32.47) / SS:8.00 (130) / STB:09.30 (09.30)	36.45
	Kim Iten	2004	Neftenbach	BO:09.15 (09.15) / FIT:9.55 (00:34.40) / STB:08.90 (08.90) / SP:08.85 (08.85)	36.45
	Adriana Margeta	2004	Wiesendangen	BO:09.50 (09.50) / WE:9.20 (3.47) / SL:8.70 (00:13.31) / SP:09.05 (09.05)	36.45
64	Martina Congiusti	2004	Oberwinterthur	BO:08.50 (08.50) / WE:9.40 (3.62) / SS:9.60 (162) / SP:08.90 (08.90)	36.40
	Elly Lüthi	2004	Andelfingen	WE:9.40 (3.65) / SL:9.50 (00:12.53) / SS:8.20 (134) / STB:09.30 (09.30)	36.40
	Yasmin Frutos Grützmacher	2004	Pfungen	HW:8.00 (0.95) / WE:9.30 (3.52) / SS:10.00 (187) / STB:09.10 (09.10)	36.40
67	Michelle Gretener	2003	Buch am Irchel	BO:09.40 (09.40) / SS:8.00 (130) / STB:09.30 (09.30) / SP:09.65 (09.65)	36.35
68	Fiona Huber	2004	Brütten	HW:8.90 (1.10) / WE:9.30 (3.56) / ZW:8.50 (17) / SP:09.60 (09.60)	36.30
69	Luana Dimmler	2004	Buch am Irchel	BO:08.85 (08.85) / WE:9.30 (3.51) / FIT:9.70 (00:33.25) / STB:08.40 (08.40)	36.25
70	Chantal Maier	2004	Wiesendangen	BO:09.45 (09.45) / SL:9.30 (00:12.78) / KU:7.90 (4.22) / FIT:9.55 (00:34.94)	36.20
71	Lena Weyn	2004	Oberwinterthur	BO:09.20 (09.20) / WE:9.10 (3.34) / ZW:8.25 (16) / STB:09.55 (09.55)	36.10
72	Chiara Rosano	2004	Räterschen	BO:09.45 (09.45) / FIT:9.55 (00:34.75) / ZW:8.00 (15) / SP:09.00 (09.00)	36.00
	Svenja Crevatin	2003	Hegi	HW:9.60 (1.20) / WE:9.50 (3.70) / SL:8.90 (00:13.16) / ZW:8.00 (15)	36.00
74	Shyana Schneckenburger	2004	Andelfingen	BO:08.50 (08.50) / WE:9.60 (3.82) / SL:9.10 (00:12.97) / STB:08.70 (08.70)	35.90
75	Celina Spaltenstein	2004	Andelfingen	BO:09.25 (09.25) / WE:9.40 (3.67) / SS:7.90 (128) / STB:09.30 (09.30)	35.85
76	Ramona Kleindienst	2003	Andelfingen	HW:8.00 (0.95) / WE:9.60 (3.81) / SL:9.60 (00:12.41) / ZW:8.50 (17)	35.70
	Alekta Alusi	2003	Neftenbach	BO:08.00 (08.00) / SL:9.00 (00:13.00) / SS:9.20 (154) / STB:09.50 (09.50)	35.70
78	Nadia Wolfensberger	2004	Neftenbach	STH:10.00 (35) / SL:9.10 (00:12.91) / FIT:9.40 (00:35.19) / ZW:7.00 (11)	35.50
	Philomena Brandenberger	2004	Neftenbach	BO:09.10 (09.10) / STH:10.00 (35) / ZW:8.00 (15) / STB:08.40 (08.40)	35.50
	Vanessa Kern	2004	Pfungen	HW:8.30 (1.00) / WE:8.90 (3.16) / FIT:9.40 (00:35.75) / STB:08.90 (08.90)	35.50

Rang	Person	Jg	Verein	Leistungen	Total
81	Dominique Erb	2003	Neftenbach	BO:08.90 (08.90) / WE:8.60 (3.05) / FIT:8.05 (00:44.25) / STB:09.40 (09.40)	34.95
82	Annina Menzi	2004	Stammertal	STH:6.50 (16) / FIT:9.55 (00:34.94) / STB:09.70 (09.70) / SP:09.00 (09.00)	34.75
83	Vicki Schmied	2003	Neftenbach	WE:9.00 (3.24) / SL:8.50 (00:13.62) / ZW:7.75 (14) / STB:09.35 (09.35)	34.60
	Nadja Depeder	2004	Oberwinterthur	HW:8.00 (0.95) / SL:9.00 (00:13.03) / ZW:8.50 (17) / STB:09.10 (09.10)	34.60
85	Sara Carbonell	2004	Räterschen	BO:09.25 (09.25) / FIT:8.80 (00:39.81) / ZW:7.75 (14) / SP:08.70 (08.70)	34.50
	Ariadni Sigalas	2004	Wiesendangen	BO:09.50 (09.50) / WE:7.60 (2.65) / SL:8.80 (00:13.25) / SP:08.60 (08.60)	34.50
87	Arwen Baumann	2003	Rickenbach	BO:08.85 (08.85) / SL:8.30 (00:14.00) / KU:7.80 (4.08) / STB:09.40 (09.40)	34.35
	Ladina Gander	2004	Andelfingen	BO:08.00 (08.00) / SL:9.40 (00:12.69) / ZW:8.25 (16) / STB:08.70 (08.70)	34.35
89	Lilia Sigg	2004	Andelfingen	BO:08.85 (08.85) / FIT:9.40 (00:35.85) / ZW:7.25 (12) / STB:08.45 (08.45)	33.95
	Sophie Hofer	2004	Räterschen	BO:09.10 (09.10) / FIT:8.65 (00:40.57) / ZW:7.25 (12) / SP:08.95 (08.95)	33.95
91	Julia Weilenmann	2004	Räterschen	BO:08.80 (08.80) / WE:8.70 (3.10) / SL:7.90 (00:14.75) / SP:08.50 (08.50)	33.90
	Seline Reber	2004	Wiesendangen	BO:07.80 (07.80) / KU:9.00 (6.40) / FIT:8.80 (00:39.32) / SP:08.30 (08.30)	33.90
93	Nina Steeg	2003	Hegi	SL:9.40 (00:12.63) / FIT:8.80 (00:39.37) / SS:6.50 (080) / SP:08.80 (08.80)	33.50
94	Livia Wyss	2003	Neftenbach	BO:07.80 (07.80) / SS:8.00 (131) / STB:09.30 (09.30) / SP:07.85 (07.85)	32.95
95	Valérie Koch	2004	Seuzach	BO:09.10 (09.10) / FIT:8.95 (00:38.44) / ZW:7.25 (12) / SP:07.25 (07.25)	32.55
96	Radet Bekele	2003	Andelfingen	BO:07.30 (07.30) / WE:7.70 (2.71) / ZW:7.75 (14) / SS:6.50 (085)	29.25

Allround

C (Mädchen)

Rang	Person	Jg	Verein	Leistungen	Total	
1	Lena Kauflin	2006	Rheinau	STH:10.00 (35) / FIT:10.00 (00:33.91) / SS:10.00 (232) / STB:10.00 (10.00)	40.00	G
2	Gioia Berni	2006	Henggart	BO:09.95 (09.95) / SL:9.70 (00:12.47) / STB:09.85 (09.85) / SP:10.00 (10.00)	39.50	S
3	Julia Kutej	2006	Buch am Irchel	WE:9.90 (3.64) / SL:10.00 (00:11.86) / SS:10.00 (163) / STB:09.50 (09.50)	39.40	B
4	Julia Maurer	2005	Trüllikon	BO:09.70 (09.70) / FIT:10.00 (00:33.50) / SS:10.00 (170) / STB:09.60 (09.60)	39.30	*
	Maja Frauenfelder	2006	Henggart	HW:9.60 (1.10) / WE:10.00 (3.79) / SL:9.70 (00:12.41) / FIT:10.00 (00:32.81)	39.30	*
6	Zoe Bretscher	2006	Henggart	BO:09.80 (09.80) / WE:9.40 (3.43) / STB:10.00 (10.00) / SP:10.00 (10.00)	39.20	*
7	Bigna Sigg	2005	Ossingen	BO:09.60 (09.60) / STH:10.00 (35) / SS:10.00 (188) / STB:09.45 (09.45)	39.05	*
	Emily Spiller	2006	Neftenbach	HW:9.20 (1.05) / WE:10.00 (3.94) / SL:10.00 (00:11.31) / FIT:9.85 (00:34.72)	39.05	*
9	Roja Bosshard	2005	Buch am Irchel	BO:09.60 (09.60) / STH:10.00 (35) / WE:10.00 (3.86) / STB:09.40 (09.40)	39.00	*
	Valeria Leu	2006	Trüllikon	BO:09.75 (09.75) / WE:9.40 (3.41) / FIT:9.85 (00:34.41) / SS:10.00 (183)	39.00	*
11	Jemima von Reitzenstein	2006	Buch am Irchel	STH:10.00 (35) / WE:9.40 (3.40) / SL:9.80 (00:12.37) / FIT:9.70 (00:35.56)	38.90	*
12	Celine Schoch	2005	Räterschen	BO:08.90 (08.90) / WE:10.00 (4.00) / SL:9.90 (00:12.19) / FIT:10.00 (00:32.94)	38.80	*
13	Lenia Lötscher	2006	Stammertal	STH:10.00 (35) / SL:9.80 (00:12.32) / FIT:9.70 (00:35.53) / STB:09.25 (09.25)	38.75	*
14	Jana Schurter	2005	Buch am Irchel	WE:9.40 (3.43) / FIT:9.70 (00:35.68) / SS:10.00 (181) / STB:09.60 (09.60)	38.70	*
	Sofia Starkemann	2005	Henggart	BO:09.60 (09.60) / STH:10.00 (35) / FIT:9.70 (00:35.57) / STB:09.40 (09.40)	38.70	*
16	Maike Blach	2006	Henggart	WE:9.70 (3.55) / SS:9.90 (158) / STB:09.50 (09.50) / SP:09.50 (09.50)	38.60	*
	Liel Stäuber	2006	Henggart	BO:09.45 (09.45) / WE:9.60 (3.47) / FIT:9.85 (00:34.68) / STB:09.70 (09.70)	38.60	*
	Alina Ullrich	2005	Neftenbach	HW:9.60 (1.10) / WE:10.00 (3.81) / SL:9.60 (00:12.62) / FIT:9.40 (00:37.91)	38.60	*
19	Flavia Grab	2006	Andelfingen	BO:09.70 (09.70) / WE:10.00 (3.87) / SL:9.20 (00:13.00) / STB:09.65 (09.65)	38.55	*
20	Julia Bächli	2005	Andelfingen	BO:09.00 (09.00) / FIT:10.00 (00:33.22) / SS:10.00 (195) / STB:09.50 (09.50)	38.50	*
	Lana Barz	2005	Trüllikon	SL:9.90 (00:12.10) / FIT:10.00 (00:32.75) / SS:9.30 (146) / STB:09.30 (09.30)	38.50	*
22	Lena Wagner	2005	Rheinau	BO:08.90 (08.90) / STH:10.00 (35) / SS:10.00 (167) / STB:09.50 (09.50)	38.40	*
23	Larissa Dettwiler	2006	Stammertal	BO:09.45 (09.45) / STH:10.00 (35) / SL:9.00 (00:13.29) / SP:09.90 (09.90)	38.35	*
24	Ursina Schnider	2005	Andelfingen	STH:10.00 (35) / SL:9.60 (00:12.64) / FIT:9.70 (00:35.97) / ZW:9.00 (16)	38.30	*
25	Eline Karrer	2005	Andelfingen	BO:09.70 (09.70) / STH:10.00 (35) / WE:9.40 (3.43) / STB:09.10 (09.10)	38.20	*
	Laurine Schudel	2006	Neftenbach	BO:09.70 (09.70) / WE:10.00 (4.27) / SL:10.00 (00:11.03) / ZW:8.50 (14)	38.20	*
27	Anja Badertscher	2005	Andelfingen	BO:09.65 (09.65) / WE:10.00 (3.72) / SS:9.10 (142) / STB:09.40 (09.40)	38.15	*
28	Soraya Huber	2005	Andelfingen	BO:09.30 (09.30) / FIT:9.70 (00:35.09) / SS:10.00 (164) / STB:09.10 (09.10)	38.10	*
	Livia Aeberhardt	2005	Buch am Irchel	STH:10.00 (35) / WE:9.40 (3.41) / KU:9.50 (6.30) / STB:09.20 (09.20)	38.10	*
30	Sina Lautenschlager	2005	Oberwinterthur	BO:09.70 (09.70) / SS:9.70 (155) / STB:09.60 (09.60) / SP:09.05 (09.05)	38.05	*
31	Laura Hess	2006	Benken	STH:10.00 (35) / WE:10.00 (3.69) / SL:9.00 (00:13.25) / SS:9.00 (140)	38.00	*
32	Jana Meier	2006	Töss	BO:09.40 (09.40) / WE:9.60 (3.49) / SL:9.70 (00:12.46) / FIT:9.25 (00:38.78)	37.95	*
33	Leonie Sherif	2005	Stammertal	BO:09.40 (09.40) / STH:10.00 (35) / ZW:8.75 (15) / SP:09.70 (09.70)	37.85	*
34	Elena Martin	2005	Oberwinterthur	BO:09.70 (09.70) / SL:9.00 (00:13.28) / SS:9.60 (153) / STB:09.50 (09.50)	37.80	*
35	Rahel Stäheli	2006	Stammertal	BO:09.40 (09.40) / STH:10.00 (35) / ZW:9.00 (16) / SP:09.35 (09.35)	37.75	*
	Svenja Landolt	2005	Andelfingen	BO:09.35 (09.35) / WE:9.40 (3.42) / FIT:9.85 (00:34.66) / STB:09.15 (09.15)	37.75	*
	Lisa Schneeberger	2006	Andelfingen	BO:09.40 (09.40) / WE:9.80 (3.63) / SL:9.20 (00:13.00) / STB:09.35 (09.35)	37.75	*
38	Sophia Hochstrasser	2006	Flurlingen	HW:9.20 (1.05) / SL:8.70 (00:13.53) / FIT:10.00 (00:33.50) / ZW:9.75 (19)	37.65	*
39	Tarja Brandenberger	2005	Neftenbach	BO:08.85 (08.85) / WE:9.80 (3.62) / SL:9.10 (00:13.19) / FIT:9.85 (00:34.82)	37.60	*

Rang	Person	Jg	Verein	Leistungen	Total
40	Marina Fürst	2005	Trüllikon	SL:9.60 (00:12.63) / KU:8.70 (5.03) / FIT:9.85 (00:34.03) / STB:09.40 (09.40)	37.55 *
41	Samira Abdelgawwad	2005	Henggart	BO:09.65 (09.65) / HW:8.60 (0.95) / FIT:9.25 (00:38.35) / SP:10.00 (10.00)	37.50 *
	Norah Ramel	2005	Henggart	BO:08.90 (08.90) / WE:10.00 (3.75) / FIT:9.40 (00:37.12) / STB:09.20 (09.20)	37.50 *
	Joelle Eigenheer	2006	Andelfingen	BO:09.55 (09.55) / FIT:9.70 (00:35.19) / ZW:8.75 (15) / STB:09.50 (09.50)	37.50 *
44	Ciara Niedermann	2005	Henggart	SL:9.60 (00:12.62) / FIT:10.00 (00:31.91) / ZW:8.75 (15) / STB:09.10 (09.10)	37.45 *
45	Yekta Rezaei	2005	Buch am Irchel	STH:10.00 (35) / SL:9.20 (00:13.07) / KU:9.10 (5.99) / FIT:9.10 (00:39.81)	37.40 *
46	Celine Ammann	2005	Neftenbach	BO:09.60 (09.60) / SL:8.50 (00:13.78) / FIT:9.70 (00:35.69) / STB:09.50 (09.50)	37.30 *
47	Vanessa Von Känel	2005	Neftenbach	BO:09.25 (09.25) / SL:9.20 (00:13.06) / FIT:9.25 (00:38.22) / STB:09.55 (09.55)	37.25 *
48	Alexa Strasser	2006	Trüllikon	BO:09.50 (09.50) / WE:8.90 (3.12) / ZW:8.75 (15) / SS:10.00 (178)	37.15 *
49	Ida Reutimann	2005	Stammertal	BO:09.10 (09.10) / STH:10.00 (35) / ZW:8.50 (14) / STB:09.40 (09.40)	37.00 *
	Leonie Forster	2006	Stammertal	STH:10.00 (35) / SL:8.80 (00:13.43) / FIT:9.70 (00:35.72) / STB:08.50 (08.50)	37.00 *
	Malin Schulthess	2006	Neftenbach	BO:09.20 (09.20) / HW:8.90 (1.00) / SL:8.90 (00:13.38) / FIT:10.00 (00:33.35)	37.00 *
52	Sara Arnold	2005	Pfungen	STH:10.00 (35) / SL:8.70 (00:13.50) / FIT:8.80 (00:41.03) / STB:09.40 (09.40)	36.90 *
	Daria Wehrli	2005	Buch am Irchel	BO:09.15 (09.15) / STH:10.00 (35) / WE:9.00 (3.20) / SP:08.75 (08.75)	36.90 *
	Shayla Braun	2005	Brütten	HW:9.20 (1.05) / WE:9.60 (3.48) / ZW:8.75 (15) / SP:09.35 (09.35)	36.90 *
55	Elena Föllmi	2006	Andelfingen	BO:09.70 (09.70) / HW:8.90 (1.00) / SL:9.20 (00:13.09) / STB:09.05 (09.05)	36.85 *
56	Zora Hürsch	2006	Trüllikon	SL:8.80 (00:13.47) / FIT:9.55 (00:36.69) / ZW:9.25 (17) / STB:09.20 (09.20)	36.80 *
	Ines Schläpfer	2005	Wiesendangen	BO:09.40 (09.40) / WE:9.30 (3.35) / SL:9.10 (00:13.11) / SP:09.00 (09.00)	36.80 *
58	Natalie Linsi	2006	Buch am Irchel	STH:10.00 (35) / WE:8.70 (3.00) / FIT:9.40 (00:37.84) / SP:08.65 (08.65)	36.75 *
59	Josephine Blum	2005	Andelfingen	HW:8.60 (0.95) / WE:9.40 (3.43) / FIT:9.55 (00:36.06) / STB:09.05 (09.05)	36.60 *
60	Melanie Bless	2005	Neftenbach	BO:08.35 (08.35) / WE:9.60 (3.48) / SL:8.90 (00:13.30) / FIT:9.70 (00:35.53)	36.55 *
	Louisa Yantren	2005	Neftenbach	HW:8.90 (1.00) / WE:10.00 (3.70) / SL:8.90 (00:13.31) / ZW:8.75 (15)	36.55 *
	Michelle Oehler	2005	Wiesendangen	BO:09.20 (09.20) / SL:9.60 (00:12.66) / ZW:8.50 (14) / SP:09.25 (09.25)	36.55 *
63	Emily Amann	2006	Stammertal	BO:09.35 (09.35) / ZW:8.75 (15) / STB:09.40 (09.40) / SP:09.00 (09.00)	36.50 *
	Delia Vogt	2006	Brütten	HW:8.90 (1.00) / WE:9.20 (3.30) / ZW:9.75 (19) / SP:08.65 (08.65)	36.50 *
65	Viviane Galvan	2006	Stammertal	BO:09.20 (09.20) / STH:10.00 (35) / SL:8.40 (00:14.06) / SP:08.85 (08.85)	36.45 *
	Serena Scherrer	2006	Neftenbach	BO:08.35 (08.35) / STH:10.00 (35) / SL:8.70 (00:13.59) / FIT:9.40 (00:37.28)	36.45 *
	Carolina Ramirez-Schipp	2005	Pfungen	WE:9.80 (3.63) / SL:8.50 (00:13.78) / FIT:9.10 (00:39.53) / STB:09.05 (09.05)	36.45 *
68	Julia-Amélie Baur	2005	Pfungen	WE:9.60 (3.50) / SL:8.70 (00:13.56) / FIT:9.10 (00:39.03) / STB:09.00 (09.00)	36.40 *
	Vivien von Ballmoos	2006	Buch am Irchel	BO:09.15 (09.15) / WE:8.70 (2.99) / FIT:9.25 (00:38.90) / STB:09.30 (09.30)	36.40 *
	Farah Fritz	2006	Oberwinterthur	BO:09.30 (09.30) / WE:9.20 (3.30) / FIT:8.65 (00:42.38) / STB:09.25 (09.25)	36.40 *
71	Alenja Seadini	2005	Neftenbach	BO:08.40 (08.40) / SL:9.20 (00:13.01) / FIT:9.55 (00:36.97) / STB:09.20 (09.20)	36.35 *
72	Enya Finsterwalder	2005	Andelfingen	BO:08.95 (08.95) / FIT:9.85 (00:34.50) / SS:8.20 (124) / STB:09.30 (09.30)	36.30 *
	Anouk Sonderegger	2006	Stammertal	STH:10.00 (35) / SL:8.30 (00:14.10) / STB:08.90 (08.90) / SP:09.10 (09.10)	36.30 *
74	Elea Fluri	2006	Henggart	HW:8.60 (0.95) / WE:9.20 (3.32) / FIT:9.25 (00:38.03) / STB:09.20 (09.20)	36.25 *
	Rania Al-Thahiri	2005	Oberwinterthur	BO:09.25 (09.25) / WE:8.60 (2.86) / SS:9.00 (140) / STB:09.40 (09.40)	36.25 *
	Fabienne Kowalski	2006	Henggart	BO:08.30 (08.30) / FIT:8.95 (00:40.50) / STB:09.90 (09.90) / SP:09.10 (09.10)	36.25 *
77	Pasquale Beerli	2005	Hegi	BO:09.15 (09.15) / FIT:9.55 (00:36.65) / ZW:8.75 (15) / STB:08.70 (08.70)	36.15 *
78	Laura Merk	2005	Trüllikon	SL:8.70 (00:13.59) / FIT:9.55 (00:36.75) / SS:8.40 (128) / STB:09.45 (09.45)	36.10 *
	Laura Rebsamen	2005	Oberwinterthur	BO:09.15 (09.15) / ZW:8.75 (15) / STB:09.40 (09.40) / SP:08.80 (08.80)	36.10 *
80	Annika Weber	2005	Brütten	HW:8.60 (0.95) / WE:9.40 (3.39) / ZW:10.00 (20) / SP:08.00 (08.00)	36.00 *

Rang	Person	Jg	Verein	Leistungen	Total
80	Zoé Zysset	2006	Ossingen	BO:09.50 (09.50) / WE:8.90 (3.13) / SL:8.30 (00:14.10) / STB:09.30 (09.30)	36.00 *
	Lena Steeg	2006	Hegi	BO:08.35 (08.35) / WE:9.80 (3.63) / STB:08.70 (08.70) / SP:09.15 (09.15)	36.00 *
	Aleksandra Jankovic	2005	Neftenbach	BO:08.75 (08.75) / FIT:9.25 (00:38.19) / ZW:9.00 (16) / STB:09.00 (09.00)	36.00 *
	Lenya Loinig	2006	Andelfingen	WE:9.10 (3.28) / SL:8.90 (00:13.34) / SS:9.20 (144) / STB:08.80 (08.80)	36.00 *
85	Anshali Sellan	2006	Neftenbach	BO:09.00 (09.00) / SL:8.80 (00:13.41) / FIT:9.55 (00:36.97) / SP:08.55 (08.55)	35.90
	Yara Gyax	2005	Henggart	BO:09.35 (09.35) / SL:8.90 (00:13.35) / FIT:9.40 (00:37.00) / ZW:8.25 (13)	35.90
87	Frida Käller-Cox	2005	Flurlingen	STH:9.80 (34) / SL:8.40 (00:14.05) / ZW:8.75 (15) / SS:8.90 (138)	35.85
	Nele Schulz	2005	Neftenbach	BO:09.00 (09.00) / FIT:9.55 (00:36.78) / SS:9.00 (140) / STB:08.30 (08.30)	35.85
89	Nicole Räss	2005	Andelfingen	BO:09.05 (09.05) / ZW:9.50 (18) / STB:08.10 (08.10) / SP:09.15 (09.15)	35.80
	Pascale Schellmann	2006	Neftenbach	BO:08.60 (08.60) / SL:9.40 (00:12.84) / FIT:8.80 (00:41.65) / ZW:9.00 (16)	35.80
	Soraya Moubarak	2005	Flurlingen	STH:10.00 (35) / SL:8.40 (00:14.03) / ZW:9.50 (18) / SS:7.90 (118)	35.80
	Livia Schmid	2005	Benken	STH:10.00 (35) / SL:8.60 (00:13.66) / KU:8.80 (5.27) / SS:8.40 (128)	35.80
	Seraina Ganster	2006	Hegi	BO:08.40 (08.40) / HW:9.60 (1.10) / WE:8.80 (3.10) / STB:09.00 (09.00)	35.80
	Nanina Käser	2005	Räterschen	BO:09.55 (09.55) / FIT:9.55 (00:36.28) / ZW:8.00 (12) / SP:08.70 (08.70)	35.80
95	Aida Bajo	2006	Rheinau	STH:10.00 (35) / WE:8.00 (2.45) / KU:8.70 (5.06) / STB:09.00 (09.00)	35.70
	Nele Wepfer	2006	Trüllikon	BO:08.70 (08.70) / SL:9.20 (00:13.08) / ZW:8.50 (14) / SS:9.30 (147)	35.70
97	Alisha Sommer	2005	Räterschen	SL:8.50 (00:13.75) / FIT:9.25 (00:38.85) / ZW:9.75 (19) / SP:08.10 (08.10)	35.60
	Noelia Zanetti	2006	Henggart	SL:8.30 (00:14.22) / FIT:9.25 (00:38.09) / STB:09.15 (09.15) / SP:08.90 (08.90)	35.60
	Sina Wyss	2005	Neftenbach	STH:10.00 (35) / WE:8.00 (2.41) / FIT:8.35 (00:44.00) / ZW:9.25 (17)	35.60
100	Elisa Verzino	2005	Henggart	BO:09.35 (09.35) / SL:7.70 (00:15.44) / FIT:9.40 (00:37.57) / STB:09.10 (09.10)	35.55
101	Kayla Rüegg	2006	Brütten	BO:08.70 (08.70) / FIT:9.70 (00:35.90) / SS:8.40 (129) / SP:08.70 (08.70)	35.50
	Nora Schönwitz	2005	Benken	BO:08.50 (08.50) / STH:10.00 (35) / KU:8.50 (4.72) / STB:08.50 (08.50)	35.50
	Leandra Bouvard	2005	Neftenbach	BO:08.55 (08.55) / HW:8.90 (1.00) / SL:8.50 (00:13.75) / FIT:9.55 (00:36.34)	35.50
104	Elea Erzinger	2006	Räterschen	BO:08.80 (08.80) / WE:9.20 (3.32) / SL:8.30 (00:14.28) / SP:09.00 (09.00)	35.30
105	Wüthrich Jeanine	2006	Henggart	BO:08.90 (08.90) / WE:8.60 (2.84) / SL:8.30 (00:14.25) / STB:09.35 (09.35)	35.15
106	Fiona Abegg	2005	Neftenbach	BO:09.20 (09.20) / FIT:9.10 (00:39.06) / ZW:8.25 (13) / SP:08.55 (08.55)	35.10
107	Leonie Züblin	2005	Töss	BO:08.80 (08.80) / WE:9.00 (3.22) / SL:8.50 (00:13.87) / STB:08.70 (08.70)	35.00
	Zilan Dumlu	2006	Hegi	BO:09.00 (09.00) / WE:9.00 (3.22) / SL:8.10 (00:14.69) / STB:08.90 (08.90)	35.00
109	Ladina Bürgis	2006	Hegi	BO:08.55 (08.55) / FIT:8.80 (00:41.53) / STB:09.00 (09.00) / SP:08.60 (08.60)	34.95
	Sarina Baumann	2006	Neftenbach	BO:08.80 (08.80) / SL:9.00 (00:13.24) / ZW:8.50 (14) / SP:08.65 (08.65)	34.95
111	Lana-Joy Rexha	2006	Räterschen	BO:08.60 (08.60) / SL:8.10 (00:14.53) / FIT:8.95 (00:40.85) / ZW:9.25 (17)	34.90
	Valeria Velasco	2006	Räterschen	WE:9.40 (3.39) / SL:8.20 (00:14.44) / FIT:9.55 (00:36.25) / SP:07.75 (07.75)	34.90
	Karuna Gurung	2006	Henggart	WE:8.30 (2.68) / FIT:9.25 (00:38.43) / ZW:8.75 (15) / SP:08.60 (08.60)	34.90
114	Sarah Olijnyk	2005	Flurlingen	HW:8.00 (0.85) / WE:9.00 (3.23) / FIT:8.65 (00:42.31) / SS:9.20 (144)	34.85
	Aline Ludwig	2005	Wiesendangen	BO:09.45 (09.45) / SL:8.00 (00:14.78) / FIT:9.25 (00:38.60) / SP:08.15 (08.15)	34.85
116	Anna-Lena Schäfer	2006	Flurlingen	HW:8.60 (0.95) / SL:8.40 (00:14.03) / FIT:9.10 (00:39.88) / SS:8.70 (134)	34.80
	Luana Nikolic	2005	Hegi	BO:09.20 (09.20) / SS:8.30 (127) / STB:08.90 (08.90) / SP:08.40 (08.40)	34.80
	Alexandra Kiene	2005	Oberwinterthur	HW:8.30 (0.90) / SL:7.90 (00:14.94) / ZW:9.00 (16) / STB:09.60 (09.60)	34.80
	Jamie Bisang	2006	Neftenbach	BO:08.85 (08.85) / SL:8.40 (00:13.91) / ZW:8.75 (15) / SP:08.80 (08.80)	34.80
	Sabine Holenstein	2006	Neftenbach	BO:09.45 (09.45) / SL:8.40 (00:13.96) / ZW:8.75 (15) / SS:8.20 (124)	34.80
121	Nicole Lanz	2006	Brütten	HW:8.00 (0.85) / WE:9.00 (3.19) / ZW:8.75 (15) / SP:09.00 (09.00)	34.75

Rang	Person	Jg	Verein	Leistungen	Total
121	Anna Nell	2006	Neftenbach	BO:09.00 (09.00) / SL:8.40 (00:14.00) / FIT:9.10 (00:39.40) / ZW:8.25 (13)	34.75
123	Yasmin Horisberger	2006	Neftenbach	BO:08.35 (08.35) / WE:9.00 (3.20) / FIT:9.40 (00:37.75) / SP:07.95 (07.95)	34.70
	Gresa Hasani	2006	Oberwinterthur	BO:08.95 (08.95) / FIT:8.95 (00:40.81) / STB:08.80 (08.80) / SP:08.00 (08.00)	34.70
	Lara Palumbo	2006	Flurlingen	STH:10.00 (35) / SL:7.30 (00:16.10) / FIT:8.80 (00:41.78) / SS:8.60 (132)	34.70
126	Joline Baier	2006	Hegi	BO:09.10 (09.10) / ZW:8.75 (15) / STB:08.70 (08.70) / SP:08.10 (08.10)	34.65
	Melanie Huwiler	2005	Neftenbach	BO:08.55 (08.55) / WE:9.10 (3.25) / SL:8.50 (00:13.81) / FIT:8.50 (00:43.94)	34.65
	Sarina Miling	2005	Neftenbach	BO:08.40 (08.40) / SL:8.70 (00:13.57) / FIT:9.25 (00:38.34) / STB:08.30 (08.30)	34.65
129	Juliette Fischli	2006	Benken	BO:08.40 (08.40) / STH:10.00 (35) / SL:7.90 (00:14.94) / STB:08.30 (08.30)	34.60
130	Jasmin Allmann	2006	Räterschen	BO:08.85 (08.85) / WE:8.70 (3.00) / SL:8.20 (00:14.38) / FIT:8.80 (00:41.84)	34.55
	Sophie Fischer	2006	Andelfingen	BO:08.30 (08.30) / WE:8.90 (3.11) / SL:8.20 (00:14.41) / STB:09.15 (09.15)	34.55
132	Anisha Sellan	2005	Neftenbach	BO:08.85 (08.85) / WE:8.90 (3.16) / FIT:9.25 (00:38.47) / ZW:7.50 (10)	34.50
	Kim Bühler	2005	Andelfingen	BO:08.80 (08.80) / WE:9.20 (3.32) / SS:7.10 (102) / STB:09.40 (09.40)	34.50
134	Laura De Simone	2006	Andelfingen	BO:08.50 (08.50) / WE:8.30 (2.68) / ZW:8.75 (15) / STB:08.90 (08.90)	34.45
135	Chiara Kreder	2006	Brütten	BO:08.60 (08.60) / FIT:9.70 (00:35.19) / ZW:8.50 (14) / SP:07.60 (07.60)	34.40
136	Sara Huss	2006	Wiesendangen	BO:09.00 (09.00) / WE:8.40 (2.75) / SL:8.70 (00:13.59) / ZW:8.25 (13)	34.35
137	Sarah Wittwer	2006	Flurlingen	HW:7.70 (0.80) / SL:8.30 (00:14.25) / FIT:9.55 (00:36.87) / ZW:8.75 (15)	34.30
	Ariana Aventaggiato	2006	Neftenbach	BO:09.00 (09.00) / WE:8.20 (2.60) / SL:8.60 (00:13.64) / ZW:8.50 (14)	34.30
	Jeanine Hönes	2006	Andelfingen	BO:08.00 (08.00) / WE:9.00 (3.23) / STB:08.70 (08.70) / SP:08.60 (08.60)	34.30
140	Elina Schifferle	2006	Pfungen	SL:8.90 (00:13.32) / FIT:8.80 (00:41.06) / SS:8.00 (120) / STB:08.55 (08.55)	34.25
141	Sophie Stegemann	2005	Andelfingen	BO:09.20 (09.20) / WE:8.90 (3.15) / SS:7.20 (105) / STB:08.90 (08.90)	34.20
	Joyce Rohner	2006	Ossingen	BO:09.25 (09.25) / WE:8.60 (2.90) / SS:7.30 (106) / STB:09.05 (09.05)	34.20
143	Maria Aeschimann	2006	Andelfingen	BO:08.60 (08.60) / FIT:9.10 (00:39.54) / SS:7.90 (118) / STB:08.55 (08.55)	34.15
144	Delia Cappilli	2006	Neftenbach	BO:08.40 (08.40) / SL:8.90 (00:13.38) / FIT:8.95 (00:40.46) / SP:07.85 (07.85)	34.10
145	Patricia Koblet	2006	Räterschen	BO:09.00 (09.00) / WE:8.10 (2.51) / SL:7.70 (00:15.41) / SP:09.25 (09.25)	34.05
	Samira Schmid	2006	Räterschen	BO:07.90 (07.90) / WE:8.80 (3.09) / SL:8.10 (00:14.63) / FIT:9.25 (00:38.13)	34.05
147	Anika Rüttimann	2005	Stammertal	BO:09.00 (09.00) / STH:7.60 (23) / ZW:8.25 (13) / SP:09.15 (09.15)	34.00
	Nora Graber	2005	Hegi	BO:09.00 (09.00) / WE:8.30 (2.64) / STB:08.50 (08.50) / SP:08.20 (08.20)	34.00
	Serena Pierinelli	2006	Flurlingen	STH:9.00 (30) / SL:7.90 (00:15.00) / ZW:9.00 (16) / SS:8.10 (122)	34.00
150	Julia Meier	2006	Flurlingen	HW:7.40 (0.75) / SL:8.20 (00:14.43) / FIT:9.55 (00:36.37) / ZW:8.75 (15)	33.90
151	Xenia Bolli	2006	Flurlingen	STH:8.00 (25) / WE:8.60 (2.84) / FIT:8.95 (00:40.97) / ZW:8.25 (13)	33.80
152	Alisa Rahmani	2006	Rheinau	BO:07.90 (07.90) / STH:10.00 (35) / FIT:7.60 (00:49.00) / STB:08.20 (08.20)	33.70
	Ilenia Vezzu	2006	Pfungen	SL:8.30 (00:14.28) / FIT:9.10 (00:39.78) / SS:7.40 (108) / STB:08.90 (08.90)	33.70
154	Gioia Wegmann	2006	Benken	BO:07.95 (07.95) / STH:10.00 (35) / SL:7.60 (00:15.63) / STB:08.10 (08.10)	33.65
155	Lara Willborn	2005	Hegi	BO:08.40 (08.40) / FIT:9.10 (00:39.25) / STB:08.40 (08.40) / SP:07.70 (07.70)	33.60
156	Beatriz Ferraira	2005	Benken	STH:10.00 (35) / WE:8.10 (2.51) / KU:8.90 (5.53) / SS:6.50 (089)	33.50
157	Lena Froschauer	2006	Rickenbach	BO:08.30 (08.30) / KU:8.20 (4.12) / FIT:8.50 (00:43.15) / STB:08.40 (08.40)	33.40
	Anissa Schneider	2006	Wiesendangen	BO:08.70 (08.70) / SL:7.90 (00:15.06) / FIT:8.95 (00:40.56) / SP:07.85 (07.85)	33.40
	Soena Sturzenegger	2006	Oberwinterthur	BO:08.60 (08.60) / ZW:8.00 (12) / STB:08.50 (08.50) / SP:08.30 (08.30)	33.40
160	Cleo Hofer	2006	Räterschen	BO:08.60 (08.60) / SL:7.70 (00:15.40) / FIT:8.50 (00:43.94) / ZW:8.50 (14)	33.30
	Sarah Bilkanovic	2006	Oberwinterthur	BO:08.75 (08.75) / HW:7.70 (0.80) / ZW:8.25 (13) / STB:08.60 (08.60)	33.30
162	Marie Ganz	2006	Andelfingen	BO:08.60 (08.60) / SL:7.30 (00:16.12) / FIT:8.50 (00:43.47) / STB:08.80 (08.80)	33.20

Rang	Person	Jg	Verein	Leistungen	Total
162	Jael Rutschmann	2006	Räterschen	BO:09.00 (09.00) / WE:8.20 (2.58) / SL:7.80 (00:15.15) / SP:08.20 (08.20)	33.20
164	Alina Strasser	2005	Benken	BO:08.15 (08.15) / STH:10.00 (35) / SS:6.70 (095) / STB:08.30 (08.30)	33.15
	Kayla Donno	2006	Pfungen	SL:8.60 (00:13.63) / FIT:9.25 (00:38.16) / SS:6.70 (094) / STB:08.60 (08.60)	33.15
166	Sarah Bauer	2006	Oberwinterthur	BO:08.95 (08.95) / FIT:8.95 (00:40.78) / SS:6.50 (081) / STB:08.70 (08.70)	33.10
167	Sarah Müller	2006	Rickenbach	SL:6.50 (00:19.84) / FIT:9.40 (00:37.94) / ZW:8.75 (15) / STB:08.40 (08.40)	33.05
	Emilia Muñoz-Toledo	2005	Neftenbach	HW:7.70 (0.80) / WE:8.70 (2.98) / SL:8.40 (00:14.08) / ZW:8.25 (13)	33.05
169	Melina Neining	2006	Räterschen	BO:08.50 (08.50) / SL:7.10 (00:16.56) / FIT:8.65 (00:42.13) / ZW:8.75 (15)	33.00
170	Luana D'Arsié	2006	Brütten	SL:7.90 (00:14.91) / FIT:9.25 (00:38.71) / SS:8.80 (136) / SP:07.00 (07.00)	32.95
	Inola Stutz	2006	Oberwinterthur	BO:08.50 (08.50) / ZW:7.75 (11) / STB:08.70 (08.70) / SP:08.00 (08.00)	32.95
	Melanie Güntensperger	2006	Neftenbach	BO:08.35 (08.35) / STH:7.00 (20) / SL:8.50 (00:13.78) / FIT:9.10 (00:39.32)	32.95
173	Svena Rüegg	2006	Brütten	SL:8.30 (00:14.22) / FIT:9.40 (00:37.56) / SS:8.20 (125) / SP:07.00 (07.00)	32.90
	Giulia Guadagnin	2006	Räterschen	BO:08.15 (08.15) / SL:7.20 (00:16.34) / FIT:8.80 (00:41.53) / ZW:8.75 (15)	32.90
175	Jasmin Wäfler	2006	Räterschen	BO:08.75 (08.75) / WE:8.40 (2.74) / SL:7.70 (00:15.40) / SP:08.00 (08.00)	32.85
176	Tina Castelberg	2005	Räterschen	BO:08.55 (08.55) / SL:7.70 (00:15.30) / FIT:8.80 (00:41.18) / ZW:7.75 (11)	32.80
177	Sara Mirzai	2006	Wiesendangen	BO:08.90 (08.90) / WE:8.10 (2.51) / SL:8.00 (00:14.78) / SP:07.65 (07.65)	32.65
	Luna Petrovic	2006	Neftenbach	BO:07.20 (07.20) / WE:8.60 (2.81) / FIT:8.65 (00:42.22) / SS:8.20 (124)	32.65
179	Flavia Zweifel	2006	Oberwinterthur	SL:8.10 (00:14.59) / FIT:8.35 (00:44.78) / SS:7.60 (112) / STB:08.55 (08.55)	32.60
180	Céline Dürsteler	2005	Brütten	HW:8.00 (0.85) / WE:9.40 (3.40) / ZW:7.00 (08) / SP:08.10 (08.10)	32.50
181	Liana Toma	2005	Pfungen	WE:8.40 (2.77) / FIT:9.10 (00:39.50) / SS:6.60 (092) / STB:07.90 (07.90)	32.00
182	Selina Olijnyk	2005	Flurlingen	HW:7.70 (0.80) / WE:8.70 (2.99) / FIT:8.95 (00:40.22) / SS:6.50 (089)	31.85
183	Lara Bilang	2006	Brütten	BO:08.40 (08.40) / FIT:8.80 (00:41.97) / SS:6.50 (075) / SP:07.85 (07.85)	31.55
184	Kaira Stuker	2006	Oberwinterthur	BO:07.00 (07.00) / WE:8.00 (2.43) / SS:8.70 (134) / STB:07.80 (07.80)	31.50
185	Julia Scherrer	2006	Oberwinterthur	BO:08.45 (08.45) / SL:8.50 (00:13.87) / SS:6.60 (092) / STB:07.80 (07.80)	31.35
	Lorena Vijayanathan	2006	Rickenbach	BO:07.40 (07.40) / FIT:8.65 (00:42.91) / ZW:8.00 (12) / STB:07.30 (07.30)	31.35
187	Catriona Miller	2006	Neftenbach	HW:6.50 (0.00) / SL:9.90 (00:12.06) / FIT:8.35 (00:44.56) / SS:6.50 (089)	31.25
188	Medina Hetemi	2006	Pfungen	SL:7.60 (00:15.53) / FIT:8.20 (00:45.69) / ZW:8.25 (13) / SP:06.95 (06.95)	31.00
189	Samira Büchli	2006	Brütten	BO:08.10 (08.10) / FIT:8.65 (00:42.16) / SS:6.50 (073) / SP:07.50 (07.50)	30.75
190	Theebiiha Thivaharan	2005	Pfungen	HW:7.70 (0.80) / FIT:7.75 (00:48.66) / SS:6.50 (072) / STB:08.45 (08.45)	30.40
191	Noemi Baumann	2006	Pfungen	SL:6.80 (00:17.16) / FIT:8.50 (00:43.35) / SS:6.50 (081) / STB:08.50 (08.50)	30.30
192	Rahel Pfaffhauser	2006	Andelfingen	BO:08.30 (08.30) / ZW:7.25 (09) / SS:6.50 (073) / STB:08.20 (08.20)	30.25
193	Ayleen Bollhalder	2006	Oberwinterthur	BO:07.90 (07.90) / ZW:8.00 (12) / SS:6.50 (081) / STB:07.70 (07.70)	30.10
194	Julia Jegher	2006	Brütten	BO:07.80 (07.80) / FIT:7.30 (00:51.57) / ZW:7.75 (11) / SP:07.00 (07.00)	29.85
195	Annika Zehnder	2005	Räterschen	BO:06.80 (06.80) / SL:8.10 (00:14.69) / FIT:7.60 (00:49.96) / ZW:7.25 (09)	29.75
196	Abinaga Yogeswaran	2006	Pfungen	SL:7.00 (00:16.72) / FIT:7.60 (00:49.00) / SS:6.50 (080) / STB:08.40 (08.40)	29.50
197	Alexandra Winkler	2006	Henggart	HW:7.40 (0.75) / WE:7.80 (2.29) / SL:7.50 (00:15.87) / SS:6.50 (078)	29.20
198	Ronja Rüegg	2005	Töss	BO:08.15 (08.15) / WE:7.60 (2.12) / SL:6.50 (00:17.81) / FIT:6.70 (00:55.91)	28.95
199	Lia Spahn	2006	Andelfingen	BO:06.85 (06.85) / SL:7.80 (00:15.25) / ZW:7.25 (09) / SS:6.90 (098)	28.80
200	Ashu Cauzzi	2006	Rickenbach	BO:07.90 (07.90) / HW:6.80 (0.65) / SL:6.50 (00:24.76) / STB:06.90 (06.90)	28.10

Allround

D (Mädchen)

Rang	Person	Jg	Verein	Leistungen	Total
1	Anna Gürtler	2007	Trüllikon	STH:10.00 (35) / WE:9.90 (3.38) / SL:9.70 (00:10.09) / SS:10.00 (165)	39.60 G
2	Leila Minder	2007	Neftenbach	BO:09.80 (09.80) / HW:9.60 (0.95) / FIT:10.00 (00:35.07) / SP:09.90 (09.90)	39.30 S
3	Alena Venturini	2007	Neftenbach	BO:09.60 (09.60) / HW:9.60 (0.95) / FIT:10.00 (00:33.03) / SP:09.90 (09.90)	39.10 B
4	Simea von Reitzenstein	2008	Buch am Irchel	BO:09.60 (09.60) / WE:9.60 (3.25) / STB:09.80 (09.80) / SP:10.00 (10.00)	39.00 *
5	Lorena Lang	2007	Flurlingen	STH:10.00 (35) / HW:9.60 (0.95) / SL:9.50 (00:10.41) / FIT:9.85 (00:36.44)	38.95 *
6	Amy Gierens	2007	Rheinau	BO:09.45 (09.45) / STH:10.00 (35) / SS:10.00 (145) / STB:09.40 (09.40)	38.85 *
7	Emily Schmid	2007	Rheinau	BO:09.60 (09.60) / SL:9.50 (00:10.50) / FIT:10.00 (00:34.94) / STB:09.70 (09.70)	38.80 *
8	Alina Arnold	2007	Räterschen	BO:09.50 (09.50) / SL:9.70 (00:10.11) / FIT:9.70 (00:37.31) / ZW:9.75 (17)	38.65 *
9	Selina Malgo	2007	Brütten	SL:10.00 (00:09.59) / FIT:9.70 (00:37.00) / SS:10.00 (140) / SP:08.90 (08.90)	38.60 *
10	Emilia Pellizzari	2007	Henggart	BO:09.65 (09.65) / FIT:9.10 (00:41.10) / STB:09.80 (09.80) / SP:10.00 (10.00)	38.55 *
11	Shania Keller	2008	Stammertal	BO:09.60 (09.60) / STH:10.00 (35) / FIT:9.55 (00:38.03) / SP:09.30 (09.30)	38.45 *
	Gianna Müller	2008	Stammertal	BO:09.60 (09.60) / STH:10.00 (35) / ZW:9.25 (15) / SP:09.60 (09.60)	38.45 *
13	Lena Greminger	2007	Stammertal	BO:09.40 (09.40) / STH:10.00 (35) / FIT:9.40 (00:39.75) / SP:09.60 (09.60)	38.40 *
	Elynn Stalder	2007	Ossingen	BO:09.40 (09.40) / SL:9.90 (00:09.69) / FIT:10.00 (00:35.35) / STB:09.10 (09.10)	38.40 *
15	Nuria Sposato	2007	Rickenbach	HW:9.60 (0.95) / SL:9.80 (00:09.94) / ZW:9.50 (16) / STB:09.35 (09.35)	38.25 *
16	Elin Keller	2008	Stammertal	BO:09.25 (09.25) / STH:10.00 (35) / SL:9.10 (00:11.25) / SP:09.85 (09.85)	38.20 *
	Angelina Naef	2007	Buch am Irchel	STH:10.00 (35) / HW:9.20 (0.90) / SL:9.70 (00:10.13) / STB:09.30 (09.30)	38.20 *
18	Alissa Wagner	2007	Rheinau	STH:10.00 (35) / SL:9.30 (00:10.90) / FIT:9.55 (00:38.87) / STB:09.20 (09.20)	38.05 *
19	Emilie Onnen	2007	Flurlingen	HW:9.20 (0.90) / SL:9.30 (00:10.85) / FIT:9.70 (00:37.47) / ZW:9.75 (17)	37.95 *
	Alizee Staub	2007	Benken	BO:09.15 (09.15) / STH:10.00 (35) / SL:9.80 (00:09.91) / STB:09.00 (09.00)	37.95 *
21	Laura Greminger	2007	Stammertal	BO:09.20 (09.20) / STH:10.00 (35) / FIT:9.40 (00:39.16) / SP:09.25 (09.25)	37.85 *
	Anna Hiestand	2007	Neftenbach	BO:09.30 (09.30) / HW:9.20 (0.90) / FIT:10.00 (00:34.35) / SP:09.35 (09.35)	37.85 *
23	Leana Saxer	2008	Neftenbach	BO:08.95 (08.95) / SL:9.60 (00:10.37) / FIT:9.85 (00:36.60) / SP:09.40 (09.40)	37.80 *
	Fabienne Zech	2007	Neftenbach	BO:08.90 (08.90) / HW:10.00 (1.00) / ZW:9.50 (16) / SP:09.40 (09.40)	37.80 *
	Nora Heer	2008	Pfungen	SL:9.60 (00:10.31) / FIT:9.70 (00:37.44) / ZW:9.50 (16) / SP:09.00 (09.00)	37.80 *
26	Selina Keller	2007	Stammertal	HW:10.00 (1.00) / SL:9.50 (00:10.47) / FIT:8.95 (00:42.22) / SP:09.25 (09.25)	37.70 *
	Laura Biscioni	2007	Rickenbach	BO:09.55 (09.55) / SL:9.80 (00:09.97) / ZW:9.25 (15) / STB:09.10 (09.10)	37.70 *
28	Nina Dimmeler	2007	Neftenbach	BO:08.90 (08.90) / HW:9.60 (0.95) / FIT:9.55 (00:38.06) / SP:09.60 (09.60)	37.65 *
29	Sophia Naef	2007	Buch am Irchel	SL:9.60 (00:10.31) / FIT:9.25 (00:40.50) / STB:09.20 (09.20) / SP:09.55 (09.55)	37.60 *
	Lennie Stimpson	2008	Stammertal	BO:09.70 (09.70) / HW:8.90 (0.85) / ZW:9.50 (16) / SP:09.50 (09.50)	37.60 *
	Sophie Ziegler	2008	Hegi	BO:08.80 (08.80) / HW:10.00 (1.00) / WE:9.20 (3.06) / SP:09.60 (09.60)	37.60 *
32	Elena Reyes	2008	Räterschen	BO:09.60 (09.60) / SL:9.70 (00:10.06) / FIT:9.25 (00:40.16) / ZW:9.00 (14)	37.55 *
33	Viola Falcucci	2007	Rickenbach	BO:09.00 (09.00) / WE:9.60 (3.22) / KU:9.70 (5.01) / STB:09.20 (09.20)	37.50 *
34	Lara Bugeda	2007	Wiesendangen	BO:09.20 (09.20) / SL:9.40 (00:10.63) / FIT:9.70 (00:37.91) / SP:09.15 (09.15)	37.45 *
35	Loriana Ulrich	2007	Benken	BO:08.90 (08.90) / STH:10.00 (35) / SS:10.00 (158) / STB:08.50 (08.50)	37.40 *
36	Mona Hochstrasser	2008	Flurlingen	HW:8.90 (0.85) / SL:9.40 (00:10.75) / FIT:10.00 (00:35.84) / ZW:9.00 (14)	37.30 *
	Lena Degiorgi	2008	Oberwinterthur	BO:09.40 (09.40) / SL:8.70 (00:11.69) / SS:9.90 (138) / STB:09.30 (09.30)	37.30 *
38	Alisha Zech	2007	Neftenbach	BO:08.70 (08.70) / SL:8.90 (00:11.40) / SS:9.80 (137) / SP:09.80 (09.80)	37.20 *
	Aregger Kim	2008	Benken	STH:10.00 (35) / SL:9.60 (00:10.28) / FIT:9.10 (00:41.00) / STB:08.50 (08.50)	37.20 *

Rang	Person	Jg	Verein	Leistungen	Total
38	Nishani Westermann	2008	Buch am Irchel	BO:08.95 (08.95) / FIT:9.55 (00:38.85) / SS:9.30 (127) / STB:09.40 (09.40)	37.20 *
	Seraina Sieber	2008	Flurlingen	HW:8.30 (0.75) / SL:9.20 (00:11.15) / FIT:10.00 (00:35.41) / SS:9.70 (134)	37.20 *
	Simona Ritter	2008	Rheinau	BO:08.70 (08.70) / FIT:9.40 (00:39.06) / STB:09.10 (09.10) / SP:10.00 (10.00)	37.20 *
	Iris Banyard	2007	Rheinau	BO:09.30 (09.30) / HW:8.60 (0.80) / SS:9.90 (138) / STB:09.40 (09.40)	37.20 *
44	Nora Frei	2008	Buch am Irchel	BO:09.25 (09.25) / FIT:9.40 (00:39.72) / STB:09.50 (09.50) / SP:09.00 (09.00)	37.15 *
45	Lara Schmid	2007	Räterschen	BO:09.20 (09.20) / FIT:9.70 (00:37.21) / ZW:8.50 (12) / SP:09.60 (09.60)	37.00 *
46	Alina Zimmermann	2007	Ossingen	BO:09.05 (09.05) / SL:9.50 (00:10.44) / FIT:9.40 (00:39.78) / STB:09.00 (09.00)	36.95 *
	Lena Ruf	2007	Neftenbach	BO:09.00 (09.00) / HW:9.20 (0.90) / SL:9.60 (00:10.31) / SP:09.15 (09.15)	36.95 *
48	Mia Gutknecht	2007	Neftenbach	BO:08.80 (08.80) / SL:9.40 (00:10.72) / FIT:9.40 (00:39.00) / SP:09.30 (09.30)	36.90 *
	Leonie Von Niederhäusern	2008	Wiesendangen	BO:09.30 (09.30) / WE:8.70 (2.70) / FIT:9.40 (00:39.15) / SP:09.50 (09.50)	36.90 *
	Alma Schläpfer	2007	Wiesendangen	BO:09.10 (09.10) / SL:9.40 (00:10.78) / STB:09.30 (09.30) / SP:09.10 (09.10)	36.90 *
	Evangelina Schiller	2007	Brütten	BO:08.75 (08.75) / FIT:9.55 (00:38.25) / SS:9.30 (127) / SP:09.30 (09.30)	36.90 *
52	Siria Videa	2008	Räterschen	BO:08.85 (08.85) / SL:9.30 (00:10.91) / FIT:9.70 (00:37.09) / ZW:9.00 (14)	36.85 *
53	Jannic Ludwig	2007	Wiesendangen	BO:08.80 (08.80) / SL:8.90 (00:11.41) / FIT:9.55 (00:38.97) / STB:09.55 (09.55)	36.80 *
	Demi Di Furio	2007	Stammertal	SL:9.50 (00:10.41) / FIT:9.70 (00:37.87) / SS:8.60 (113) / STB:09.00 (09.00)	36.80 *
	Sophia Hiestand	2007	Neftenbach	BO:08.75 (08.75) / HW:9.20 (0.90) / FIT:9.55 (00:38.28) / SP:09.30 (09.30)	36.80 *
56	Kira Thoma	2008	Hegi	BO:09.10 (09.10) / WE:9.00 (2.97) / FIT:9.25 (00:40.97) / SP:09.40 (09.40)	36.75 *
	Dina Abdelgawwad	2007	Henggart	BO:09.35 (09.35) / SL:9.00 (00:11.31) / STB:08.50 (08.50) / SP:09.90 (09.90)	36.75 *
58	Leeloo Walther	2007	Ossingen	WE:9.30 (3.10) / SL:9.50 (00:10.44) / SS:9.20 (124) / STB:08.70 (08.70)	36.70 *
59	Fabiola Garcia	2008	Rickenbach	BO:09.70 (09.70) / HW:8.90 (0.85) / ZW:8.75 (13) / STB:09.30 (09.30)	36.65 *
60	Finja Hediger	2007	Wiesendangen	BO:08.50 (08.50) / SL:9.40 (00:10.78) / FIT:9.40 (00:39.81) / SP:09.30 (09.30)	36.60 *
	Nathalie Fässler	2007	Räterschen	BO:09.50 (09.50) / FIT:9.70 (00:37.25) / ZW:8.00 (10) / SP:09.40 (09.40)	36.60 *
62	Noemi Gutknecht	2008	Stammertal	BO:08.70 (08.70) / STH:10.00 (35) / ZW:8.75 (13) / SP:09.10 (09.10)	36.55 *
63	Aina Simeon	2007	Hegi	BO:08.70 (08.70) / FIT:9.10 (00:41.66) / STB:09.40 (09.40) / SP:09.25 (09.25)	36.45 *
	Fiona Wittwer	2008	Flurlingen	STH:10.00 (35) / SL:9.10 (00:11.22) / FIT:9.10 (00:41.84) / ZW:8.25 (11)	36.45 *
	Josephine Rüedi	2007	Rheinau	STH:10.00 (35) / KU:9.00 (3.66) / FIT:8.95 (00:42.75) / STB:08.50 (08.50)	36.45 *
	Sienna Vobornik	2007	Ossingen	BO:09.75 (09.75) / WE:8.90 (2.87) / ZW:8.75 (13) / STB:09.05 (09.05)	36.45 *
	Sara Ullrich	2007	Neftenbach	BO:08.75 (08.75) / HW:8.90 (0.85) / FIT:9.85 (00:36.43) / SP:08.95 (08.95)	36.45 *
68	Sophia Hofmeier	2007	Neftenbach	BO:08.45 (08.45) / SL:9.40 (00:10.78) / FIT:9.55 (00:38.31) / SP:09.00 (09.00)	36.40 *
	Talina Anna Frei	2008	Räterschen	BO:09.00 (09.00) / SL:8.60 (00:11.72) / FIT:9.55 (00:38.44) / ZW:9.25 (15)	36.40 *
70	Enya Eberhart	2007	Flurlingen	HW:9.20 (0.90) / SL:9.80 (00:09.94) / FIT:10.00 (00:35.42) / SS:7.30 (086)	36.30 *
71	Nebu Kifle	2008	Räterschen	BO:09.10 (09.10) / SL:9.30 (00:10.87) / FIT:9.10 (00:41.78) / ZW:8.75 (13)	36.25 *
72	Leticia Messmer	2007	Andelfingen	BO:08.75 (08.75) / SL:9.30 (00:10.97) / FIT:9.70 (00:37.34) / SS:8.40 (109)	36.15 *
	Rana Abdou	2007	Töss	BO:09.00 (09.00) / WE:9.30 (3.12) / SL:9.20 (00:11.03) / FIT:8.65 (00:44.69)	36.15 *
74	Alina Gärtner	2008	Pfungen	SL:9.30 (00:10.94) / FIT:9.40 (00:39.19) / SS:7.70 (094) / SP:09.70 (09.70)	36.10 *
	Sophia Bütikofer	2008	Räterschen	BO:09.00 (09.00) / SL:9.00 (00:11.38) / FIT:9.10 (00:41.56) / ZW:9.00 (14)	36.10 *
	Mia Steiner	2007	Stammertal	BO:09.05 (09.05) / ZW:8.25 (11) / STB:09.40 (09.40) / SP:09.40 (09.40)	36.10 *
77	Chenoa Burkhard	2008	Stammertal	BO:08.60 (08.60) / ZW:8.50 (12) / STB:09.45 (09.45) / SP:09.50 (09.50)	36.05 *
	Alessia Bachmair	2008	Wiesendangen	BO:09.20 (09.20) / WE:8.20 (2.36) / FIT:9.10 (00:41.46) / SP:09.55 (09.55)	36.05 *
	Anna Fuchs	2008	Wiesendangen	BO:09.35 (09.35) / WE:8.40 (2.47) / FIT:9.10 (00:41.03) / SP:09.20 (09.20)	36.05 *
	Veera Osswald	2008	Brütten	BO:08.40 (08.40) / FIT:8.80 (00:43.62) / ZW:9.25 (15) / SP:09.60 (09.60)	36.05 *

Rang	Person	Jg	Verein	Leistungen	Total
81	Fiona Eggenberger	2007	Henggart	HW:8.60 (0.80) / WE:8.70 (2.74) / SL:9.00 (00:11.32) / SP:09.70 (09.70)	36.00 *
82	Erin Pletscher	2007	Rheinau	STH:10.00 (35) / KU:9.20 (4.00) / ZW:8.25 (11) / SP:08.50 (08.50)	35.95 *
	Damaris Gyger	2008	Hegi	HW:8.60 (0.80) / FIT:9.25 (00:40.19) / ZW:9.00 (14) / STB:09.10 (09.10)	35.95 *
	Sarina Guggel	2008	Neftenbach	HW:9.20 (0.90) / SL:9.50 (00:10.52) / FIT:9.25 (00:40.03) / ZW:8.00 (10)	35.95 *
	Dunia Anders	2008	Flurlingen	HW:8.60 (0.80) / SL:9.00 (00:11.31) / FIT:9.55 (00:38.41) / SS:8.80 (117)	35.95 *
	Alea Lauterburg	2007	Neftenbach	BO:09.00 (09.00) / SL:8.40 (00:12.10) / FIT:9.55 (00:38.90) / ZW:9.00 (14)	35.95 *
87	Yella Holzweiss	2007	Pfungen	SL:9.60 (00:10.21) / FIT:8.95 (00:42.97) / SS:7.70 (095) / SP:09.60 (09.60)	35.85 *
88	Alsha Tadesse	2008	Henggart	BO:08.95 (08.95) / FIT:8.95 (00:42.50) / ZW:8.25 (11) / SP:09.65 (09.65)	35.80 *
89	Charlotte Hoppach	2007	Oberwinterthur	BO:08.75 (08.75) / SL:8.80 (00:11.59) / FIT:9.40 (00:39.66) / STB:08.75 (08.75)	35.70 *
	Marie Weyn	2007	Oberwinterthur	BO:08.70 (08.70) / SL:9.20 (00:11.15) / SS:8.50 (110) / STB:09.30 (09.30)	35.70 *
	Jana Meier	2007	Andelfingen	BO:08.80 (08.80) / WE:9.30 (3.08) / SL:9.60 (00:10.35) / SS:8.00 (100)	35.70 *
92	Lisa Widmer	2007	Töss	BO:08.60 (08.60) / WE:8.60 (2.64) / SL:9.20 (00:11.09) / FIT:9.25 (00:40.91)	35.65
	Nina Raschle	2008	Räterschen	BO:08.90 (08.90) / SL:8.60 (00:11.71) / FIT:9.40 (00:39.63) / ZW:8.75 (13)	35.65
	Maren Graber	2007	Hegi	BO:09.10 (09.10) / WE:8.80 (2.84) / STB:08.50 (08.50) / SP:09.25 (09.25)	35.65
95	Yasmine Frischknecht	2007	Wiesendangen	BO:08.65 (08.65) / WE:8.60 (2.67) / SL:9.20 (00:11.00) / SP:09.15 (09.15)	35.60
96	Selina Pfister	2008	Trüllikon	BO:08.40 (08.40) / SL:8.80 (00:11.56) / FIT:8.95 (00:42.12) / SS:9.40 (129)	35.55
	Kaija Bolliger	2008	Buch am Irchel	SL:8.50 (00:11.93) / FIT:9.25 (00:40.94) / ZW:8.75 (13) / SP:09.05 (09.05)	35.55
	Sina Wüthrich	2008	Henggart	BO:09.45 (09.45) / SL:8.90 (00:11.46) / ZW:7.75 (09) / SP:09.45 (09.45)	35.55
	Livia Fink	2007	Andelfingen	BO:08.90 (08.90) / FIT:9.25 (00:40.34) / SS:8.50 (110) / STB:08.90 (08.90)	35.55
100	Celina Gross	2008	Andelfingen	HW:8.30 (0.75) / WE:8.60 (2.58) / SL:9.10 (00:11.28) / ZW:9.50 (16)	35.50
	Lovisa Lange	2007	Töss	BO:08.80 (08.80) / WE:8.60 (2.62) / SL:9.30 (00:10.97) / FIT:8.80 (00:43.53)	35.50
	Aurelia Haefeli	2008	Henggart	BO:08.60 (08.60) / FIT:9.25 (00:40.40) / ZW:9.00 (14) / SP:08.65 (08.65)	35.50
	Ada Carbonell	2007	Räterschen	BO:09.25 (09.25) / SL:8.50 (00:11.88) / FIT:9.25 (00:40.91) / ZW:8.50 (12)	35.50
104	Lisa Spiller	2008	Neftenbach	HW:8.60 (0.80) / SL:9.50 (00:10.56) / FIT:9.10 (00:41.09) / ZW:8.25 (11)	35.45
	Kira Meissner	2008	Andelfingen	HW:8.60 (0.80) / WE:8.70 (2.72) / SL:9.40 (00:10.72) / ZW:8.75 (13)	35.45
106	Anika Schmid	2008	Andelfingen	HW:8.30 (0.75) / WE:8.80 (2.80) / SL:9.30 (00:10.97) / ZW:9.00 (14)	35.40
	Amra Serifi	2008	Pfungen	SL:9.30 (00:10.87) / FIT:8.95 (00:42.72) / ZW:8.75 (13) / SP:08.40 (08.40)	35.40
108	Emilia Pieri	2008	Neftenbach	HW:8.30 (0.75) / SL:9.20 (00:11.03) / FIT:9.10 (00:41.94) / ZW:8.75 (13)	35.35
	Ilaria Eggenberger	2007	Neftenbach	BO:07.90 (07.90) / HW:8.90 (0.85) / FIT:9.25 (00:40.22) / SP:09.30 (09.30)	35.35
	Zana Blakaj	2007	Töss	BO:08.30 (08.30) / WE:8.60 (2.60) / SL:9.20 (00:11.19) / FIT:9.25 (00:40.56)	35.35
	Léonie Dennert	2007	Hegi	BO:08.90 (08.90) / WE:8.40 (2.48) / FIT:9.25 (00:40.93) / SP:08.80 (08.80)	35.35
112	Fabienne Onyeka	2008	Henggart	BO:08.50 (08.50) / HW:8.60 (0.80) / SL:9.00 (00:11.30) / STB:09.20 (09.20)	35.30
	Lydia Szabo	2008	Pfungen	SL:8.90 (00:11.40) / FIT:8.65 (00:44.38) / SS:8.30 (106) / SP:09.45 (09.45)	35.30
	Jil Klemenz	2007	Neftenbach	BO:08.30 (08.30) / SL:9.20 (00:11.09) / FIT:8.80 (00:43.25) / SP:09.00 (09.00)	35.30
115	Amy Aeeter	2007	Räterschen	BO:09.35 (09.35) / SL:8.10 (00:12.62) / FIT:8.80 (00:43.88) / ZW:9.00 (14)	35.25
116	Vanessa Schluchter	2008	Brütten	BO:07.90 (07.90) / FIT:9.55 (00:38.94) / ZW:8.75 (13) / SP:09.00 (09.00)	35.20
	Lena Schardl	2008	Buch am Irchel	BO:08.60 (08.60) / SL:8.50 (00:11.80) / STB:09.30 (09.30) / SP:08.80 (08.80)	35.20
	Rahel Mahmadaliev	2008	Ossingen	BO:08.85 (08.85) / WE:8.70 (2.73) / SL:9.00 (00:11.33) / FIT:8.65 (00:44.38)	35.20
119	Leandra Hug	2008	Neftenbach	BO:07.30 (07.30) / SL:9.10 (00:11.28) / FIT:10.00 (00:35.72) / ZW:8.75 (13)	35.15
	Sofia Baumann	2007	Neftenbach	BO:08.30 (08.30) / HW:8.60 (0.80) / FIT:8.95 (00:42.18) / SP:09.30 (09.30)	35.15
	Jasmin Frei	2008	Neftenbach	BO:07.90 (07.90) / SL:8.60 (00:11.78) / FIT:9.40 (00:39.66) / SP:09.25 (09.25)	35.15

Rang	Person	Jg	Verein	Leistungen	Total
122	Victoria Keller	2008	Andelfingen	BO:08.40 (08.40) / FIT:9.40 (00:39.66) / ZW:8.50 (12) / STB:08.80 (08.80)	35.10
	Jule Prister	2007	Andelfingen	BO:08.30 (08.30) / WE:8.90 (2.86) / SL:9.20 (00:11.06) / STB:08.70 (08.70)	35.10
	Lina Flückiger	2008	Wiesendangen	BO:08.85 (08.85) / WE:8.40 (2.50) / FIT:8.95 (00:42.60) / SP:08.90 (08.90)	35.10
	Sophie Stolz	2008	Buch am Irchel	BO:08.20 (08.20) / HW:8.30 (0.75) / SL:9.20 (00:11.15) / STB:09.40 (09.40)	35.10
126	Fabienne Frei	2007	Wiesendangen	BO:09.15 (09.15) / WE:8.20 (2.34) / FIT:8.65 (00:44.88) / SP:09.00 (09.00)	35.00
	Mara Ris	2007	Neftenbach	BO:08.90 (08.90) / WE:8.90 (2.89) / ZW:8.00 (10) / SP:09.20 (09.20)	35.00
128	Elena Roth	2007	Andelfingen	BO:07.90 (07.90) / WE:8.70 (2.76) / ZW:9.25 (15) / STB:09.10 (09.10)	34.95
	Sofia Meier	2008	Andelfingen	HW:8.30 (0.75) / WE:8.40 (2.45) / SL:9.50 (00:10.57) / ZW:8.75 (13)	34.95
	Yaél Pollack	2008	Flurlingen	HW:8.00 (0.70) / SL:8.40 (00:12.06) / FIT:9.55 (00:38.94) / ZW:9.00 (14)	34.95
	Emily Cano	2008	Oberwinterthur	BO:07.75 (07.75) / SL:8.60 (00:11.72) / FIT:9.25 (00:40.50) / STB:09.35 (09.35)	34.95
132	Lea Meier	2007	Töss	BO:08.85 (08.85) / WE:8.40 (2.51) / SL:8.40 (00:12.16) / FIT:9.25 (00:40.50)	34.90
133	Lia Marie Balderer	2007	Töss	BO:08.65 (08.65) / WE:8.30 (2.38) / SL:8.80 (00:11.53) / FIT:9.10 (00:41.59)	34.85
134	Yara Schneider	2007	Wiesendangen	BO:08.70 (08.70) / SL:9.20 (00:11.18) / ZW:8.50 (12) / SP:08.40 (08.40)	34.80
135	Fiona Meyer	2007	Stammertal	HW:8.30 (0.75) / SL:9.20 (00:11.19) / ZW:8.25 (11) / SP:09.00 (09.00)	34.75
	Alina Horisberger	2008	Neftenbach	HW:8.00 (0.70) / SL:9.30 (00:10.85) / FIT:8.95 (00:42.28) / ZW:8.50 (12)	34.75
	Samira Kappeler	2008	Brütten	BO:09.00 (09.00) / FIT:9.25 (00:40.31) / SS:6.90 (078) / SP:09.60 (09.60)	34.75
138	Sarina Egli	2008	Neftenbach	HW:9.20 (0.90) / SL:8.80 (00:11.59) / FIT:8.95 (00:42.93) / ZW:7.75 (09)	34.70
139	Ranja Baltensperger	2008	Neftenbach	HW:8.60 (0.80) / SL:9.10 (00:11.28) / FIT:8.95 (00:42.47) / ZW:8.00 (10)	34.65
	Emilia Aegerter	2007	Brütten	SL:8.90 (00:11.40) / FIT:8.95 (00:42.69) / SS:8.00 (100) / SP:08.80 (08.80)	34.65
	Selina Reutemann	2007	Andelfingen	BO:07.35 (07.35) / WE:9.00 (2.93) / FIT:9.25 (00:40.41) / STB:09.05 (09.05)	34.65
	Seanna Liu	2007	Andelfingen	BO:08.50 (08.50) / SL:9.40 (00:10.65) / SS:8.00 (101) / STB:08.75 (08.75)	34.65
	Mackenzie Erarslan	2007	Neftenbach	BO:08.00 (08.00) / SL:8.20 (00:12.53) / FIT:9.25 (00:40.04) / SP:09.20 (09.20)	34.65
144	Annina Heinz	2008	Andelfingen	HW:8.30 (0.75) / WE:8.40 (2.49) / SL:8.90 (00:11.44) / ZW:9.00 (14)	34.60
	Frida Gassmann	2008	Töss	BO:08.45 (08.45) / WE:8.60 (2.59) / SL:8.90 (00:11.45) / FIT:8.65 (00:44.22)	34.60
	Jessica Leemann	2008	Buch am Irchel	BO:08.40 (08.40) / WE:8.70 (2.75) / SL:9.30 (00:10.94) / SP:08.20 (08.20)	34.60
147	Milena Zarevac	2007	Andelfingen	BO:08.40 (08.40) / HW:8.60 (0.80) / SL:8.70 (00:11.63) / STB:08.80 (08.80)	34.50
	Joelle Meier	2008	Neftenbach	HW:8.30 (0.75) / SL:8.90 (00:11.47) / FIT:8.80 (00:43.50) / ZW:8.50 (12)	34.50
	Lia Inayat	2007	Neftenbach	BO:08.00 (08.00) / SL:8.70 (00:11.62) / FIT:8.80 (00:43.13) / SP:09.00 (09.00)	34.50
150	Luana Natale	2007	Andelfingen	BO:08.35 (08.35) / SL:9.40 (00:10.72) / SS:8.10 (102) / STB:08.60 (08.60)	34.45
	Patricia Bernegger	2007	Pfungen	SL:8.50 (00:11.96) / FIT:8.50 (00:45.97) / ZW:8.50 (12) / SP:08.95 (08.95)	34.45
152	Anesa Mamudi	2007	Pfungen	SL:9.10 (00:11.25) / FIT:9.25 (00:40.34) / ZW:7.25 (07) / SP:08.80 (08.80)	34.40
	Jillien Beyeler	2008	Pfungen	SL:8.90 (00:11.47) / FIT:8.50 (00:45.84) / ZW:8.25 (11) / SP:08.75 (08.75)	34.40
	Linda Cirillo	2008	Brütten	BO:08.20 (08.20) / FIT:9.10 (00:41.72) / ZW:8.25 (11) / SP:08.85 (08.85)	34.40
	Anna Riedo	2008	Rheinau	BO:08.55 (08.55) / FIT:8.35 (00:46.88) / STB:08.40 (08.40) / SP:09.10 (09.10)	34.40
156	Muriel Freiermuth	2007	Henggart	BO:08.90 (08.90) / WE:8.20 (2.32) / ZW:8.25 (11) / SP:09.00 (09.00)	34.35
	Nina Zurlinden	2008	Pfungen	SL:9.00 (00:11.31) / FIT:9.10 (00:41.34) / SS:7.40 (089) / SP:08.85 (08.85)	34.35
158	Antea Stulic	2008	Hegi	BO:09.00 (09.00) / WE:8.60 (2.63) / FIT:8.95 (00:42.65) / ZW:7.75 (09)	34.30
159	Mahara Baltensperger	2008	Neftenbach	HW:8.60 (0.80) / SL:8.50 (00:11.91) / FIT:8.65 (00:44.22) / ZW:8.50 (12)	34.25
160	Lisa Stierlin	2007	Räterschen	BO:09.45 (09.45) / SL:8.00 (00:12.99) / FIT:8.50 (00:45.25) / ZW:8.25 (11)	34.20
161	Laura Hofmeier	2007	Neftenbach	BO:07.25 (07.25) / SL:8.50 (00:11.84) / FIT:9.40 (00:39.75) / SP:08.95 (08.95)	34.10
	Lisa Marie Stilin	2008	Töss	BO:08.60 (08.60) / WE:9.00 (2.96) / SL:8.90 (00:11.44) / FIT:7.60 (00:51.12)	34.10

Rang	Person	Jg	Verein	Leistungen	Total
161	Jasmin Sandmeier	2007	Töss	BO:08.50 (08.50) / WE:8.00 (2.13) / SL:9.40 (00:10.68) / FIT:8.20 (00:47.47)	34.10
164	Radha Fattorini	2007	Brütten	BO:08.50 (08.50) / WE:8.95 (00:42.69) / SS:8.20 (105) / SP:08.40 (08.40)	34.05
165	Melina Schneider	2008	Wiesendangen	BO:09.30 (09.30) / WE:8.30 (2.43) / FIT:7.15 (00:54.31) / SP:09.25 (09.25)	34.00
	Serena Russo	2008	Andelfingen	HW:8.30 (0.75) / WE:8.80 (2.84) / SL:8.40 (00:12.16) / ZW:8.50 (12)	34.00
167	Fiona Blakaj	2008	Töss	BO:08.05 (08.05) / WE:8.60 (2.56) / SL:8.50 (00:11.84) / FIT:8.80 (00:43.00)	33.95
	Svenja Seiler	2008	Oberwinterthur	BO:08.10 (08.10) / ZW:8.25 (11) / STB:09.00 (09.00) / SP:08.60 (08.60)	33.95
169	Chanel Küster	2008	Rheinau	BO:07.55 (07.55) / KU:8.50 (3.11) / FIT:9.10 (00:41.34) / ZW:8.75 (13)	33.90
	Laura Schläpfer	2007	Henggart	BO:08.80 (08.80) / FIT:9.70 (00:37.72) / SS:6.70 (074) / STB:08.70 (08.70)	33.90
	Samira Washington	2007	Brütten	BO:07.90 (07.90) / FIT:8.50 (00:45.25) / ZW:9.25 (15) / SP:08.25 (08.25)	33.90
	Lynn Steinberg	2008	Hegi	BO:08.20 (08.20) / WE:7.90 (2.07) / STB:09.00 (09.00) / SP:08.80 (08.80)	33.90
	Jenny Bertschi	2007	Andelfingen	HW:8.90 (0.85) / WE:8.70 (2.69) / SS:7.50 (090) / STB:08.80 (08.80)	33.90
174	Aline von Moos	2008	Neftenbach	HW:8.00 (0.70) / SL:9.20 (00:11.10) / FIT:9.10 (00:41.59) / ZW:7.50 (08)	33.80
175	Laura da Silva Guimaraes	2007	Hegi	BO:08.40 (08.40) / WE:8.00 (2.18) / FIT:8.20 (00:47.63) / SP:09.15 (09.15)	33.75
176	Janina Baltensperger	2008	Rickenbach	HW:8.00 (0.70) / SL:8.50 (00:11.96) / FIT:8.65 (00:44.44) / STB:08.50 (08.50)	33.65
177	Léonie Antoniazza	2007	Hegi	BO:08.50 (08.50) / WE:8.30 (2.44) / STB:07.90 (07.90) / SP:08.90 (08.90)	33.60
	Mia Sigrist	2008	Neftenbach	HW:8.30 (0.75) / SL:8.50 (00:11.89) / FIT:8.05 (00:48.00) / ZW:8.75 (13)	33.60
179	Lara Archetti	2008	Neftenbach	HW:8.30 (0.75) / SL:8.30 (00:12.34) / FIT:8.95 (00:42.75) / ZW:8.00 (10)	33.55
180	Lynn Keiser	2008	Stammertal	HW:8.30 (0.75) / SL:8.30 (00:12.29) / ZW:8.00 (10) / SP:08.90 (08.90)	33.50
	Lina Tizami	2008	Töss	BO:08.55 (08.55) / WE:8.00 (2.15) / SL:8.30 (00:12.29) / FIT:8.65 (00:44.59)	33.50
182	Amanda Holzer	2008	Neftenbach	BO:08.10 (08.10) / SL:8.50 (00:11.94) / FIT:7.75 (00:50.53) / SP:09.10 (09.10)	33.45
	Giuliana Nicoli	2008	Pfungen	SL:8.30 (00:12.25) / FIT:8.95 (00:42.47) / SS:7.40 (089) / SP:08.80 (08.80)	33.45
	Marlies Lugho	2007	Andelfingen	BO:07.15 (07.15) / ZW:10.00 (18) / SS:7.80 (097) / STB:08.50 (08.50)	33.45
185	Lynn Noelia Baumgartner	2008	Andelfingen	HW:8.00 (0.70) / WE:8.40 (2.48) / SL:8.50 (00:11.84) / ZW:8.50 (12)	33.40
	Poppy Egerton	2007	Brütten	BO:08.15 (08.15) / FIT:7.75 (00:50.56) / ZW:9.00 (14) / SP:08.50 (08.50)	33.40
	Patrizia Koch	2007	Räterschen	BO:08.40 (08.40) / SL:8.10 (00:12.66) / FIT:8.65 (00:44.81) / ZW:8.25 (11)	33.40
188	Svenia Müllhaupt	2008	Räterschen	BO:08.30 (08.30) / SL:8.10 (00:12.67) / FIT:8.95 (00:42.25) / ZW:8.00 (10)	33.35
	Alina Aschwanden	2007	Buch am Irchel	BO:08.75 (08.75) / SS:6.90 (079) / STB:08.90 (08.90) / SP:08.80 (08.80)	33.35
190	Livia Bosshard	2008	Hegi	BO:08.10 (08.10) / FIT:8.50 (00:45.72) / ZW:8.00 (10) / SP:08.50 (08.50)	33.10
	Svenja Strasser	2007	Benken	STH:10.00 (35) / WE:8.70 (2.69) / SS:6.60 (073) / STB:07.80 (07.80)	33.10
192	Delia Wiederkehr	2008	Trüllikon	BO:08.00 (08.00) / SL:8.40 (00:12.00) / ZW:8.75 (13) / SS:7.90 (098)	33.05
	Lisa Schlatter	2007	Räterschen	BO:07.65 (07.65) / SL:8.00 (00:12.97) / FIT:8.65 (00:44.53) / ZW:8.75 (13)	33.05
	Fiona Halili	2007	Pfungen	SL:7.60 (00:13.69) / FIT:7.90 (00:49.56) / ZW:9.00 (14) / SP:08.55 (08.55)	33.05
195	Jil Bühler	2008	Andelfingen	HW:7.70 (0.65) / WE:8.10 (2.25) / SL:8.90 (00:11.43) / ZW:8.25 (11)	32.95
	Chantal Meier	2007	Neftenbach	BO:07.20 (07.20) / SL:8.30 (00:12.25) / FIT:8.35 (00:46.22) / SP:09.10 (09.10)	32.95
	Jana Dimitrijevic	2008	Andelfingen	BO:08.15 (08.15) / SL:9.10 (00:11.28) / SS:7.00 (081) / STB:08.70 (08.70)	32.95
	Alisha Kramer	2007	Andelfingen	BO:07.00 (07.00) / FIT:7.60 (00:51.41) / SS:9.90 (138) / STB:08.45 (08.45)	32.95
	Rahel Sigg	2007	Ossingen	BO:08.65 (08.65) / SL:8.40 (00:12.04) / FIT:9.10 (00:41.10) / SS:6.80 (076)	32.95
200	Jasmin Benker	2008	Rickenbach	BO:08.50 (08.50) / SL:7.80 (00:13.28) / ZW:8.25 (11) / STB:08.30 (08.30)	32.85
	Monja Freiermuth	2008	Henggart	WE:7.70 (1.89) / FIT:8.05 (00:48.84) / ZW:8.25 (11) / SP:08.85 (08.85)	32.85
202	Ladina Utzinger	2008	Neftenbach	HW:7.70 (0.65) / SL:8.30 (00:12.32) / FIT:8.05 (00:48.69) / ZW:8.75 (13)	32.80
	Lynn Ruchti	2008	Pfungen	SL:8.60 (00:11.71) / FIT:8.50 (00:45.44) / ZW:8.00 (10) / SP:07.70 (07.70)	32.80

Rang	Person	Jg	Verein	Leistungen	Total
204	Sophie Jacobi	2007	Andelfingen	BO:08.00 (08.00) / FIT:8.95 (00:42.72) / SS:7.00 (080) / STB:08.70 (08.70)	32.65
	Janina Hartmann	2008	Brütten	BO:07.15 (07.15) / FIT:8.80 (00:43.87) / ZW:8.75 (13) / SP:07.95 (07.95)	32.65
	Lara Klammsteiner	2008	Neftenbach	HW:8.00 (0.70) / SL:8.40 (00:12.14) / FIT:8.50 (00:45.59) / ZW:7.75 (09)	32.65
207	Julia Fritsche	2008	Hegi	BO:08.20 (08.20) / HW:7.70 (0.65) / ZW:7.50 (08) / SP:09.10 (09.10)	32.50
	Laila Simeon	2007	Hegi	BO:08.20 (08.20) / FIT:8.05 (00:48.25) / ZW:7.50 (08) / SP:08.75 (08.75)	32.50
209	Lorena Jöhl	2008	Hegi	HW:8.30 (0.75) / ZW:8.25 (11) / STB:07.50 (07.50) / SP:08.35 (08.35)	32.40
	Olivia Weilenmann	2008	Brütten	BO:07.60 (07.60) / FIT:8.20 (00:47.25) / ZW:7.50 (08) / SP:09.10 (09.10)	32.40
	Jaël Valente	2007	Andelfingen	BO:07.95 (07.95) / FIT:8.95 (00:42.35) / SS:7.00 (081) / STB:08.50 (08.50)	32.40
212	Nadja Burekovic	2008	Oberwinterthur	BO:07.70 (07.70) / ZW:8.25 (11) / STB:08.70 (08.70) / SP:07.70 (07.70)	32.35
213	Alisha Layla Moos	2007	Andelfingen	BO:07.00 (07.00) / WE:8.60 (2.59) / ZW:8.00 (10) / STB:08.70 (08.70)	32.30
	Anastasiya Lörli	2008	Neftenbach	BO:07.75 (07.75) / SL:8.20 (00:12.59) / FIT:8.65 (00:44.22) / SP:07.70 (07.70)	32.30
215	Dua Shamsa	2008	Ossingen	BO:08.55 (08.55) / WE:8.30 (2.40) / FIT:8.80 (00:43.00) / SS:6.50 (069)	32.15
216	Sara Fink	2007	Oberwinterthur	SL:8.30 (00:12.22) / FIT:8.35 (00:46.65) / SS:6.80 (077) / STB:08.60 (08.60)	32.05
	Louisa Kessler	2008	Neftenbach	HW:8.00 (0.70) / SL:8.20 (00:12.41) / FIT:7.60 (00:51.34) / ZW:8.25 (11)	32.05
218	Lea Freiesleben	2008	Andelfingen	HW:7.70 (0.65) / WE:7.80 (2.00) / SL:8.30 (00:12.34) / ZW:8.00 (10)	31.80
219	Dulandee Peiris	2008	Wiesendangen	BO:07.15 (07.15) / WE:7.20 (1.56) / FIT:9.10 (00:41.53) / SP:08.30 (08.30)	31.75
220	Leona Ramel	2008	Henggart	BO:07.85 (07.85) / ZW:7.50 (08) / SS:7.00 (080) / SP:09.25 (09.25)	31.60
221	Flavia Steinmann	2008	Andelfingen	HW:7.70 (0.65) / WE:7.90 (2.09) / SL:8.60 (00:11.78) / ZW:7.25 (07)	31.45
222	Sophia Wunderli	2008	Benken	STH:6.50 (07) / WE:8.40 (2.49) / FIT:8.20 (00:47.56) / STB:08.00 (08.00)	31.10
223	Rukan Baker	2008	Wiesendangen	BO:08.35 (08.35) / WE:7.40 (1.67) / FIT:7.45 (00:52.50) / ZW:7.75 (09)	30.95
224	Ariona Popaj	2008	Andelfingen	HW:7.40 (0.60) / WE:7.30 (1.61) / SL:7.70 (00:13.59) / ZW:8.50 (12)	30.90
225	Alejna Bilali	2007	Pfungen	SL:8.10 (00:12.75) / FIT:8.50 (00:45.35) / SS:6.50 (038) / STB:07.50 (07.50)	30.60
226	Zebib Feradi	2007	Neftenbach	BO:07.10 (07.10) / SL:8.30 (00:12.38) / ZW:7.25 (07) / SP:07.70 (07.70)	30.35
227	Flurina Winkler	2007	Andelfingen	BO:07.15 (07.15) / WE:7.70 (1.95) / ZW:7.25 (07) / STB:07.50 (07.50)	29.60
228	Kira Hausheer	2008	Trüllikon	BO:06.90 (06.90) / SL:7.60 (00:13.69) / ZW:7.75 (09) / SS:6.50 (051)	28.75

Allround

E (Mädchen)

Rang	Person	Jg	Verein	Leistungen	Total
1	Noelle Keller	2009	Stammertal	HW:9.60 (0.85) / SL:9.70 (00:10.62) / ZW:10.00 (15) / SP:09.80 (09.80)	39.10 G
2	Svenja Stutz	2009	Trüllikon	BO:08.55 (08.55) / SL:9.60 (00:10.97) / FIT:9.70 (00:39.97) / SS:10.00 (139)	37.85 S
	Lena Huwiler	2009	Wiesendangen	BO:09.20 (09.20) / WE:9.30 (2.83) / FIT:9.85 (00:38.78) / SP:09.50 (09.50)	37.85 S
4	Giulia Ritter	2009	Wiesendangen	BO:09.40 (09.40) / WE:8.60 (2.40) / FIT:9.85 (00:38.47) / SP:09.80 (09.80)	37.65 *
	Murielle Häne	2009	Pfungen	SL:9.50 (00:11.19) / FIT:9.85 (00:38.87) / SS:8.80 (096) / SP:09.50 (09.50)	37.65 *
6	Amira Huber	2009	Andelfingen	HW:9.20 (0.80) / WE:9.10 (2.73) / SL:9.50 (00:11.00) / ZW:9.75 (14)	37.55 *
7	Nina Abegg	2010	Neftenbach	HW:9.20 (0.80) / SL:9.50 (00:11.03) / FIT:9.25 (00:42.25) / ZW:9.50 (13)	37.45 *
	Lara Majdura	2009	Neftenbach	HW:9.20 (0.80) / SL:9.70 (00:10.78) / FIT:9.55 (00:40.47) / ZW:9.00 (11)	37.45 *
9	Lenja Oertli	2009	Ossingen	BO:09.20 (09.20) / WE:9.20 (2.80) / SL:9.40 (00:11.32) / FIT:9.55 (00:40.87)	37.35 *
10	Flavia Gut	2009	Stammertal	HW:8.90 (0.75) / SL:9.60 (00:10.91) / ZW:10.00 (15) / SP:08.75 (08.75)	37.25 *
11	Talisa Frieden	2009	Wiesendangen	BO:09.35 (09.35) / WE:8.70 (2.49) / FIT:9.40 (00:41.28) / SP:09.75 (09.75)	37.20 *
	Jaëlle Paratte	2009	Neftenbach	BO:09.70 (09.70) / SL:9.00 (00:12.13) / FIT:9.25 (00:42.29) / ZW:9.25 (12)	37.20 *
13	Emilia Büchi	2010	Rickenbach	BO:08.85 (08.85) / SL:9.50 (00:11.11) / FIT:9.25 (00:42.09) / ZW:9.50 (13)	37.10 *
14	Cheyenne Bertoa	2009	Neftenbach	HW:8.30 (0.65) / SL:9.70 (00:10.78) / FIT:9.40 (00:41.20) / ZW:9.50 (13)	36.90 *
	Lenja Griesser	2010	Andelfingen	HW:9.20 (0.80) / WE:9.00 (2.70) / SL:9.20 (00:11.62) / ZW:9.50 (13)	36.90 *
	Alexa Schmid	2009	Andelfingen	HW:8.90 (0.75) / WE:8.60 (2.42) / SL:9.40 (00:11.28) / ZW:10.00 (15)	36.90 *
17	Marilyn Akeret	2009	Andelfingen	HW:9.20 (0.80) / WE:9.00 (2.71) / SL:9.40 (00:11.22) / ZW:9.25 (12)	36.85 *
18	Lucy Hübscher	2009	Stammertal	BO:08.55 (08.55) / ZW:10.00 (15) / SS:8.70 (094) / SP:09.55 (09.55)	36.80 *
	Lia Kramer	2009	Buch am Irchel	BO:09.20 (09.20) / SL:9.00 (00:12.00) / STB:08.80 (08.80) / SP:09.80 (09.80)	36.80 *
20	Malea Rohner	2009	Ossingen	BO:08.80 (08.80) / WE:9.00 (2.70) / SL:9.40 (00:11.38) / FIT:9.55 (00:40.03)	36.75 *
21	Lene Prister	2010	Andelfingen	HW:9.20 (0.80) / WE:8.60 (2.40) / SL:9.40 (00:11.22) / ZW:9.50 (13)	36.70 *
22	Jenna Rubolino	2009	Neftenbach	HW:9.20 (0.80) / SL:9.40 (00:11.25) / FIT:9.55 (00:40.91) / ZW:8.50 (09)	36.65 *
	Melina Pfister	2009	Trüllikon	BO:07.90 (07.90) / SL:9.20 (00:11.78) / FIT:9.55 (00:40.69) / SS:10.00 (121)	36.65 *
24	Selina Bösch	2009	Neftenbach	HW:8.60 (0.70) / SL:9.10 (00:11.93) / FIT:9.40 (00:41.93) / ZW:9.50 (13)	36.60 *
25	Sara Verzino	2009	Henggart	HW:8.60 (0.70) / WE:9.00 (2.67) / SL:9.40 (00:11.31) / SP:09.50 (09.50)	36.50 *
26	Sanne Lisa Beutler	2009	Rickenbach	BO:09.15 (09.15) / SL:9.20 (00:11.78) / FIT:9.10 (00:43.78) / ZW:9.00 (11)	36.45 *
27	Nora Hasler	2009	Wiesendangen	BO:08.90 (08.90) / WE:9.20 (2.80) / SL:9.50 (00:11.19) / FIT:8.80 (00:45.32)	36.40 *
	Colleen Blatter	2009	Buch am Irchel	BO:09.25 (09.25) / FIT:9.25 (00:42.41) / STB:09.20 (09.20) / SP:08.70 (08.70)	36.40 *
29	Elina Stäuber	2009	Neftenbach	HW:8.90 (0.75) / SL:8.40 (00:12.85) / FIT:9.55 (00:40.91) / ZW:9.50 (13)	36.35 *
	Ayana Berger	2009	Andelfingen	HW:9.20 (0.80) / WE:8.90 (2.62) / SL:9.50 (00:11.00) / ZW:8.75 (10)	36.35 *
	Jael Meier	2009	Töss	BO:08.85 (08.85) / WE:9.00 (2.70) / SL:9.10 (00:11.91) / FIT:9.40 (00:41.81)	36.35 *
32	Anna Hug	2009	Töss	BO:08.95 (08.95) / WE:8.90 (2.64) / SL:9.20 (00:11.65) / FIT:9.25 (00:42.07)	36.30 *
33	Leonie Haller	2009	Neftenbach	HW:8.90 (0.75) / SL:8.70 (00:12.42) / FIT:9.40 (00:41.94) / ZW:9.25 (12)	36.25 *
	Malie Lieckfeld	2010	Henggart	HW:9.20 (0.80) / FIT:8.95 (00:44.44) / ZW:9.25 (12) / SP:08.85 (08.85)	36.25 *
35	Anouk Berger	2009	Andelfingen	HW:8.90 (0.75) / WE:8.90 (2.64) / SL:9.40 (00:11.38) / ZW:9.00 (11)	36.20 *
36	Lea Hiestand	2010	Neftenbach	HW:8.90 (0.75) / SL:9.60 (00:10.91) / FIT:8.65 (00:46.25) / ZW:9.00 (11)	36.15 *
37	Ilena Reber	2009	Wiesendangen	BO:09.15 (09.15) / WE:8.40 (2.23) / FIT:9.55 (00:40.16) / SP:09.00 (09.00)	36.10 *
	Jane Keller	2009	Trüllikon	BO:08.55 (08.55) / SL:9.70 (00:10.74) / FIT:9.25 (00:42.00) / SS:8.60 (092)	36.10 *
39	Laya Loinig	2009	Andelfingen	HW:8.90 (0.75) / WE:8.90 (2.63) / SL:9.50 (00:11.09) / ZW:8.75 (10)	36.05 *

Rang	Person	Jg	Verein	Leistungen	Total
40	Thiara Bachmair	2010	Wiesendangen	BO:09.25 (09.25) / WE:8.60 (2.38) / FIT:9.40 (00:41.32) / SP:08.75 (08.75)	36.00 *
41	Selina Lanter	2009	Buch am Irchel	BO:09.30 (09.30) / FIT:8.20 (00:49.03) / ZW:9.00 (11) / SP:09.40 (09.40)	35.90 *
42	Lenya Steiner	2009	Stammertal	BO:08.55 (08.55) / HW:8.60 (0.70) / ZW:10.00 (15) / SP:08.70 (08.70)	35.85 *
43	Sophia Notter	2009	Andelfingen	HW:8.30 (0.65) / WE:8.60 (2.34) / SL:9.40 (00:11.26) / ZW:9.50 (13)	35.80 *
44	Mara Oechslin	2009	Wiesendangen	BO:09.15 (09.15) / WE:8.10 (1.98) / FIT:9.40 (00:41.72) / SP:09.10 (09.10)	35.75 *
45	Elin Rechenmacher	2010	Neftenbach	HW:8.90 (0.75) / SL:9.60 (00:10.83) / FIT:8.95 (00:44.47) / ZW:8.25 (08)	35.70 *
	Kaja Hediger	2009	Wiesendangen	BO:09.05 (09.05) / WE:8.90 (2.60) / SL:9.40 (00:11.22) / FIT:8.35 (00:48.41)	35.70 *
47	Janine Gyger	2010	Andelfingen	HW:8.90 (0.75) / WE:8.70 (2.50) / SL:9.30 (00:11.40) / ZW:8.75 (10)	35.65 *
48	Laura Gutknecht	2010	Stammertal	BO:08.70 (08.70) / SL:9.20 (00:11.78) / ZW:8.75 (10) / SP:08.95 (08.95)	35.60 *
49	Tosca Zwahlen	2009	Andelfingen	HW:8.90 (0.75) / WE:8.90 (2.60) / SL:9.50 (00:11.09) / ZW:8.25 (08)	35.55 *
50	Joline Sturzenegger	2009	Oberwinterthur	BO:08.50 (08.50) / ZW:8.75 (10) / STB:09.20 (09.20) / SP:09.00 (09.00)	35.45 *
	Mara von Ballmoos	2009	Buch am Irchel	HW:8.90 (0.75) / SL:8.90 (00:12.28) / STB:08.80 (08.80) / SP:08.85 (08.85)	35.45 *
52	Elisa Rüttimann	2009	Wiesendangen	BO:09.00 (09.00) / WE:8.30 (2.18) / SL:9.60 (00:10.94) / FIT:8.50 (00:47.60)	35.40 *
	Sofia Roth	2009	Andelfingen	HW:8.60 (0.70) / WE:8.70 (2.44) / SL:9.10 (00:11.81) / ZW:9.00 (11)	35.40 *
	Anja Friedrich	2009	Neftenbach	HW:8.90 (0.75) / SL:9.00 (00:12.09) / FIT:8.50 (00:47.25) / ZW:9.00 (11)	35.40 *
55	Elea Tanner	2009	Stammertal	HW:8.90 (0.75) / SL:9.10 (00:11.83) / ZW:8.75 (10) / SP:08.60 (08.60)	35.35 *
	Lana Lou Mertl	2009	Henggart	HW:8.30 (0.65) / SL:9.20 (00:11.75) / FIT:8.65 (00:46.63) / SP:09.20 (09.20)	35.35 *
57	Sophia Wolfer	2009	Buch am Irchel	BO:09.00 (09.00) / SL:9.10 (00:11.82) / FIT:9.10 (00:43.34) / SP:08.10 (08.10)	35.30
58	Emma Hollenwäger	2009	Brütten	BO:08.50 (08.50) / FIT:9.70 (00:39.60) / ZW:8.00 (07) / SP:09.05 (09.05)	35.25
59	Pamo Büwang	2009	Neftenbach	BO:08.75 (08.75) / SL:8.80 (00:12.31) / FIT:8.65 (00:46.28) / ZW:9.00 (11)	35.20
	Raphaela Held	2009	Andelfingen	HW:8.30 (0.65) / WE:8.70 (2.50) / SL:9.20 (00:11.78) / ZW:9.00 (11)	35.20
61	Raffaella Aventaggiato	2010	Neftenbach	HW:8.60 (0.70) / SL:8.60 (00:12.53) / FIT:9.40 (00:41.75) / ZW:8.50 (09)	35.10
	Aline Anderes	2009	Andelfingen	HW:8.90 (0.75) / WE:8.00 (1.90) / SL:9.20 (00:11.78) / ZW:9.00 (11)	35.10
	Leonie Maier	2009	Räterschen	BO:09.00 (09.00) / SL:9.20 (00:11.62) / FIT:8.65 (00:46.03) / ZW:8.25 (08)	35.10
	Zoè Häusler	2010	Wiesendangen	BO:08.95 (08.95) / WE:8.30 (2.12) / FIT:9.10 (00:43.25) / ZW:8.75 (10)	35.10
65	Lilly Meier	2009	Wiesendangen	BO:09.10 (09.10) / WE:8.40 (2.24) / FIT:8.35 (00:48.19) / SP:09.20 (09.20)	35.05
	Meseret Debas	2010	Räterschen	BO:07.90 (07.90) / SL:8.80 (00:12.38) / FIT:9.10 (00:43.66) / ZW:9.25 (12)	35.05
	Tara Ketterer	2009	Andelfingen	HW:8.30 (0.65) / WE:9.00 (2.67) / SL:9.00 (00:12.16) / ZW:8.75 (10)	35.05
	Sophia Russo	2009	Andelfingen	HW:8.60 (0.70) / WE:8.90 (2.64) / SL:9.30 (00:11.53) / ZW:8.25 (08)	35.05
69	Nina Molnar	2009	Neftenbach	HW:8.90 (0.75) / SL:9.00 (00:12.00) / FIT:8.05 (00:50.15) / ZW:9.00 (11)	34.95
	Lina Oberndörfer	2009	Wiesendangen	BO:09.00 (09.00) / WE:8.60 (2.32) / FIT:9.10 (00:43.46) / ZW:8.25 (08)	34.95
	Noémi Langer	2009	Wiesendangen	BO:09.25 (09.25) / WE:8.10 (1.99) / FIT:8.50 (00:47.53) / SP:09.10 (09.10)	34.95
	Mary-Lou Keller	2009	Trüllikon	BO:08.70 (08.70) / SL:9.20 (00:11.72) / FIT:9.55 (00:40.84) / SS:7.50 (070)	34.95
73	Zoe Derungs	2010	Flurlingen	HW:8.90 (0.75) / SL:8.50 (00:12.69) / FIT:9.10 (00:43.78) / SS:8.40 (088)	34.90
	Samantha Baumann	2010	Henggart	HW:8.30 (0.65) / WE:7.70 (1.70) / SL:9.00 (00:12.12) / SP:09.90 (09.90)	34.90
	Aliya Mballow	2009	Andelfingen	HW:8.30 (0.65) / WE:7.90 (1.84) / SL:9.20 (00:11.78) / ZW:9.50 (13)	34.90
76	Zoe Lou Balderer	2010	Töss	BO:08.80 (08.80) / WE:8.40 (2.26) / SL:9.00 (00:12.03) / FIT:8.65 (00:46.31)	34.85
	Liana Erny	2010	Brütten	BO:07.90 (07.90) / FIT:9.40 (00:41.00) / ZW:8.75 (10) / SP:08.80 (08.80)	34.85
78	Isabel Moos	2010	Hegi	WE:8.40 (2.22) / FIT:8.50 (00:47.43) / ZW:9.00 (11) / SP:08.90 (08.90)	34.80
	Svenja Baur	2009	Wiesendangen	BO:08.85 (08.85) / WE:7.90 (1.85) / FIT:9.25 (00:42.59) / SP:08.80 (08.80)	34.80
	Mia Cuic	2009	Pfungen	SL:9.70 (00:10.62) / FIT:9.10 (00:43.41) / SS:7.40 (068) / SP:08.60 (08.60)	34.80

Rang	Person	Jg	Verein	Leistungen	Total
78	Andjelina Petrovic	2010	Neftenbach	HW:8.30 (0.65) / SL:8.50 (00:12.75) / FIT:9.25 (00:42.63) / ZW:8.75 (10)	34.80
82	Svenja Hönes	2009	Andelfingen	HW:8.00 (0.60) / WE:8.60 (2.40) / SL:8.90 (00:12.21) / ZW:9.25 (12)	34.75
	Laura Steiner	2009	Hegi	WE:8.10 (2.02) / ZW:9.50 (13) / STB:08.90 (08.90) / SP:08.25 (08.25)	34.75
84	Elin von Ballmoos	2009	Buch am Irchel	BO:08.30 (08.30) / FIT:8.35 (00:48.34) / STB:08.60 (08.60) / SP:09.45 (09.45)	34.70
	Noemi Corfu	2009	Andelfingen	HW:8.30 (0.65) / WE:8.20 (2.08) / SL:9.70 (00:10.75) / ZW:8.50 (09)	34.70
86	Julia Tejido	2009	Neftenbach	HW:8.60 (0.70) / SL:9.00 (00:12.09) / FIT:8.80 (00:45.29) / ZW:8.25 (08)	34.65
87	Jael Inayat	2009	Neftenbach	HW:8.60 (0.70) / SL:9.00 (00:12.10) / FIT:9.25 (00:42.81) / SS:7.70 (075)	34.55
	Laila Job	2009	Andelfingen	HW:8.00 (0.60) / WE:8.70 (2.45) / SL:9.10 (00:11.97) / ZW:8.75 (10)	34.55
89	Caroline Stoll	2009	Andelfingen	HW:8.60 (0.70) / WE:8.40 (2.25) / SL:9.00 (00:12.09) / ZW:8.50 (09)	34.50
	Noemi Schläpfer	2010	Henggart	HW:8.30 (0.65) / WE:8.40 (2.24) / SL:8.20 (00:13.31) / SP:09.60 (09.60)	34.50
	Sina Lagler	2009	Ossingen	BO:08.25 (08.25) / SL:8.90 (00:12.22) / FIT:8.35 (00:48.35) / ZW:9.00 (11)	34.50
92	Ladina Berger	2009	Andelfingen	HW:8.30 (0.65) / WE:7.80 (1.71) / SL:9.30 (00:11.47) / ZW:9.00 (11)	34.40
93	Emilie Keller	2010	Andelfingen	HW:7.70 (0.55) / WE:8.80 (2.55) / SL:9.10 (00:11.88) / ZW:8.75 (10)	34.35
94	Romina Schär	2011	Stammertal	BO:08.55 (08.55) / SL:9.00 (00:12.12) / ZW:8.00 (07) / SP:08.75 (08.75)	34.30
	Lena Wenger	2009	Stammertal	HW:8.90 (0.75) / SL:8.50 (00:12.69) / ZW:8.00 (07) / SP:08.90 (08.90)	34.30
96	Stefanie Hug	2009	Neftenbach	BO:08.00 (08.00) / SL:8.80 (00:12.35) / FIT:9.40 (00:41.25) / SS:8.00 (081)	34.20
97	Jana Kümin	2009	Räterschen	BO:08.10 (08.10) / SL:8.90 (00:12.28) / FIT:9.40 (00:41.72) / ZW:7.75 (06)	34.15
98	Jarina Konrad	2009	Henggart	HW:8.90 (0.75) / WE:8.20 (2.05) / SS:8.00 (081) / SP:09.00 (09.00)	34.10
	Diana Klemke	2009	Oberwinterthur	HW:8.30 (0.65) / WE:7.90 (1.82) / FIT:8.80 (00:45.65) / STB:09.10 (09.10)	34.10
	Eline Till	2010	Stammertal	HW:7.70 (0.55) / SL:8.50 (00:12.65) / ZW:9.50 (13) / SP:08.40 (08.40)	34.10
101	Ilenia Bernardin	2009	Buch am Irchel	BO:08.50 (08.50) / SL:9.00 (00:12.19) / FIT:8.05 (00:50.94) / SP:08.40 (08.40)	33.95
	Jana Dünki	2009	Ossingen	BO:08.50 (08.50) / WE:8.10 (1.98) / SL:8.40 (00:12.81) / FIT:8.95 (00:44.38)	33.95
	Sarina Sonderegger	2009	Henggart	HW:8.00 (0.60) / WE:8.00 (1.89) / SL:9.00 (00:12.13) / SP:08.95 (08.95)	33.95
104	Arina Revenko	2009	Flurlingen	HW:8.00 (0.60) / SL:8.40 (00:12.89) / FIT:8.50 (00:47.57) / SS:8.90 (099)	33.80
105	Nina Kuhn	2009	Trüllikon	BO:07.75 (07.75) / SL:8.80 (00:12.37) / FIT:8.35 (00:48.12) / SS:8.80 (096)	33.70
106	Jessica Frei	2009	Ossingen	BO:08.40 (08.40) / SL:7.90 (00:13.84) / FIT:8.35 (00:48.07) / ZW:9.00 (11)	33.65
107	Delia Te	2009	Wiesendangen	BO:08.85 (08.85) / WE:7.90 (1.83) / FIT:7.60 (00:53.35) / ZW:9.25 (12)	33.60
	Sinja Bechtiger	2009	Henggart	HW:8.60 (0.70) / SL:8.80 (00:12.32) / SS:7.10 (063) / SP:09.10 (09.10)	33.60
	Svenja Weilenmann	2010	Brütten	BO:07.50 (07.50) / FIT:8.20 (00:49.65) / ZW:9.00 (11) / SP:08.90 (08.90)	33.60
110	Emma Schlatter	2009	Räterschen	BO:08.45 (08.45) / SL:8.80 (00:12.35) / FIT:8.05 (00:50.04) / ZW:8.25 (08)	33.55
111	Delia Mayer	2009	Henggart	HW:8.90 (0.75) / ZW:9.00 (11) / SS:6.50 (042) / SP:09.05 (09.05)	33.45
112	Soraya Schiller	2009	Brütten	BO:07.80 (07.80) / FIT:9.10 (00:43.18) / ZW:7.75 (06) / SP:08.70 (08.70)	33.35
113	Lia Märki	2009	Brütten	BO:07.60 (07.60) / FIT:8.80 (00:45.59) / ZW:8.25 (08) / SP:08.65 (08.65)	33.30
	Elena Schölly	2009	Ossingen	BO:08.20 (08.20) / WE:8.10 (2.00) / SL:8.20 (00:13.31) / FIT:8.80 (00:45.47)	33.30
115	Anna Inayat	2009	Neftenbach	HW:8.30 (0.65) / SL:8.50 (00:12.75) / FIT:8.95 (00:44.41) / SS:7.50 (071)	33.25
	Milena Schawalder	2010	Andelfingen	HW:8.60 (0.70) / WE:8.60 (2.30) / SL:8.80 (00:12.32) / ZW:7.25 (04)	33.25
117	Daria Frei	2009	Oberwinterthur	BO:08.40 (08.40) / ZW:9.00 (11) / SS:7.00 (060) / STB:08.80 (08.80)	33.20
118	Anna Scheibli	2009	Andelfingen	HW:8.00 (0.60) / WE:8.30 (2.17) / SL:8.80 (00:12.31) / ZW:8.00 (07)	33.10
119	Sophie Gmür	2009	Brütten	SL:8.10 (00:13.43) / FIT:9.55 (00:40.50) / SS:6.60 (053) / SP:08.80 (08.80)	33.05
120	Dinah Breitenstein	2010	Ossingen	BO:07.90 (07.90) / WE:8.20 (2.05) / SL:8.70 (00:12.43) / FIT:8.20 (00:49.37)	33.00
	Noe Saxer	2009	Neftenbach	HW:7.40 (0.50) / SL:8.50 (00:12.75) / FIT:9.10 (00:43.22) / SS:8.00 (080)	33.00

Rang	Person	Jg	Verein	Leistungen	Total
122	Bebe Egerton	2009	Brütten	BO:07.00 (07.00) / FIT:8.65 (00:46.07) / ZW:8.50 (09) / SP:08.80 (08.80)	32.95
123	Lemonie Pellizzari	2009	Henggart	HW:8.00 (0.60) / ZW:8.50 (09) / SS:7.10 (063) / SP:09.20 (09.20)	32.80
124	Liv Thomsen	2009	Henggart	HW:8.30 (0.65) / FIT:7.90 (00:51.32) / ZW:8.00 (07) / SP:08.20 (08.20)	32.40
125	Andrina Lenzin	2009	Neftenbach	BO:07.10 (07.10) / SL:8.50 (00:12.66) / FIT:8.95 (00:44.25) / SS:7.80 (077)	32.35
126	Vivienne Ghazi	2009	Oberwinterthur	WE:7.30 (1.35) / ZW:8.25 (08) / SS:8.00 (080) / SP:08.70 (08.70)	32.25
127	Strasser Chiara	2009	Benken	STH:9.80 (34) / WE:8.20 (2.10) / SS:6.80 (057) / SP:07.40 (07.40)	32.20
128	Gina Welti	2009	Buch am Irchel	BO:08.35 (08.35) / FIT:7.45 (00:54.00) / ZW:7.75 (06) / SP:08.50 (08.50)	32.05
	Livia Küng	2009	Henggart	WE:7.20 (1.28) / SL:8.00 (00:13.62) / ZW:7.75 (06) / SP:09.10 (09.10)	32.05
130	Emma Ledermann	2010	Räterschen	BO:07.70 (07.70) / SL:8.30 (00:13.00) / FIT:8.20 (00:49.19) / ZW:7.50 (05)	31.70
131	Emel Albayrak	2009	Pfungen	SL:7.40 (00:14.88) / FIT:7.90 (00:51.66) / ZW:8.25 (08) / SP:07.90 (07.90)	31.45
132	Leana Miceli	2010	Hegi	WE:7.00 (1.09) / FIT:7.45 (00:54.19) / ZW:8.25 (08) / SP:08.40 (08.40)	31.10
133	Malina Senn	2010	Hegi	BO:06.60 (06.60) / SL:8.30 (00:13.15) / ZW:7.75 (06) / SP:08.30 (08.30)	30.95
	Lotte Schneider	2009	Wiesendangen	BO:08.45 (08.45) / WE:7.80 (1.75) / FIT:7.45 (00:54.15) / ZW:7.25 (04)	30.95
	Noëlle Wild	2009	Flurlingen	HW:8.30 (0.65) / SL:8.10 (00:13.47) / FIT:6.55 (01:04.00) / ZW:8.00 (07)	30.95
	Lisa Willi	2009	Pfungen	SL:7.90 (00:13.84) / FIT:8.05 (00:50.71) / SS:7.10 (062) / SP:07.90 (07.90)	30.95
137	Mia Stettler	2009	Neftenbach	HW:8.30 (0.65) / SL:7.70 (00:14.35) / FIT:6.55 (01:02.00) / ZW:7.25 (04)	29.80

Allround

F (Knaben)

Rang	Person	Jg	Verein	Leistungen	Total
1	Nicolas Bächtold	2001	Rheinau	BO:09.85 (09.85) / WE:9.70 (5.35) / SL:10.00 (00:10.19) / BA:10.00 (10.00)	39.55 G
2	Janis Sigg	2002	Ossingen	STH:10.00 (35) / SL:9.60 (00:10.81) / KU:10.00 (11.90) / SS:9.90 (178)	39.50 S
3	Luca Kauflin	2001	Rheinau	BO:09.70 (09.70) / KU:10.00 (10.94) / BA:09.50 (09.50) / SP:10.00 (10.00)	39.20 B
4	Nils Florijn	2001	Rheinau	BO:09.25 (09.25) / KU:9.60 (10.36) / FIT:9.85 (00:30.88) / SP:10.00 (10.00)	38.70 *
5	Robin Fürst	2001	Trüllikon	HW:9.20 (1.35) / WE:9.60 (5.22) / SL:9.90 (00:10.22) / FIT:9.85 (00:30.94)	38.55 *
6	Nils Maurer	2001	Flurlingen	HW:8.90 (1.30) / SL:9.50 (00:11.12) / KU:10.00 (10.97) / FIT:9.25 (00:34.22)	37.65 *
7	Mats Cibolini	2002	Rheinau	SL:9.80 (00:10.50) / KU:8.90 (09.19) / FIT:9.40 (00:33.03) / SP:09.05 (09.05)	37.15 *
8	Ruben Duarte	2002	Benken	SL:9.60 (00:10.97) / KU:8.60 (08.55) / FIT:10.00 (00:29.07) / SP:08.70 (08.70)	36.90 *
9	Marc Meier	2002	Wiesendangen	BO:09.05 (09.05) / WE:8.60 (4.56) / SL:9.50 (00:11.06) / FIT:9.70 (00:31.75)	36.85
10	Harmond Schneider	2002	Henggart	WE:9.00 (4.95) / SL:9.70 (00:10.75) / ZW:9.00 (20) / BA:09.10 (09.10)	36.80
11	Dominik Schwarz	2002	Henggart	WE:9.20 (5.02) / SL:9.60 (00:10.87) / ZW:8.50 (18) / BA:09.35 (09.35)	36.65
12	Dorian Ramadani	2001	Wiesendangen	BO:09.00 (09.00) / WE:7.90 (4.05) / SL:9.40 (00:11.34) / FIT:9.10 (00:35.59)	35.40
13	Timon Baumann	2002	Pfungen	BO:08.00 (08.00) / SL:9.10 (00:11.68) / FIT:9.55 (00:32.53) / ZW:8.50 (18)	35.15
	Tim Wingeier	2002	Seuzach	BO:09.00 (09.00) / WE:8.20 (4.32) / SL:9.30 (00:11.43) / FIT:8.65 (00:38.28)	35.15
15	Cyril Himmelberger	2002	Benken	SL:8.70 (00:12.04) / KU:8.80 (09.14) / FIT:9.40 (00:33.44) / SP:08.15 (08.15)	35.05
16	Pascal von Niederhäusern	2002	Wiesendangen	BO:08.75 (08.75) / SL:8.60 (00:12.28) / FIT:9.10 (00:35.47) / SP:08.25 (08.25)	34.70
17	Alessandro Rabus	2002	Rheinau	WE:7.80 (4.00) / SL:8.80 (00:11.94) / FIT:9.40 (00:33.90) / SP:08.50 (08.50)	34.50
18	Jannick Riond	2002	Pfungen	HW:7.70 (1.10) / SL:8.70 (00:12.06) / FIT:9.25 (00:34.13) / ZW:8.25 (17)	33.90
	Jan Sigrist	2002	Rheinau	KU:7.60 (06.55) / FIT:8.80 (00:37.93) / SS:8.80 (157) / SP:08.70 (08.70)	33.90
20	Adrin Angele	2002	Wiesendangen	BO:08.80 (08.80) / WE:7.80 (4.00) / SL:8.40 (00:12.69) / FIT:8.65 (00:38.06)	33.65
21	Stefan Furrer	2001	Seuzach	BO:08.90 (08.90) / WE:7.10 (3.45) / FIT:8.65 (00:38.19) / ZW:8.50 (18)	33.15

Allround

G (Knaben)

Rang	Person	Jg	Verein	Leistungen	Total
1	Julian Fürst	2003	Trüllikon	STH:10.00 (35) / HW:10.00 (1.30) / KU:9.90 (09.35) / FIT:10.00 (00:29.51)	39.90 G
	Mika Russenberger	2003	Henggart	HW:10.00 (1.30) / KU:10.00 (10.81) / ZW:10.00 (25) / SP:09.90 (09.90)	39.90 G
3	Mario Wegmann	2003	Ossingen	HW:10.00 (1.35) / WE:9.60 (4.98) / SL:10.00 (00:10.58) / FIT:9.85 (00:32.40)	39.45 B
4	Chris Lazzarotto	2004	Rheinau	BO:09.45 (09.45) / FIT:9.70 (00:33.88) / ZW:9.00 (19) / SP:10.00 (10.00)	38.15 *
5	Viktor Sigrist	2004	Rheinau	SL:8.80 (00:12.53) / FIT:9.85 (00:32.66) / ZW:10.00 (23) / SP:09.25 (09.25)	37.90 *
6	Florian Heer	2003	Pfungen	HW:8.90 (1.15) / SL:9.30 (00:11.88) / FIT:9.85 (00:32.78) / ZW:9.75 (22)	37.80 *
	Marco Wehrli	2003	Buch am Irchel	BO:09.50 (09.50) / SL:9.40 (00:11.75) / KU:9.50 (08.79) / FIT:9.40 (00:35.06)	37.80 *
8	Matyas Szabo	2003	Pfungen	HW:9.20 (1.20) / SL:9.30 (00:11.81) / KU:9.30 (08.46) / FIT:9.85 (00:32.44)	37.65 *
9	Philipp Häusler	2004	Hegi	BO:09.30 (09.30) / SL:8.60 (00:12.95) / FIT:9.40 (00:35.10) / SP:10.00 (10.00)	37.30 *
10	Kerim Rubli	2004	Rheinau	KU:10.00 (09.63) / FIT:8.95 (00:38.06) / SS:8.70 (145) / SP:09.55 (09.55)	37.20 *
	Benjamin Fürst	2003	Trüllikon	HW:9.60 (1.25) / SL:9.40 (00:11.72) / FIT:9.70 (00:33.57) / ZW:8.50 (17)	37.20 *
12	Layne Pletscher	2004	Rheinau	BO:08.95 (08.95) / SL:9.70 (00:11.12) / FIT:9.55 (00:34.71) / ZW:8.75 (18)	36.95 *
13	Patrick Penalba	2003	Henggart	BO:09.15 (09.15) / WE:8.60 (4.30) / SL:9.50 (00:11.53) / FIT:9.40 (00:35.16)	36.65 *
14	Felix Jenni	2003	Rheinau	BO:08.95 (08.95) / FIT:9.40 (00:35.40) / SS:9.80 (167) / SP:08.40 (08.40)	36.55 *
15	Marc Steinmann	2004	Brütten	HW:9.20 (1.20) / SL:8.80 (00:12.50) / KU:8.80 (07.72) / FIT:9.70 (00:33.54)	36.50 *
16	Noe Schmid	2004	Wiesendangen	BO:09.15 (09.15) / SL:8.60 (00:12.94) / FIT:9.10 (00:37.38) / SP:09.40 (09.40)	36.25 *
17	Noah Lüthi	2003	Hegi	BO:09.40 (09.40) / WE:8.80 (4.50) / SL:9.50 (00:11.59) / ZW:8.50 (17)	36.20 *
18	Pascal Maurer	2003	Benken	SL:9.50 (00:11.47) / KU:9.80 (09.22) / FIT:9.10 (00:37.25) / SP:07.70 (07.70)	36.10 *
19	Michael Schellhaas	2004	Henggart	BO:09.10 (09.10) / KU:8.40 (06.93) / BA:09.10 (09.10) / SP:09.45 (09.45)	36.05 *
20	David Castilla	2003	Wiesendangen	BO:08.55 (08.55) / SL:8.90 (00:12.46) / FIT:9.25 (00:36.22) / SP:09.10 (09.10)	35.80 *
21	Loris Scherrer	2004	Neftenbach	WE:7.80 (3.71) / SL:9.50 (00:11.47) / SS:9.30 (157) / SP:09.00 (09.00)	35.60 *
	Nils Moerbeek	2004	Benken	WE:9.00 (4.60) / SL:9.30 (00:11.88) / FIT:9.40 (00:35.59) / SP:07.90 (07.90)	35.60 *
23	André Pfister	2003	Henggart	BO:08.20 (08.20) / WE:8.30 (4.10) / SL:9.30 (00:11.87) / FIT:9.55 (00:34.81)	35.35 *
	Benjamin Fuchs	2004	Rheinau	BO:08.85 (08.85) / SL:8.50 (00:13.10) / FIT:9.25 (00:36.56) / ZW:8.75 (18)	35.35 *
25	Urs Schwesinger	2004	Oberwinterthur	HW:8.90 (1.15) / WE:7.80 (3.70) / SL:9.20 (00:12.16) / FIT:9.25 (00:36.12)	35.15 *
	Jeremias Jetzer	2003	Wiesendangen	BO:08.45 (08.45) / WE:8.30 (4.10) / SL:8.70 (00:12.78) / FIT:9.70 (00:33.81)	35.15 *
27	Miguel-Angel Lopez	2004	Seuzach	BO:09.20 (09.20) / SL:8.40 (00:13.32) / FIT:9.10 (00:37.65) / ZW:8.25 (16)	34.95
28	Tim Naef	2004	Buch am Irchel	BO:09.15 (09.15) / KU:8.60 (07.22) / FIT:8.80 (00:39.41) / SP:08.35 (08.35)	34.90
29	Merlin Minder	2004	Neftenbach	HW:8.90 (1.15) / WE:8.20 (3.96) / SL:9.10 (00:12.28) / FIT:8.65 (00:40.00)	34.85
30	Jakob Hegenberg	2004	Hegi	BO:09.35 (09.35) / WE:8.70 (4.42) / SL:9.50 (00:11.59) / ZW:7.25 (12)	34.80
	Alessandro Galati	2004	Räterschen	BO:09.10 (09.10) / WE:7.80 (3.70) / SL:8.40 (00:13.25) / SP:09.50 (09.50)	34.80
	Silvan Linsi	2004	Buch am Irchel	BO:09.15 (09.15) / WE:7.80 (3.69) / FIT:9.70 (00:33.94) / SP:08.15 (08.15)	34.80
	Elon Friess	2004	Hofstetten	HW:8.60 (1.10) / WE:8.00 (3.86) / SL:8.50 (00:13.10) / FIT:9.70 (00:33.19)	34.80
34	Fabian Marder	2003	Rheinau	BO:08.75 (08.75) / KU:8.20 (06.52) / FIT:8.95 (00:38.56) / SP:08.85 (08.85)	34.75
35	Fabian Strasser	2004	Benken	WE:7.70 (3.62) / SL:8.70 (00:12.69) / FIT:8.80 (00:39.40) / SP:09.35 (09.35)	34.55
36	Nick Fischer	2003	Ossingen	BO:07.30 (07.30) / WE:8.30 (4.06) / SL:9.40 (00:11.75) / FIT:9.25 (00:36.66)	34.25
37	Ciril Schneider	2004	Wiesendangen	BO:08.80 (08.80) / WE:8.20 (4.00) / KU:8.50 (07.00) / SP:08.70 (08.70)	34.20
38	Lorin Kern	2004	Henggart	HW:8.30 (1.05) / SL:8.60 (00:12.97) / FIT:8.95 (00:38.91) / ZW:8.25 (16)	34.10
39	Ael Banyard	2004	Rheinau	BO:08.70 (08.70) / WE:7.40 (3.34) / FIT:8.95 (00:38.41) / SP:09.00 (09.00)	34.05

Rang	Person	Jg	Verein	Leistungen	Total
40	Luca Verna	2004	Wiesendangen	BO:08.50 (08.50) / WE:7.80 (3.66) / SL:8.30 (00:13.53) / FIT:9.40 (00:35.40)	34.00
	Jarno Wehrli	2003	Trüllikon	HW:8.00 (1.00) / SL:8.50 (00:13.13) / FIT:9.25 (00:36.00) / ZW:8.25 (16)	34.00
42	Linus Aregger	2004	Benken	WE:7.40 (3.33) / SL:8.70 (00:12.69) / FIT:9.40 (00:35.13) / SP:08.30 (08.30)	33.80
	Silvan Kuhn	2003	Trüllikon	HW:8.00 (1.00) / SL:8.30 (00:13.41) / FIT:9.25 (00:36.19) / ZW:8.25 (16)	33.80
44	Lorenz Stewart	2004	Trüllikon	STH:7.20 (21) / KU:9.00 (08.02) / FIT:9.25 (00:36.68) / ZW:8.25 (16)	33.70
45	Marc Spaltenstein	2003	Pfungen	HW:8.00 (1.00) / SL:7.90 (00:14.38) / FIT:9.10 (00:37.94) / ZW:8.50 (17)	33.50
	Marcel Sigg	2003	Ossingen	BO:08.65 (08.65) / WE:7.60 (3.41) / SL:8.30 (00:13.59) / FIT:8.95 (00:38.87)	33.50
47	Aedan Beer	2004	Buch am Irchel	BO:08.85 (08.85) / FIT:8.65 (00:40.78) / ZW:8.25 (16) / SP:07.70 (07.70)	33.45
48	Andi Frei	2003	Wiesendangen	BO:09.10 (09.10) / WE:7.00 (3.06) / KU:8.40 (06.85) / SP:08.90 (08.90)	33.40
49	Luca Meier	2003	Neftenbach	HW:8.00 (1.00) / WE:8.00 (3.84) / SL:8.50 (00:13.09) / FIT:8.65 (00:40.84)	33.15
50	Luca Palumbo	2004	Flurlingen	HW:7.40 (0.90) / SL:8.40 (00:13.32) / FIT:9.85 (00:32.91) / ZW:7.25 (12)	32.90
51	Kilian Gadowski	2004	Wiesendangen	BO:08.80 (08.80) / WE:7.10 (3.10) / SL:8.50 (00:13.00) / SP:08.20 (08.20)	32.60
52	Deiko Kappeler	2004	Wiesendangen	BO:08.65 (08.65) / WE:7.60 (3.45) / KU:8.70 (07.51) / SP:07.60 (07.60)	32.55
53	Timo Götz	2004	Neftenbach	STH:6.50 (12) / SL:8.70 (00:12.79) / ZW:8.00 (15) / SP:08.90 (08.90)	32.10
	Yannik Zysset	2004	Ossingen	HW:7.70 (0.95) / WE:7.30 (3.27) / KU:8.00 (06.08) / FIT:9.10 (00:37.31)	32.10
55	Jerome Moser	2004	Seuzach	BO:08.30 (08.30) / SL:7.40 (00:15.38) / FIT:7.75 (00:46.03) / ZW:8.00 (15)	31.45
	Julian Meili	2003	Rickenbach	BO:08.40 (08.40) / WE:6.80 (2.91) / SL:7.60 (00:14.81) / FIT:8.65 (00:40.82)	31.45
57	David Kramer	2004	Buch am Irchel	BO:07.80 (07.80) / STH:6.50 (05) / KU:8.00 (06.05) / SP:08.70 (08.70)	31.00
58	Florian Wegmann	2004	Seuzach	BO:08.20 (08.20) / SL:7.90 (00:14.30) / FIT:7.45 (00:48.81) / ZW:6.75 (10)	30.30
59	Noah Piffner	2004	Hegi	BO:08.65 (08.65) / WE:6.80 (2.89) / SL:7.30 (00:15.50) / ZW:7.25 (12)	30.00
60	Ege Ulu	2004	Hegi	BO:07.70 (07.70) / WE:7.00 (3.05) / SL:6.80 (00:16.44) / ZW:7.50 (13)	29.00
61	Ashwath Suthakaran	2004	Pfungen	HW:6.50 (0.70) / SL:7.60 (00:14.84) / FIT:8.05 (00:44.19) / ZW:6.75 (10)	28.90
62	Ayushan Ahilan	2004	Pfungen	HW:6.50 (0.65) / SL:6.50 (00:17.41) / FIT:7.30 (00:49.87) / ZW:8.25 (16)	28.55

Allround

H (Knaben)

Rang	Person	Jg	Verein	Leistungen	Total
1	Thierry Jaquet	2005	Rheinau	BO:09.20 (09.20) / FIT:9.85 (00:34.94) / ZW:10.00 (22) / SP:09.45 (09.45)	38.50 G
2	Kim Izevbigie	2005	Neftenbach	HW:8.90 (1.05) / WE:9.90 (4.28) / SL:9.50 (00:11.81) / ZW:10.00 (21)	38.30 S
3	Kimi Russenberger	2005	Henggart	BO:09.70 (09.70) / SL:8.60 (00:13.16) / BA:09.75 (09.75) / SP:09.90 (09.90)	37.95 B
4	Erik Wehrli	2005	Trüllikon	HW:9.20 (1.10) / WE:9.20 (3.85) / SL:9.50 (00:11.94) / ZW:10.00 (21)	37.90 *
5	Adrian Sieber	2006	Flurlingen	HW:8.30 (0.95) / SL:9.50 (00:11.97) / FIT:10.00 (00:31.04) / ZW:10.00 (20)	37.80 *
6	Tim Engler	2005	Stammertal	HW:10.00 (1.20) / WE:9.20 (3.84) / SL:8.80 (00:12.84) / SP:09.65 (09.65)	37.65 *
7	Fabian Schwarz	2005	Henggart	HW:8.90 (1.05) / WE:9.00 (3.72) / FIT:9.70 (00:35.09) / SP:10.00 (10.00)	37.60 *
	Noe Stahel	2006	Neftenbach	HW:9.20 (1.10) / SL:9.30 (00:12.35) / FIT:9.85 (00:34.41) / ZW:9.25 (17)	37.60 *
9	Harry Albrow	2005	Stammertal	HW:10.00 (1.20) / SL:8.60 (00:13.18) / BA:09.05 (09.05) / SP:09.90 (09.90)	37.55 *
10	Lars Wegmann	2005	Ossingen	BO:09.00 (09.00) / WE:9.10 (3.76) / SL:9.40 (00:12.12) / FIT:10.00 (00:32.72)	37.50 *
11	Nico Bosshard	2005	Pfungen	HW:8.60 (1.00) / SL:9.40 (00:12.19) / KU:9.20 (7.33) / FIT:10.00 (00:33.53)	37.20 *
12	Dominik Allemann	2005	Pfungen	HW:8.90 (1.05) / SL:9.10 (00:12.52) / FIT:9.85 (00:34.13) / ZW:9.25 (17)	37.10 *
	Robin Hirsiger	2006	Buch am Irchel	BO:09.60 (09.60) / SL:8.90 (00:12.75) / FIT:9.85 (00:34.03) / SP:08.75 (08.75)	37.10 *
14	Niklas Kramer	2005	Oberwinterthur	BO:09.05 (09.05) / WE:8.80 (3.54) / FIT:9.70 (00:35.75) / SS:9.50 (150)	37.05 *
15	Nico Leccadito	2005	Pfungen	HW:9.20 (1.10) / SL:9.00 (00:12.65) / KU:8.80 (6.74) / FIT:10.00 (00:33.28)	37.00 *
16	Noah Steinmann	2005	Brütten	BO:09.05 (09.05) / WE:8.90 (3.62) / FIT:9.55 (00:36.25) / SP:09.45 (09.45)	36.95 *
17	Sean Pletscher	2005	Rheinau	WE:8.40 (3.24) / FIT:10.00 (00:33.22) / ZW:9.50 (18) / SP:08.85 (08.85)	36.75 *
18	Anathan Kanagaratnam	2006	Rheinau	BO:09.70 (09.70) / SL:8.60 (00:13.22) / FIT:9.55 (00:36.50) / SP:08.85 (08.85)	36.70 *
	Jonas Baderrtscher	2005	Trüllikon	STH:8.60 (28) / SL:9.00 (00:12.69) / FIT:9.85 (00:34.19) / ZW:9.25 (17)	36.70 *
20	Frederik Weber	2006	Brütten	HW:8.60 (1.00) / WE:9.30 (3.90) / SL:8.90 (00:12.72) / FIT:9.85 (00:34.10)	36.65 *
	Niels Wäckerlin	2005	Brütten	HW:9.20 (1.10) / SL:9.10 (00:12.56) / FIT:9.25 (00:38.72) / SP:09.10 (09.10)	36.65 *
22	Erik Hegenberg	2006	Hegi	BO:09.75 (09.75) / SL:8.00 (00:14.31) / FIT:9.10 (00:39.15) / SP:09.70 (09.70)	36.55 *
	Lucas von Euw	2006	Oberwinterthur	BO:08.55 (08.55) / WE:8.70 (3.50) / FIT:9.70 (00:35.37) / SP:09.60 (09.60)	36.55 *
24	Tim Watzlaw	2005	Seuzach	BO:09.30 (09.30) / SL:8.70 (00:12.97) / FIT:9.25 (00:38.04) / SP:09.10 (09.10)	36.35 *
25	Flurin Zimmermann	2005	Ossingen	BO:08.95 (08.95) / WE:8.90 (3.69) / SL:8.90 (00:12.75) / FIT:9.55 (00:36.78)	36.30 *
26	Tim Schenk	2005	Ossingen	BO:08.65 (08.65) / WE:8.70 (3.46) / FIT:9.40 (00:37.87) / ZW:9.50 (18)	36.25 *
27	Noel Lang	2005	Flurlingen	HW:8.90 (1.05) / SL:8.50 (00:13.45) / FIT:9.55 (00:36.06) / ZW:9.25 (17)	36.20 *
28	Tom Thum	2005	Seuzach	BO:09.10 (09.10) / SL:9.30 (00:12.31) / FIT:8.50 (00:43.78) / ZW:9.25 (17)	36.15 *
29	Aidan Meier	2005	Oberwinterthur	HW:8.60 (1.00) / WE:8.90 (3.68) / SL:9.30 (00:12.25) / FIT:9.10 (00:39.09)	35.90 *
30	Nico Stabinger	2005	Oberwinterthur	SL:9.20 (00:12.45) / KU:8.40 (5.86) / FIT:9.85 (00:34.66) / SP:08.40 (08.40)	35.85 *
31	Max Steinberger	2005	Hegi	BO:08.85 (08.85) / WE:9.20 (3.85) / SL:9.00 (00:12.63) / ZW:8.75 (15)	35.80 *
	Marc Brandenberger	2005	Buch am Irchel	BO:09.30 (09.30) / FIT:9.10 (00:39.00) / ZW:9.00 (16) / SP:08.40 (08.40)	35.80 *
33	Nico Bertoa	2006	Neftenbach	HW:8.30 (0.95) / WE:8.70 (3.48) / SL:9.30 (00:12.37) / FIT:9.40 (00:37.28)	35.70 *
34	Laurin Gubler	2006	Hegi	BO:08.95 (08.95) / WE:9.00 (3.70) / SL:8.40 (00:13.66) / ZW:9.25 (17)	35.60 *
	Jack Fraefel	2005	Trüllikon	HW:8.90 (1.05) / SL:8.20 (00:13.91) / FIT:9.25 (00:38.81) / ZW:9.25 (17)	35.60 *
36	Jan Sigrist	2006	Neftenbach	HW:8.30 (0.95) / WE:8.30 (3.19) / FIT:9.10 (00:39.09) / ZW:9.75 (19)	35.45 *
37	Leon Tanner	2005	Stammertal	BO:09.00 (09.00) / SL:8.00 (00:14.35) / ZW:9.25 (17) / SP:09.15 (09.15)	35.40 *
	Jerome Schiesser	2006	Stammertal	BO:08.90 (08.90) / WE:8.80 (3.56) / SL:8.50 (00:13.34) / SP:09.20 (09.20)	35.40 *
	Timo Vögeli	2006	Henggart	HW:8.30 (0.95) / SL:8.50 (00:13.47) / FIT:9.25 (00:38.13) / SP:09.35 (09.35)	35.40 *

Rang	Person	Jg	Verein	Leistungen	Total
40	Fabio Erb	2005	Neftenbach	BO:08.95 (08.95) / SL:8.00 (00:14.31) / FIT:9.55 (00:36.91) / SP:08.85 (08.85)	35.35 *
	Manuel Wittenwiler	2005	Hegi	BO:09.20 (09.20) / WE:8.60 (3.42) / SL:8.30 (00:13.85) / ZW:9.25 (17)	35.35 *
42	Raul Rodriguez	2006	Henggart	HW:8.30 (0.95) / SL:8.70 (00:13.00) / FIT:9.55 (00:36.75) / ZW:8.75 (15)	35.30
	Joel Wenger	2005	Wiesendangen	BO:09.00 (09.00) / SL:8.70 (00:13.03) / FIT:8.20 (00:45.90) / SP:09.40 (09.40)	35.30
44	Jan Crevatin	2006	Hegi	BO:09.05 (09.05) / WE:8.90 (3.66) / SL:8.80 (00:12.82) / ZW:8.50 (14)	35.25
45	Noe Neff	2005	Neftenbach	WE:9.00 (3.71) / SL:9.00 (00:12.69) / SS:8.60 (133) / SP:08.60 (08.60)	35.20
46	Eric Billing	2005	Trüllikon	STH:8.00 (25) / SL:8.90 (00:12.78) / KU:8.40 (5.95) / FIT:9.85 (00:34.12)	35.15
47	Fabian Walter	2005	Seuzach	BO:08.75 (08.75) / WE:8.60 (3.33) / FIT:8.95 (00:40.31) / SP:08.80 (08.80)	35.10
48	Nils Bärlocher	2006	Seuzach	BO:09.15 (09.15) / SL:8.50 (00:13.31) / FIT:9.10 (00:39.59) / ZW:8.25 (13)	35.00
49	Mohamad Hakimi	2005	Rheinau	HW:8.30 (0.95) / WE:8.70 (3.52) / FIT:9.70 (00:35.84) / ZW:8.25 (13)	34.95
50	Carlos Castilla	2005	Wiesendangen	BO:09.30 (09.30) / SL:7.60 (00:15.25) / FIT:9.40 (00:37.25) / SP:08.60 (08.60)	34.90
51	Silas Westermann	2006	Buch am Irchel	HW:8.00 (0.90) / WE:8.40 (3.29) / SL:8.70 (00:13.03) / FIT:9.70 (00:35.68)	34.80
	Liam Rüegg	2005	Brütten	HW:9.20 (1.10) / SL:8.20 (00:13.90) / FIT:9.40 (00:37.12) / SP:08.00 (08.00)	34.80
53	Manuel Langhard	2006	Stammertal	BO:08.90 (08.90) / WE:8.70 (3.49) / SL:8.30 (00:13.78) / SP:08.85 (08.85)	34.75
54	Amar Ramic	2006	Flurlingen	HW:8.00 (0.90) / SL:8.50 (00:13.40) / FIT:9.10 (00:39.22) / ZW:9.00 (16)	34.60
	Julien Bolliger	2006	Buch am Irchel	BO:08.85 (08.85) / FIT:8.80 (00:41.87) / ZW:8.75 (15) / SP:08.20 (08.20)	34.60
56	Simon Sauter	2006	Pfungen	HW:7.70 (0.85) / SL:9.00 (00:12.66) / FIT:10.00 (00:33.81) / ZW:7.75 (11)	34.45
	Noel Huber	2006	Seuzach	BO:08.70 (08.70) / SL:8.20 (00:13.93) / FIT:8.80 (00:41.38) / ZW:8.75 (15)	34.45
58	Lars Friedrich	2005	Neftenbach	HW:8.60 (1.00) / SL:8.30 (00:13.81) / ZW:8.25 (13) / SP:09.20 (09.20)	34.35
59	Remo Wacker	2005	Buch am Irchel	BO:08.10 (08.10) / HW:8.60 (1.00) / FIT:9.25 (00:38.66) / SP:08.35 (08.35)	34.30
60	Lenny Te	2006	Wiesendangen	BO:08.80 (08.80) / WE:8.10 (2.99) / SL:7.90 (00:14.56) / FIT:9.40 (00:37.97)	34.20
61	Nicolas Bühler	2006	Brütten	HW:8.60 (1.00) / WE:8.30 (3.20) / SL:8.00 (00:14.47) / FIT:9.25 (00:38.19)	34.15
62	Leonard Roch	2006	Hegi	BO:08.75 (08.75) / WE:8.60 (3.37) / SL:8.00 (00:14.44) / ZW:8.75 (15)	34.10
63	Lars Kuhn	2006	Brütten	HW:7.70 (0.85) / SL:8.30 (00:13.84) / KU:8.50 (6.08) / FIT:9.55 (00:36.65)	34.05
64	Aniishan Ahilan	2006	Pfungen	HW:8.00 (0.90) / SL:8.10 (00:14.13) / FIT:9.10 (00:39.31) / ZW:8.75 (15)	33.95
	Jeffrey Hübscher	2006	Stammertal	BO:08.70 (08.70) / WE:8.20 (3.12) / SL:8.10 (00:14.22) / BA:08.95 (08.95)	33.95
66	Jonas Wehrli	2005	Brütten	HW:8.30 (0.95) / WE:8.10 (3.05) / FIT:9.25 (00:38.53) / ZW:8.25 (13)	33.90
67	Nicola Bänziger	2006	Brütten	HW:8.30 (0.95) / WE:8.10 (3.02) / SL:7.60 (00:15.15) / FIT:9.85 (00:34.75)	33.85
68	Jaro Zurlinden	2006	Pfungen	HW:7.70 (0.85) / SL:8.20 (00:14.00) / FIT:9.85 (00:34.91) / ZW:8.00 (12)	33.75
69	Matthias Jucker	2006	Pfungen	HW:8.00 (0.90) / SL:8.10 (00:14.12) / FIT:8.95 (00:40.81) / ZW:8.50 (14)	33.55
70	Basil Egli	2006	Ossingen	BO:07.90 (07.90) / WE:8.40 (3.24) / SL:8.10 (00:14.28) / ZW:9.00 (16)	33.40
	Janis Gauggel	2006	Neftenbach	HW:7.70 (0.85) / WE:8.00 (2.90) / SL:8.60 (00:13.21) / FIT:9.10 (00:39.78)	33.40
72	Tim Fischer	2006	Ossingen	BO:08.40 (08.40) / SL:8.40 (00:13.56) / KU:8.20 (5.47) / FIT:8.35 (00:44.09)	33.35
	Jascha Baumann	2006	Pfungen	HW:7.70 (0.85) / SL:7.90 (00:14.62) / FIT:9.25 (00:38.28) / ZW:8.50 (14)	33.35
74	Lukas Kuhn	2006	Trüllikon	HW:7.70 (0.85) / SL:7.80 (00:14.75) / FIT:9.10 (00:39.96) / ZW:8.50 (14)	33.10
75	Jan Wagner	2005	Hegi	BO:08.10 (08.10) / WE:9.10 (3.76) / SL:8.30 (00:13.81) / ZW:7.50 (10)	33.00
76	Benny Frei	2005	Neftenbach	WE:8.60 (3.37) / FIT:9.55 (00:36.66) / SS:6.80 (097) / SP:08.00 (08.00)	32.95
77	Jonas Häne	2006	Pfungen	HW:7.70 (0.85) / SL:8.10 (00:14.13) / FIT:9.10 (00:39.19) / ZW:8.00 (12)	32.90
	Thion Frei	2006	Oberwinterthur	BO:08.35 (08.35) / WE:7.80 (2.79) / KU:7.80 (4.71) / FIT:8.95 (00:40.13)	32.90
79	Sajdou El Omari	2006	Buch am Irchel	HW:8.00 (0.90) / WE:8.40 (3.22) / FIT:8.20 (00:45.28) / SP:08.25 (08.25)	32.85
80	Tim Stutz	2006	Trüllikon	STH:7.00 (20) / KU:8.80 (6.76) / FIT:8.95 (00:40.78) / ZW:8.00 (12)	32.75

Rang	Person	Jg	Verein	Leistungen	Total
80	Lars Gautschi	2006	Henggart	HW:7.10 (0.75) / SL:8.90 (00:12.72) / ZW:9.25 (17) / SP:07.50 (07.50)	32.75
82	Sandro Menzi	2006	Stammertal	BO:08.20 (08.20) / SL:8.10 (00:14.22) / KU:8.20 (5.47) / SP:08.00 (08.00)	32.50
83	Jimmy Hofer	2005	Wiesendangen	BO:08.35 (08.35) / WE:7.60 (2.60) / KU:8.80 (6.60) / SP:07.70 (07.70)	32.45
84	Dennis Giezendanner	2006	Seuzach	BO:08.50 (08.50) / SL:8.00 (00:14.47) / FIT:8.35 (00:44.35) / ZW:7.50 (10)	32.35
85	Yannik Spicher	2006	Räterschen	BO:08.25 (08.25) / WE:8.00 (2.93) / SL:8.00 (00:14.46) / ZW:8.00 (12)	32.25
86	Loris Noll	2006	Seuzach	BO:08.70 (08.70) / SL:7.00 (00:16.37) / FIT:8.35 (00:44.47) / ZW:8.00 (12)	32.05
	Leonardo Brand	2005	Henggart	BO:08.60 (08.60) / HW:7.70 (0.85) / KU:7.50 (4.15) / ZW:8.25 (13)	32.05
	Vincent Rüedi	2006	Rheinau	HW:7.70 (0.85) / SL:9.10 (00:12.53) / ZW:7.25 (09) / SP:08.00 (08.00)	32.05
	Arne Schöniß	2005	Hegi	BO:08.55 (08.55) / WE:7.90 (2.87) / SL:7.60 (00:15.10) / ZW:8.00 (12)	32.05
90	Shannon Herter	2006	Hegi	BO:08.70 (08.70) / WE:8.30 (3.15) / SL:8.00 (00:14.34) / ZW:6.75 (07)	31.75
91	Silvan Aregger	2006	Neftenbach	STH:6.50 (06) / SL:8.10 (00:14.10) / KU:7.80 (4.70) / ZW:9.25 (17)	31.65
92	Fin Mattick	2006	Pfungen	HW:7.70 (0.85) / SL:7.70 (00:14.93) / FIT:8.65 (00:42.91) / ZW:7.50 (10)	31.55
	Gurkirat Janjua	2005	Hegi	BO:08.65 (08.65) / WE:8.00 (2.91) / SL:7.40 (00:15.59) / ZW:7.50 (10)	31.55
94	Jelle Beutler	2005	Rickenbach	BO:07.10 (07.10) / WE:7.60 (2.64) / SL:8.30 (00:13.83) / FIT:8.50 (00:43.41)	31.50
95	Sascha Baumgartner	2005	Henggart	BO:08.30 (08.30) / WE:7.40 (2.48) / KU:8.10 (5.29) / SP:07.55 (07.55)	31.35
96	Maurus Stroppel	2005	Seuzach	BO:08.00 (08.00) / SL:6.90 (00:16.53) / FIT:7.90 (00:47.69) / ZW:8.50 (14)	31.30
	Yanic Yesildag	2006	Hegi	BO:08.20 (08.20) / WE:7.30 (2.35) / SL:7.00 (00:16.35) / FIT:8.80 (00:41.56)	31.30
98	Stefan Koch	2006	Räterschen	BO:07.40 (07.40) / SL:6.70 (00:16.91) / FIT:8.35 (00:44.19) / ZW:8.25 (13)	30.70
99	Jonas Fritsche	2006	Hegi	BO:08.05 (08.05) / WE:7.60 (2.58) / SL:7.00 (00:16.35) / ZW:8.00 (12)	30.65
100	Diego Zumbo	2006	Henggart	BO:07.40 (07.40) / FIT:6.85 (00:54.25) / ZW:7.75 (11) / SP:07.70 (07.70)	29.70
101	Joel Meyer	2005	Brütten	SL:6.50 (00:17.72) / FIT:8.20 (00:45.15) / ZW:8.00 (12) / SP:06.85 (06.85)	29.55
102	Janis Möckli	2006	Hegi	BO:07.75 (07.75) / WE:7.00 (2.13) / SL:6.80 (00:16.84) / ZW:6.75 (07)	28.30

Allround

I (Knaben)

Rang	Person	Jg	Verein	Leistungen	Total
1	Matteo Engler	2007	Stammertal	HW:10.00 (1.10) / WE:10.00 (3.86) / SL:9.80 (00:09.68) / SP:09.70 (09.70)	39.50 G
2	Fabio Fuhrer	2007	Buch am Irchel	STH:10.00 (35) / KU:9.80 (5.98) / FIT:9.85 (00:36.44) / SP:09.80 (09.80)	39.45 S
3	Fabian Schriber	2007	Pfungen	HW:10.00 (1.05) / SL:9.80 (00:09.69) / FIT:10.00 (00:32.34) / ZW:9.50 (16)	39.30 B
4	Fabian Zähniger	2008	Hegi	BO:09.75 (09.75) / SL:9.40 (00:10.47) / FIT:9.70 (00:37.28) / SP:10.00 (10.00)	38.85 *
5	Fabian Kunz	2007	Seuzach	BO:09.50 (09.50) / FIT:9.70 (00:37.47) / ZW:9.75 (17) / BA:09.70 (09.70)	38.65 *
	Janis Frei	2007	Stammertal	STH:10.00 (35) / SL:9.70 (00:09.85) / KU:9.30 (4.97) / SP:09.65 (09.65)	38.65 *
7	Luca Tanner	2007	Stammertal	HW:10.00 (1.05) / WE:9.20 (3.35) / SL:9.60 (00:10.10) / SP:09.65 (09.65)	38.45 *
8	Gian Bächli	2008	Seuzach	BO:09.10 (09.10) / SL:9.60 (00:10.00) / FIT:9.70 (00:37.16) / ZW:10.00 (18)	38.40 *
9	Jan Maurer	2007	Trüllikon	HW:8.90 (0.90) / SL:9.40 (00:10.40) / FIT:10.00 (00:35.34) / ZW:10.00 (18)	38.30 *
10	Leon Schnellmann	2007	Brütten	WE:9.20 (3.35) / SL:9.40 (00:10.50) / FIT:10.00 (00:35.34) / SP:09.60 (09.60)	38.20 *
11	Gian Oehri	2008	Brütten	HW:8.90 (0.90) / WE:9.30 (3.41) / SL:9.90 (00:09.51) / FIT:10.00 (00:34.50)	38.10 *
12	Lino Klemke	2007	Oberwinterthur	HW:9.20 (0.95) / SL:9.70 (00:09.94) / FIT:10.00 (00:35.09) / SP:09.15 (09.15)	38.05 *
13	Miro Moubarak	2007	Flurlingen	HW:8.90 (0.90) / SL:9.10 (00:11.06) / FIT:10.00 (00:34.91) / ZW:10.00 (19)	38.00 *
14	Alexander Müller	2008	Hegi	BO:09.65 (09.65) / SL:9.00 (00:11.15) / FIT:9.40 (00:39.66) / BA:09.90 (09.90)	37.95 *
15	Rafael Blöchliger	2008	Brütten	HW:8.90 (0.90) / WE:9.40 (3.45) / SL:9.60 (00:10.00) / FIT:10.00 (00:34.43)	37.90 *
	Marc Schär	2007	Stammertal	HW:9.60 (1.00) / WE:9.30 (3.43) / SL:9.50 (00:10.31) / ZW:9.50 (16)	37.90 *
	Nathanael Zurbrügg	2007	Henggart	HW:8.90 (0.90) / SL:9.40 (00:10.56) / FIT:9.85 (00:36.84) / SP:09.75 (09.75)	37.90 *
18	Andrin Rüegg	2007	Seuzach	BO:09.10 (09.10) / SL:9.30 (00:10.60) / FIT:9.25 (00:40.97) / SP:10.00 (10.00)	37.65 *
19	Jaden Waldvogel	2008	Seuzach	BO:09.10 (09.10) / SL:9.50 (00:10.25) / FIT:9.40 (00:39.81) / BA:09.45 (09.45)	37.45 *
	Lorin Forster	2007	Pfungen	HW:9.20 (0.95) / SL:9.50 (00:10.34) / FIT:10.00 (00:34.75) / ZW:8.75 (13)	37.45 *
	David Ramirez	2007	Pfungen	HW:9.20 (0.95) / SL:9.50 (00:10.37) / FIT:10.00 (00:33.34) / ZW:8.75 (13)	37.45 *
22	Ali Hakimi	2007	Rheinau	BO:09.10 (09.10) / SL:9.20 (00:10.90) / FIT:9.10 (00:41.25) / ZW:10.00 (18)	37.40 *
	Gian Zuzak	2007	Flurlingen	HW:8.90 (0.90) / SL:9.00 (00:11.13) / FIT:10.00 (00:34.53) / ZW:9.50 (16)	37.40 *
24	Lenny Martin	2007	Oberwinterthur	BO:09.25 (09.25) / SL:9.40 (00:10.48) / SS:9.70 (135) / SP:09.00 (09.00)	37.35 *
25	Silvan Käser	2008	Räterschen	BO:09.45 (09.45) / FIT:9.25 (00:40.13) / ZW:9.00 (14) / SP:09.55 (09.55)	37.25 *
26	Kris Spiess	2007	Trüllikon	HW:8.90 (0.90) / SL:9.40 (00:10.59) / FIT:9.40 (00:39.47) / ZW:9.50 (16)	37.20 *
	Luis Brunet	2007	Buch am Irchel	BO:09.25 (09.25) / SL:9.20 (00:10.93) / FIT:9.40 (00:39.34) / SP:09.35 (09.35)	37.20 *
28	Andrin Steiner	2007	Ossingen	BO:09.00 (09.00) / SL:9.20 (00:10.93) / FIT:9.70 (00:37.97) / ZW:9.25 (15)	37.15 *
29	Michele Congiusti	2007	Oberwinterthur	HW:9.20 (0.95) / KU:9.50 (5.26) / FIT:9.85 (00:36.91) / SP:08.55 (08.55)	37.10 *
30	Pius Schmid	2008	Wiesendangen	BO:09.15 (09.15) / WE:8.70 (3.00) / SL:9.30 (00:10.69) / SP:09.80 (09.80)	36.95 *
	Teijo Greuter	2007	Rickenbach	BO:07.70 (07.70) / SL:9.70 (00:09.88) / KU:9.70 (5.78) / FIT:9.85 (00:36.97)	36.95 *
32	Joab Friess	2008	Hofstetten	HW:8.90 (0.90) / WE:8.80 (3.04) / SL:9.30 (00:10.62) / FIT:9.85 (00:36.19)	36.85 *
	Nino Schurter	2008	Buch am Irchel	BO:08.55 (08.55) / SL:9.40 (00:10.50) / FIT:9.10 (00:41.28) / SP:09.80 (09.80)	36.85 *
	Luis Hugli	2008	Pfungen	HW:8.30 (0.80) / SL:9.30 (00:10.66) / FIT:10.00 (00:34.40) / ZW:9.25 (15)	36.85 *
35	Livio Schurter	2008	Buch am Irchel	BO:08.90 (08.90) / SL:9.40 (00:10.56) / FIT:9.85 (00:36.22) / BA:08.60 (08.60)	36.75 *
	Sindri Greuter	2008	Rickenbach	BO:09.00 (09.00) / SL:9.40 (00:10.40) / KU:9.40 (5.16) / FIT:8.95 (00:42.19)	36.75 *
37	Daniel Viana	2008	Wiesendangen	BO:08.70 (08.70) / WE:8.60 (2.91) / SL:9.40 (00:10.50) / SP:10.00 (10.00)	36.70 *
	Nino Forster	2007	Rheinau	WE:8.60 (2.81) / SL:9.00 (00:11.16) / FIT:9.40 (00:39.06) / SP:09.70 (09.70)	36.70 *
	Levin Bühler	2008	Brütten	HW:8.90 (0.90) / SL:8.70 (00:11.50) / FIT:9.70 (00:37.81) / SP:09.40 (09.40)	36.70 *

Rang	Person	Jg	Verein	Leistungen	Total
40	Gian Wirth	2008	Pfungen	HW:9.60 (1.00) / SL:9.60 (00:10.15) / FIT:9.10 (00:41.19) / ZW:8.25 (11)	36.55 *
	Nevio Dauru	2008	Buch am Irchel	BO:08.70 (08.70) / KU:9.10 (4.58) / FIT:9.10 (00:41.25) / SP:09.65 (09.65)	36.55 *
42	Gian Ris	2007	Neftenbach	HW:8.60 (0.85) / SL:9.70 (00:09.89) / FIT:9.40 (00:39.75) / SP:08.80 (08.80)	36.50 *
	Andrin Schwarz	2007	Stammertal	BO:08.90 (08.90) / WE:9.10 (3.28) / SL:9.60 (00:10.10) / SP:08.90 (08.90)	36.50 *
44	Neo Derungs	2008	Flurlingen	HW:8.30 (0.80) / SL:9.20 (00:10.91) / FIT:9.70 (00:37.09) / ZW:9.25 (15)	36.45 *
	Lukas Ritter	2007	Rheinau	WE:8.60 (2.80) / FIT:10.00 (00:35.15) / ZW:8.75 (13) / SP:09.10 (09.10)	36.45 *
	Sascha Buchwalder	2008	Pfungen	HW:9.20 (0.95) / SL:9.30 (00:10.75) / FIT:9.70 (00:37.28) / ZW:8.25 (11)	36.45 *
47	Gian Frei	2007	Neftenbach	BO:08.70 (08.70) / WE:8.60 (2.88) / SL:9.40 (00:10.40) / FIT:9.70 (00:37.50)	36.40 *
	Till Meier	2007	Wiesendangen	BO:08.65 (08.65) / WE:9.00 (3.23) / SL:9.40 (00:10.56) / SP:09.35 (09.35)	36.40 *
49	Noél Lienhard	2007	Stammertal	HW:9.20 (0.95) / WE:8.90 (3.12) / SL:9.50 (00:10.29) / ZW:8.75 (13)	36.35 *
	Dario Leu	2008	Trüllikon	HW:8.60 (0.85) / SL:9.50 (00:10.32) / FIT:9.25 (00:40.75) / ZW:9.00 (14)	36.35 *
51	Kevin Amstutz	2007	Neftenbach	HW:8.60 (0.85) / SL:9.40 (00:10.59) / FIT:9.55 (00:38.05) / ZW:8.75 (13)	36.30
52	Joshua Erzberger	2008	Stammertal	WE:8.60 (2.86) / SL:9.50 (00:10.31) / ZW:9.25 (15) / SP:08.85 (08.85)	36.20
53	Maurus Merk	2008	Trüllikon	HW:8.60 (0.85) / SL:8.70 (00:11.56) / FIT:9.55 (00:38.59) / ZW:9.25 (15)	36.10
	Alex Wehrli	2007	Trüllikon	HW:8.30 (0.80) / SL:9.30 (00:10.66) / FIT:9.25 (00:40.12) / ZW:9.25 (15)	36.10
	Morgan Falcucci	2008	Rickenbach	BO:08.45 (08.45) / SL:9.30 (00:10.63) / KU:9.10 (4.56) / FIT:9.25 (00:40.81)	36.10
56	Marius Maier	2007	Räterschen	BO:08.65 (08.65) / SL:9.00 (00:11.15) / FIT:9.40 (00:39.43) / ZW:9.00 (14)	36.05
57	Nico Hanselmann	2007	Wiesendangen	BO:08.30 (08.30) / WE:8.70 (3.00) / SL:9.50 (00:10.25) / SP:09.50 (09.50)	36.00
58	Lukas Aggeler	2007	Henggart	HW:8.60 (0.85) / WE:8.90 (3.18) / SL:9.20 (00:10.90) / ZW:9.25 (15)	35.95
59	Fabio Kyburz	2007	Flurlingen	HW:8.30 (0.80) / SL:8.40 (00:12.06) / FIT:9.70 (00:37.69) / ZW:9.50 (16)	35.90
60	Loris Hafner	2007	Brütten	HW:8.90 (0.90) / WE:8.40 (2.77) / SL:8.90 (00:11.25) / FIT:9.55 (00:38.53)	35.75
61	Fabian Niggli	2008	Trüllikon	HW:8.90 (0.90) / SL:9.50 (00:10.37) / FIT:8.80 (00:43.00) / ZW:8.50 (12)	35.70
62	Meo Hintermeister	2008	Rickenbach	BO:08.10 (08.10) / SL:9.30 (00:10.75) / KU:9.00 (4.33) / FIT:9.25 (00:40.35)	35.65
	Rodrick Schächli	2007	Henggart	HW:7.70 (0.70) / SL:8.70 (00:11.47) / ZW:9.50 (16) / SP:09.75 (09.75)	35.65
	Malte Thomsen	2007	Henggart	HW:8.00 (0.75) / SL:9.10 (00:11.06) / FIT:9.55 (00:38.97) / SP:09.00 (09.00)	35.65
	Nevio Calabresi	2008	Buch am Irchel	BO:08.35 (08.35) / WE:8.60 (2.85) / SL:9.20 (00:10.98) / SP:09.50 (09.50)	35.65
66	Valentin Erny	2008	Brütten	HW:8.30 (0.80) / SL:9.30 (00:10.69) / KU:8.60 (3.86) / FIT:9.40 (00:39.19)	35.60
	Samuel Egli	2007	Ossingen	BO:08.60 (08.60) / WE:8.70 (2.99) / SL:9.30 (00:10.78) / ZW:9.00 (14)	35.60
68	Fabian Leuenberger	2008	Räterschen	BO:09.05 (09.05) / SL:8.40 (00:12.15) / FIT:9.10 (00:41.82) / ZW:9.00 (14)	35.55
	Valentin Schnettler	2008	Henggart	BO:08.80 (08.80) / SL:8.40 (00:12.00) / FIT:9.10 (00:41.38) / SP:09.25 (09.25)	35.55
70	Dominik Koch	2008	Wiesendangen	BO:08.50 (08.50) / WE:8.70 (2.98) / SL:8.80 (00:11.31) / SP:09.50 (09.50)	35.50
	Janick Baur	2007	Wiesendangen	BO:08.45 (08.45) / WE:8.60 (2.85) / SL:9.20 (00:10.81) / SP:09.25 (09.25)	35.50
	Nils Ulmann	2008	Räterschen	BO:08.95 (08.95) / SL:9.00 (00:11.13) / FIT:9.55 (00:38.72) / ZW:8.00 (10)	35.50
73	Pascal Schenk	2007	Ossingen	BO:08.80 (08.80) / WE:8.30 (2.70) / FIT:9.55 (00:38.75) / ZW:8.75 (13)	35.40
74	Simon Kiser	2007	Seuzach	BO:07.90 (07.90) / SL:8.90 (00:11.22) / FIT:9.55 (00:38.88) / ZW:9.00 (14)	35.35
75	Fabian Frei	2008	Wiesendangen	BO:08.50 (08.50) / WE:8.60 (2.88) / SL:9.10 (00:11.09) / SP:09.05 (09.05)	35.25
	Kevin Haltiner	2007	Henggart	HW:8.90 (0.90) / WE:8.60 (2.87) / FIT:8.95 (00:42.94) / SP:08.80 (08.80)	35.25
	Lukas Oblasser	2007	Buch am Irchel	BO:08.50 (08.50) / WE:8.60 (2.95) / FIT:9.10 (00:41.56) / SP:09.05 (09.05)	35.25
78	Silvan Jegher	2008	Brütten	WE:8.60 (2.85) / SL:8.50 (00:11.95) / FIT:9.55 (00:38.84) / SP:08.50 (08.50)	35.15
79	Ron Steinmann	2008	Brütten	HW:8.60 (0.85) / SL:9.10 (00:11.06) / KU:8.30 (3.50) / FIT:9.10 (00:41.68)	35.10
	Pascal Meier	2007	Neftenbach	HW:8.30 (0.80) / WE:8.80 (3.06) / SL:9.50 (00:10.27) / ZW:8.50 (12)	35.10

Rang	Person	Jg	Verein	Leistungen	Total
81	Daniel Rodriguez	2008	Henggart	HW:7.70 (0.70) / SL:9.30 (00:10.69) / FIT:9.55 (00:38.97) / ZW:8.50 (12)	35.05
82	Lauro Matter	2008	Wiesendangen	BO:08.50 (08.50) / WE:8.40 (2.72) / SL:8.70 (00:11.56) / SP:09.40 (09.40)	35.00
	Noah Kramer	2007	Buch am Irchel	BO:08.80 (08.80) / STH:7.00 (20) / KU:9.60 (5.59) / SP:09.60 (09.60)	35.00
	Tim Zürcher	2007	Seuzach	BO:08.00 (08.00) / SL:9.00 (00:11.18) / FIT:9.25 (00:40.84) / ZW:8.75 (13)	35.00
	Lukas Wackerl	2008	Pfungen	HW:8.00 (0.75) / SL:9.00 (00:11.19) / FIT:9.25 (00:40.63) / ZW:8.75 (13)	35.00
86	Henry Graber	2008	Hegi	BO:08.55 (08.55) / WE:8.30 (2.70) / SL:9.10 (00:11.01) / FIT:8.95 (00:42.47)	34.90
	Cedric Moser	2007	Seuzach	BO:08.80 (08.80) / SL:8.50 (00:11.94) / FIT:9.10 (00:41.75) / ZW:8.50 (12)	34.90
	Marco Schmid	2008	Benken	STH:10.00 (35) / WE:7.90 (2.36) / ZW:8.50 (12) / SP:08.50 (08.50)	34.90
89	Davide Gorgone	2007	Pfungen	HW:8.00 (0.75) / SL:8.80 (00:11.38) / FIT:9.55 (00:38.85) / ZW:8.50 (12)	34.85
90	Jamie-Ray Franschitz	2008	Pfungen	HW:8.30 (0.80) / SL:8.50 (00:11.84) / FIT:9.40 (00:39.31) / ZW:8.50 (12)	34.70
	Joel Gautschi	2008	Henggart	HW:7.70 (0.70) / WE:8.30 (2.66) / FIT:9.70 (00:37.75) / ZW:9.00 (14)	34.70
	Simon Schrüfer	2008	Wiesendangen	BO:08.10 (08.10) / WE:8.20 (2.58) / SL:9.00 (00:11.15) / SP:09.40 (09.40)	34.70
93	Marc Schiess	2007	Benken	STH:6.50 (05) / SL:9.70 (00:09.81) / ZW:9.25 (15) / SP:09.20 (09.20)	34.65
	Samuel Langhard	2007	Stammertal	SL:9.80 (00:09.61) / KU:9.10 (4.48) / ZW:8.00 (10) / BA:07.75 (07.75)	34.65
	Dennis von Euw	2008	Oberwinterthur	BO:07.60 (07.60) / SL:9.40 (00:10.58) / FIT:9.25 (00:40.66) / SP:08.40 (08.40)	34.65
96	Mateja Brandenberger	2008	Stammertal	HW:8.30 (0.80) / SL:8.90 (00:11.28) / ZW:9.00 (14) / SP:08.40 (08.40)	34.60
	Nevio Bernardin	2007	Buch am Irchel	BO:08.45 (08.45) / WE:8.30 (2.70) / SL:8.50 (00:11.87) / SP:09.35 (09.35)	34.60
98	Joel Beck	2007	Hegi	BO:08.40 (08.40) / WE:8.80 (3.05) / SL:8.70 (00:11.50) / ZW:8.50 (12)	34.40
99	Marc Bircher	2008	Brütten	HW:8.30 (0.80) / SL:9.10 (00:11.03) / KU:8.00 (3.26) / FIT:8.95 (00:42.06)	34.35
100	Levin von Känel	2008	Neftenbach	BO:08.15 (08.15) / HW:8.60 (0.85) / SL:9.30 (00:10.76) / ZW:8.25 (11)	34.30
101	Mika-Leon Lötscher	2008	Flurlingen	HW:8.90 (0.90) / SL:8.40 (00:12.00) / FIT:8.95 (00:42.19) / ZW:8.00 (10)	34.25
102	Marc Greuter	2007	Wiesendangen	BO:07.70 (07.70) / WE:8.20 (2.58) / SL:9.20 (00:10.85) / SP:09.10 (09.10)	34.20
	Fabian Wiederkehr	2008	Neftenbach	HW:8.30 (0.80) / SL:9.60 (00:10.16) / FIT:8.80 (00:43.63) / ZW:7.50 (08)	34.20
104	Tanish Acharya	2008	Brütten	HW:8.00 (0.75) / FIT:8.80 (00:43.69) / ZW:8.75 (13) / SP:08.60 (08.60)	34.15
105	Elias Senn	2008	Hegi	BO:08.60 (08.60) / WE:8.10 (2.53) / SL:8.30 (00:12.35) / FIT:9.10 (00:41.56)	34.10
106	Finn Wagner	2007	Hegi	BO:08.40 (08.40) / WE:8.70 (3.02) / SL:8.70 (00:11.59) / ZW:8.25 (11)	34.05
	Denis Kuhn	2008	Brütten	HW:8.30 (0.80) / WE:8.20 (2.63) / SL:8.90 (00:11.25) / FIT:8.65 (00:44.75)	34.05
108	Marc Ott	2008	Henggart	HW:7.70 (0.70) / KU:9.00 (4.32) / ZW:8.50 (12) / SP:08.70 (08.70)	33.90
109	Hannes Ledermann	2008	Räterschen	BO:08.55 (08.55) / SL:8.10 (00:12.75) / FIT:8.05 (00:48.09) / ZW:9.00 (14)	33.70
110	Eman Kifle	2007	Räterschen	BO:07.50 (07.50) / SL:9.50 (00:10.28) / FIT:8.35 (00:46.66) / ZW:8.25 (11)	33.60
111	Nathan Styger	2008	Flurlingen	HW:8.00 (0.75) / SL:8.50 (00:11.91) / FIT:8.80 (00:43.38) / ZW:8.25 (11)	33.55
112	Remo Kapatos	2008	Rickenbach	BO:07.55 (07.55) / SL:8.40 (00:12.10) / KU:8.70 (3.93) / FIT:8.80 (00:43.65)	33.45
113	Yannis Lüchinger	2008	Hegi	BO:07.45 (07.45) / WE:8.10 (2.55) / SL:9.20 (00:10.91) / FIT:8.65 (00:44.09)	33.40
114	Jannik Langhart	2008	Stammertal	HW:8.00 (0.75) / SL:9.20 (00:10.98) / ZW:7.25 (07) / SP:08.65 (08.65)	33.10
115	Damiano Sherif	2008	Stammertal	HW:7.70 (0.70) / SL:9.00 (00:11.12) / ZW:7.00 (06) / SP:09.30 (09.30)	33.00
116	Jan Heiniger	2008	Neftenbach	HW:8.00 (0.75) / SL:8.70 (00:11.59) / FIT:8.50 (00:45.44) / ZW:7.75 (09)	32.95
117	Simon Kläui	2008	Seuzach	BO:08.00 (08.00) / SL:8.30 (00:12.25) / FIT:8.05 (00:48.50) / ZW:8.50 (12)	32.85
118	Yves Bagnasco	2008	Neftenbach	HW:7.70 (0.70) / SL:8.70 (00:11.46) / FIT:8.80 (00:43.19) / ZW:7.50 (08)	32.70
119	Maximilian Kleiner	2007	Trüllikon	HW:7.40 (0.65) / SL:8.20 (00:12.59) / FIT:9.10 (00:41.88) / ZW:7.75 (09)	32.45
120	Bilal El Hinnawy	2008	Neftenbach	HW:7.70 (0.70) / SL:8.30 (00:12.28) / FIT:8.65 (00:44.75) / ZW:7.75 (09)	32.40
121	Hamzah El Hinnawy	2008	Neftenbach	HW:8.30 (0.80) / SL:8.40 (00:12.03) / FIT:7.60 (00:51.53) / ZW:8.00 (10)	32.30

Rang	Person	Jg	Verein	Leistungen	Total
121	Sylvan Styger	2008	Flurlingen	HW:7.40 (0.65) / SL:8.50 (00:11.88) / FIT:7.90 (00:49.53) / ZW:8.50 (12)	32.30
123	Janik Meyer	2008	Brütten	HW:7.40 (0.65) / WE:8.20 (2.56) / SL:8.30 (00:12.26) / ZW:8.25 (11)	32.15
124	Tim Jaschke	2007	Benken	STH:6.50 (15) / WE:8.30 (2.66) / FIT:8.95 (00:42.37) / SP:08.10 (08.10)	31.85
125	Daniel Vollenweider	2008	Pfungen	HW:7.40 (0.65) / SL:7.00 (00:14.85) / FIT:8.50 (00:45.38) / ZW:8.25 (11)	31.15
126	Sofian El Hinnawy	2008	Neftenbach	HW:6.80 (0.55) / SL:7.80 (00:13.34) / FIT:6.55 (00:59.69) / ZW:7.00 (06)	28.15

Allround

K (Knaben)

Rang	Person	Jg	Verein	Leistungen	Total
1	Finn Wäckerlin	2009	Brütten	WE:9.20 (2.82) / SL:9.80 (00:10.69) / FIT:10.00 (00:36.09) / SP:10.00 (10.00)	39.00 G
2	Denis Anders	2009	Flurlingen	HW:8.90 (0.80) / SL:9.80 (00:10.69) / FIT:10.00 (00:33.50) / ZW:10.00 (16)	38.70 S
3	Marc Rindlisbacher	2010	Ossingen	BO:08.65 (08.65) / WE:10.00 (3.40) / SL:10.00 (00:09.82) / ZW:10.00 (16)	38.65 B
4	Yannik Frei	2009	Rheinau	BO:09.20 (09.20) / SL:9.90 (00:10.40) / BA:09.55 (09.55) / SP:09.90 (09.90)	38.55 *
5	Janick Ramp	2009	Hegi	BO:09.00 (09.00) / WE:9.80 (3.23) / SL:10.00 (00:10.14) / FIT:9.70 (00:39.13)	38.50 *
6	Marwin Schumacher	2009	Wiesendangen	BO:08.85 (08.85) / WE:9.70 (3.14) / SL:10.00 (00:10.01) / SP:09.80 (09.80)	38.35 *
7	Moritz Wiesmann	2009	Brütten	BO:09.15 (09.15) / FIT:9.70 (00:39.31) / BA:09.90 (09.90) / SP:09.55 (09.55)	38.30 *
8	Pascal Brogle	2009	Flurlingen	HW:8.30 (0.70) / SL:10.00 (00:10.10) / FIT:9.85 (00:38.88) / ZW:10.00 (16)	38.15 *
9	Dennis Beck	2009	Hegi	BO:08.75 (08.75) / FIT:10.00 (00:36.81) / BA:09.70 (09.70) / SP:09.65 (09.65)	38.10 *
10	Yannik Müller	2010	Stammertal	HW:8.90 (0.80) / SL:9.40 (00:11.59) / ZW:10.00 (16) / SP:09.60 (09.60)	37.90 *
	Eloa Braunwalder	2009	Rheinau	SL:9.70 (00:10.98) / FIT:9.55 (00:40.32) / ZW:9.75 (14) / SP:08.90 (08.90)	37.90 *
12	Flurin Bürgis	2009	Hegi	BO:08.10 (08.10) / FIT:10.00 (00:37.82) / BA:09.90 (09.90) / SP:09.80 (09.80)	37.80 *
13	Leandro Duarte	2009	Brütten	HW:9.20 (0.85) / WE:9.60 (3.05) / SL:9.70 (00:10.85) / FIT:9.10 (00:43.41)	37.60 *
	Neilo Stuker	2011	Hegi	BO:09.55 (09.55) / FIT:9.25 (00:42.78) / BA:09.30 (09.30) / SP:09.50 (09.50)	37.60 *
15	Killian Thur	2010	Pfungen	HW:8.60 (0.75) / SL:9.90 (00:10.59) / FIT:9.55 (00:40.31) / ZW:9.50 (13)	37.55 *
16	Lino Bühler	2009	Brütten	BO:08.70 (08.70) / FIT:9.70 (00:39.94) / BA:09.50 (09.50) / SP:09.50 (09.50)	37.40 *
17	Benedek Bösze	2010	Hegi	BO:09.20 (09.20) / FIT:9.10 (00:43.44) / BA:09.45 (09.45) / SP:09.45 (09.45)	37.20 *
18	Matthias Forster	2009	Trüllikon	HW:8.90 (0.80) / SL:9.50 (00:11.30) / FIT:9.25 (00:42.53) / ZW:9.50 (13)	37.15 *
19	Timo Salzinger	2009	Hegi	BO:08.75 (08.75) / WE:9.30 (2.90) / SL:9.50 (00:11.39) / FIT:9.55 (00:40.91)	37.10 *
20	Lennis Wirz	2009	Pfungen	HW:8.90 (0.80) / SL:9.60 (00:11.19) / FIT:9.55 (00:40.90) / ZW:9.00 (11)	37.05 *
21	Ramon Cabarrubia	2009	Räterschen	BO:09.00 (09.00) / SL:8.70 (00:12.26) / FIT:9.70 (00:39.44) / ZW:9.50 (13)	36.90 *
22	Severin Spicher	2009	Räterschen	BO:07.95 (07.95) / SL:9.50 (00:11.32) / FIT:9.40 (00:41.59) / ZW:9.75 (14)	36.60 *
23	Gian Rütimann	2010	Pfungen	HW:8.60 (0.75) / SL:8.80 (00:12.15) / FIT:9.40 (00:41.40) / ZW:9.75 (14)	36.55 *
	Dario Gänsicke	2009	Pfungen	HW:9.20 (0.85) / SL:9.30 (00:11.60) / FIT:9.55 (00:40.69) / ZW:8.50 (09)	36.55 *
25	Dominik Notz	2010	Ossingen	BO:08.60 (08.60) / WE:8.90 (2.65) / SL:9.20 (00:11.75) / ZW:9.75 (14)	36.45 *
26	Gian Ganster	2010	Hegi	BO:09.50 (09.50) / FIT:8.65 (00:46.69) / BA:09.40 (09.40) / SP:08.85 (08.85)	36.40 *
27	Kyle Kurt	2010	Pfungen	HW:8.30 (0.70) / SL:9.60 (00:11.04) / FIT:9.55 (00:40.88) / ZW:8.75 (10)	36.20 *
	Joris Baumann	2009	Neftenbach	HW:8.30 (0.70) / SL:9.70 (00:10.97) / FIT:9.70 (00:39.15) / ZW:8.50 (09)	36.20 *
29	Ryan Gilg	2009	Seuzach	BO:08.40 (08.40) / SL:9.20 (00:11.71) / FIT:9.25 (00:42.72) / BA:09.30 (09.30)	36.15 *
	Lukas Christen	2009	Buch am Irchel	BO:08.70 (08.70) / WE:8.80 (2.60) / SL:9.10 (00:11.81) / SP:09.55 (09.55)	36.15 *
	Timon Forster	2010	Pfungen	HW:8.30 (0.70) / SL:9.20 (00:11.75) / FIT:9.40 (00:41.81) / ZW:9.25 (12)	36.15 *
32	Lenn Watzlaw	2009	Seuzach	BO:08.15 (08.15) / SL:9.80 (00:10.65) / FIT:9.40 (00:41.28) / ZW:8.75 (10)	36.10 *
33	Janik Huber	2009	Seuzach	BO:08.20 (08.20) / SL:9.40 (00:11.56) / FIT:8.80 (00:45.53) / SP:09.65 (09.65)	36.05 *
	Eric Adler	2009	Seuzach	BO:08.15 (08.15) / SL:9.50 (00:11.34) / FIT:9.40 (00:41.06) / ZW:9.00 (11)	36.05 *
	Marco Ritter	2009	Trüllikon	HW:8.60 (0.75) / SL:9.60 (00:11.00) / FIT:9.85 (00:38.84) / ZW:8.00 (07)	36.05 *
36	Janis Manz	2009	Seuzach	BO:08.15 (08.15) / SL:9.00 (00:11.97) / FIT:9.40 (00:41.21) / SP:09.45 (09.45)	36.00 *
37	Joel Kreder	2009	Brütten	HW:8.00 (0.65) / WE:9.00 (2.72) / SL:9.80 (00:10.78) / FIT:9.10 (00:43.72)	35.90 *
38	Severin Allemann	2011	Pfungen	HW:8.60 (0.75) / SL:9.20 (00:11.75) / FIT:9.55 (00:40.19) / ZW:8.50 (09)	35.85
	Sebastian Zähninger	2011	Hegi	BO:09.10 (09.10) / FIT:9.10 (00:43.57) / BA:08.40 (08.40) / SP:09.25 (09.25)	35.85

Rang	Person	Jg	Verein	Leistungen	Total
40	Norwin Wiesendanger	2009	Seuzach	BO:07.85 (07.85) / SL:9.10 (00:11.88) / FIT:9.25 (00:42.34) / ZW:9.50 (13)	35.70
41	Jules Zurbrügg	2010	Henggart	WE:8.60 (2.36) / SL:8.80 (00:12.13) / FIT:9.25 (00:42.47) / SP:09.00 (09.00)	35.65
42	Mischa Kramer	2009	Buch am Irchel	BO:08.40 (08.40) / SL:8.70 (00:12.38) / FIT:9.10 (00:43.53) / SP:09.40 (09.40)	35.60
	Liam Dimmler	2009	Buch am Irchel	BO:08.70 (08.70) / SL:9.10 (00:11.85) / FIT:8.80 (00:45.09) / SP:09.00 (09.00)	35.60
44	Gabriel Aventaggiato	2009	Neftenbach	HW:8.30 (0.70) / SL:9.50 (00:11.28) / FIT:9.25 (00:42.43) / ZW:8.50 (09)	35.55
45	Robin Berger	2009	Buch am Irchel	WE:8.90 (2.69) / SL:9.20 (00:11.75) / FIT:8.65 (00:46.16) / SP:08.75 (08.75)	35.50
46	Kai Steinacher	2010	Trüllikon	HW:8.30 (0.70) / SL:9.30 (00:11.66) / FIT:9.10 (00:43.50) / ZW:8.75 (10)	35.45
47	Dario Winkler	2010	Henggart	BO:07.90 (07.90) / SL:8.70 (00:12.35) / FIT:9.55 (00:40.59) / ZW:9.25 (12)	35.40
48	Vincent Leumann	2009	Stammertal	HW:8.30 (0.70) / SL:9.50 (00:11.31) / ZW:9.25 (12) / SP:08.20 (08.20)	35.25
49	Cyril Langhard	2009	Wiesendangen	BO:08.30 (08.30) / WE:8.60 (2.37) / SL:9.30 (00:11.64) / SP:09.00 (09.00)	35.20
	Mirco Thalmann	2009	Wiesendangen	BO:08.70 (08.70) / WE:8.60 (2.42) / SL:8.50 (00:12.60) / SP:09.40 (09.40)	35.20
51	Fabian Bernegger	2009	Pfungen	HW:6.50 (0.00) / SL:9.30 (00:11.69) / FIT:9.85 (00:38.44) / ZW:9.50 (13)	35.15
	Morris Meyer	2009	Seuzach	BO:08.30 (08.30) / SL:9.30 (00:11.65) / FIT:7.90 (00:51.25) / SP:09.65 (09.65)	35.15
53	Leonardo La Nave	2010	Ossingen	BO:07.70 (07.70) / WE:8.90 (2.66) / SL:9.10 (00:11.87) / ZW:9.25 (12)	34.95
54	Lionel Fritsche	2009	Brütten	SL:8.70 (00:12.25) / KU:8.30 (2.69) / FIT:9.40 (00:41.25) / SP:08.50 (08.50)	34.90
55	Timo Baumgartner	2009	Henggart	WE:8.20 (2.10) / FIT:8.65 (00:46.69) / ZW:9.00 (11) / SP:09.00 (09.00)	34.85
56	Janosch Bilang	2009	Brütten	HW:8.00 (0.65) / FIT:9.85 (00:38.10) / ZW:8.50 (09) / SP:08.45 (08.45)	34.80
57	Max Zellweger	2009	Neftenbach	HW:7.70 (0.60) / SL:8.70 (00:12.21) / FIT:9.10 (00:43.34) / ZW:9.25 (12)	34.75
	Dario Zimiker	2010	Pfungen	HW:8.00 (0.65) / SL:9.40 (00:11.51) / FIT:9.10 (00:43.53) / ZW:8.25 (08)	34.75
	Ari Friess	2011	Hofstetten	HW:8.00 (0.65) / WE:8.70 (2.46) / SL:9.10 (00:11.80) / FIT:8.95 (00:44.78)	34.75
	Colin Zuzak	2009	Flurlingen	HW:8.00 (0.65) / SL:8.90 (00:12.00) / FIT:9.10 (00:43.04) / ZW:8.75 (10)	34.75
	Lars Bärlocher	2009	Seuzach	BO:08.20 (08.20) / SL:8.50 (00:12.78) / FIT:8.80 (00:45.69) / SP:09.25 (09.25)	34.75
62	Nik Hochuli	2009	Neftenbach	HW:8.30 (0.70) / SL:8.70 (00:12.34) / FIT:8.95 (00:44.28) / ZW:8.75 (10)	34.70
63	Nick Ott	2009	Seuzach	BO:08.50 (08.50) / SL:8.50 (00:12.63) / FIT:8.35 (00:48.25) / ZW:9.25 (12)	34.60
64	Flurin Maier	2009	Benken	STH:8.20 (26) / WE:8.80 (2.60) / FIT:9.25 (00:42.50) / SP:08.30 (08.30)	34.55
65	Levin Aschwanden	2010	Buch am Irchel	BO:08.20 (08.20) / SL:8.50 (00:12.75) / FIT:8.95 (00:44.00) / SP:08.75 (08.75)	34.40
66	Lean Mühlethaler	2009	Neftenbach	HW:8.30 (0.70) / SL:9.00 (00:11.91) / FIT:9.25 (00:42.38) / ZW:7.75 (06)	34.30
	Simone Valoti	2009	Pfungen	HW:7.40 (0.55) / SL:8.20 (00:13.34) / FIT:8.95 (00:44.34) / ZW:9.75 (14)	34.30
68	Fabio Volkart	2009	Brütten	HW:8.00 (0.65) / SL:8.40 (00:12.81) / FIT:8.65 (00:46.60) / ZW:9.00 (11)	34.05
69	Kevin Greuter	2009	Wiesendangen	BO:08.50 (08.50) / WE:8.30 (2.16) / SL:8.70 (00:12.34) / SP:08.50 (08.50)	34.00
70	Janis Gamper	2010	Seuzach	BO:07.90 (07.90) / SL:7.50 (00:14.63) / FIT:8.50 (00:47.84) / SP:10.00 (10.00)	33.90
71	Lisandro Lang	2009	Wiesendangen	BO:07.55 (07.55) / WE:7.70 (1.72) / SL:9.40 (00:11.59) / SP:09.10 (09.10)	33.75
72	Quirin Müller	2010	Neftenbach	HW:7.10 (0.50) / SL:8.70 (00:12.28) / FIT:9.40 (00:41.72) / ZW:8.50 (09)	33.70
73	Robyn Baumann	2010	Pfungen	HW:8.00 (0.65) / SL:8.70 (00:12.28) / FIT:8.95 (00:44.04) / ZW:8.00 (07)	33.65
	Oliver Meyer	2009	Stammertal	HW:8.00 (0.65) / SL:8.60 (00:12.53) / ZW:9.25 (12) / SP:07.80 (07.80)	33.65
75	Thierry Huber	2009	Neftenbach	HW:8.30 (0.70) / SL:8.60 (00:12.50) / FIT:8.80 (00:45.78) / ZW:7.75 (06)	33.45
76	Lars Süsstrunk	2010	Henggart	WE:8.20 (2.11) / SL:8.70 (00:12.35) / FIT:7.75 (00:52.38) / SP:08.65 (08.65)	33.30
77	Alex Güntensperger	2010	Neftenbach	HW:8.30 (0.70) / SL:8.50 (00:12.62) / FIT:7.75 (00:52.25) / ZW:8.50 (09)	33.05
78	André Günthardt	2009	Trüllikon	HW:8.30 (0.70) / SL:8.30 (00:13.00) / FIT:7.90 (00:51.32) / ZW:8.50 (09)	33.00
79	Ibrahim Abbdelgawwa	2009	Henggart	HW:7.70 (0.60) / SL:8.10 (00:13.47) / KU:8.00 (2.36) / SP:09.15 (09.15)	32.95
80	Paul Rützel	2010	Räterschen	BO:08.75 (08.75) / SL:8.70 (00:12.25) / FIT:7.15 (00:56.35) / ZW:8.25 (08)	32.85

Rang	Person	Jg	Verein	Leistungen	Total
80	Cyril Steffen	2009	Seuzach	BO:07.80 (07.80) / SL:8.20 (00:13.28) / FIT:8.35 (00:48.04) / ZW:8.50 (09)	32.85
82	Elias Huber	2009	Seuzach	BO:08.10 (08.10) / SL:8.60 (00:12.51) / FIT:8.20 (00:49.47) / ZW:7.75 (06)	32.65
83	Noel Möckli	2009	Hegi	BO:08.25 (08.25) / WE:8.30 (2.20) / SL:7.50 (00:14.75) / FIT:8.50 (00:47.00)	32.55
84	Harry Jinks	2009	Neftenbach	HW:8.60 (0.75) / SL:9.20 (00:11.78) / FIT:7.30 (00:55.00) / ZW:7.25 (04)	32.35
	Tizian Werner	2010	Trüllikon	HW:7.70 (0.60) / SL:8.40 (00:12.94) / FIT:7.75 (00:52.00) / ZW:8.50 (09)	32.35
86	Gabriel Baltensperger	2009	Brütten	HW:7.10 (0.50) / WE:8.10 (2.03) / SL:8.10 (00:13.50) / FIT:8.95 (00:44.93)	32.25
87	Walo Hungerbühler	2009	Brütten	HW:8.00 (0.65) / WE:8.60 (2.37) / FIT:8.35 (00:48.90) / ZW:7.25 (04)	32.20
	Nik Gutknecht	2009	Neftenbach	HW:7.70 (0.60) / SL:9.10 (00:11.84) / FIT:7.90 (00:51.85) / ZW:7.50 (05)	32.20
89	Fabian Hofmeier	2009	Brütten	HW:7.70 (0.60) / WE:9.20 (2.84) / KU:7.50 (1.88) / ZW:7.75 (06)	32.15
90	Timo Laich	2009	Neftenbach	HW:8.00 (0.65) / SL:8.40 (00:12.91) / FIT:8.35 (00:48.31) / ZW:7.25 (04)	32.00
91	Vedad Turajlic	2009	Töss	BO:07.40 (07.40) / WE:8.10 (2.04) / SL:8.20 (00:13.31) / FIT:7.90 (00:51.97)	31.60
92	Tilo Ritter	2009	Hegi	BO:06.90 (06.90) / WE:8.10 (2.05) / SL:8.00 (00:13.69) / FIT:8.50 (00:47.88)	31.50

Stafetten

Kat. N Mädchen 2001 - 2003		
Rang	Riege	Zeit
1	Trüllikon N1	01:14.77
2	Stammertal N1	01:16.28
3	Buch am Irchel N1	01:16.52
4	Ossingen N1	01:17.25
5	Rheinau N1	01:17.81
6	Pfungen N1	01:18.79
7	Hegi N1	01:19.31
8	Andelfingen N1	01:22.34
9	Henggart N1	01:22.40
10	Oberwinterthur N1	01:22.50
11	Neftenbach N1	01:25.13
12	Andelfingen N2	01:25.62
13	Benken N1	01:30.78

Kat. O Mädchen 2004 - 2006		
Rang	Riege	Zeit
1	Neftenbach O6	01:17.88
2	Henggart O1	01:19.32
3	Andelfingen O1	01:19.53
4	Räterschen O1	01:19.62
5	Wiesendangen O1	01:21.71
6	Buch am Irchel O1	01:21.87
7	Trüllikon O1	01:22.00
8	Neftenbach O2	01:23.32
9	Pfungen O1	01:23.84
10	Oberwinterthur O1	01:23.94
11	Neftenbach O1	01:24.66
12	Andelfingen O2	01:25.09
13	Flurlingen O2	01:25.44
14	Andelfingen O3	01:25.46
15	Neftenbach O3	01:25.47
16	Stammertal O2	01:25.62
17	Neftenbach O4	01:25.87
18	Wiesendangen O2	01:26.29
19	Stammertal O1	01:26.50
20	Flurlingen O1	01:26.78
21	Andelfingen O4	01:27.28
22	Ossingen O1	01:29.22
23	Hegi O1	01:29.37
24	Räterschen O2	01:30.13
25	Neftenbach O5	01:30.50
26	Brütten O2	01:31.43
27	Brütten O1	01:31.75
28	Henggart O2	01:32.56
29	Räterschen O3	01:34.31
30	Benken O1	01:34.41
31	Oberwinterthur O2	01:35.81
32	Pfungen O2	01:36.44

Kat. P Mädchen 2007 und jünger		
Rang	Riege	Zeit
1	Neftenbach P1	01:27.47
2	Andelfingen P7	01:29.38
3	Buch am Irchel P1	01:29.88
4	Stammertal P2	01:31.69
5	Andelfingen P6	01:32.03
6	Rheinau P1	01:32.87
7	Räterschen P1	01:33.50
8	Töss P1	01:33.62
9	Neftenbach P3	01:34.12
10	Rickenbach P1	01:34.35
11	Henggart P1	01:34.82
12	Stammertal P3	01:35.03
13	Neftenbach P2	01:35.31
14	Hegi P1	01:35.50
15	Pfungen P2	01:35.91
16	Wiesendangen P1	01:36.37
17	Wiesendangen P3	01:36.56
18	Flurlingen P1	01:37.50
19	Wiesendangen P2	01:37.72
20	Andelfingen P4	01:38.10
21	Andelfingen P2	01:38.19
22	Wiesendangen P4	01:38.22
23	Andelfingen P3	01:39.03
24	Andelfingen P1	01:39.47
25	Andelfingen P5	01:39.72
26	Trüllikon P1	01:39.78
27	Stammertal P1	01:40.34
28	Neftenbach P4	01:40.38
29	Oberwinterthur P1	01:40.53
30	Brütten P2	01:40.78
30	Pfungen P1	01:40.78
32	Brütten P1	01:40.81
33	Henggart P2	01:40.85
34	Räterschen P2	01:40.88
35	Neftenbach P6	01:41.90

Stafetten

Kat. Q Knaben 2001 - 2003		
Rang	Riege	Zeit
1	Wiesendangen Q1	01:13.53
2	Rheinau Q1	01:13.62
3	Henggart Q1	01:16.04
4	Pfungen Q2	01:16.28
5	Ossingen Q1	01:17.63
6	Buch am Irchel Q1	01:20.72
7	Trüllikon Q1	01:21.47
8	Benken Q1	01:23.38

Kat. R Knaben 2004 - 2006		
Rang	Riege	Zeit
1	Neftenbach R1	01:18.44
2	Pfungen R1	01:18.56
3	Rheinau R1	01:18.78
4	Hegi R2	01:20.15
5	Brütten R1	01:20.78
6	Henggart R1	01:21.31
7	Oberwinterthur R1	01:22.12
8	Buch am Irchel R1	01:22.44
9	Stammertal R1	01:22.72
10	Wiesendangen R1	01:22.94
11	Trüllikon R1	01:24.19
12	Neftenbach R2	01:24.34
13	Seuzach R1	01:25.12
14	Hegi R1	01:26.94
15	Rheinau R1	01:29.50
16	Pfungen R2	01:30.25
17	Seuzach R2	01:33.22
18	Brütten R2	01:38.34

Kat. S Knaben 2007 und jünger		
Rang	Riege	Zeit
1	Stammertal S1	01:24.35
2	Wiesendangen S1	01:27.19
3	Brütten S1	01:27.22
4	Henggart S1	01:28.03
5	Neftenbach S1	01:29.75
6	Rheinau S1	01:30.09
7	Buch am Irchel S1	01:30.75
8	Flurlingen S1	01:31.00
9	Seuzach S1	01:31.19
10	Pfungen S1	01:31.47
11	Ossingen S1	01:31.66
12	Räterschen S1	01:33.34
13	Buch am Irchel S2	01:33.40
14	Hegi S2	01:33.78
15	Stammertal S2	01:34.69
16	Wiesendangen S2	01:35.66
17	Brütten S2	01:37.28
18	Hegi S1	01:37.72
19	Trüllikon S1	01:38.16
20	Neftenbach S2	01:42.03
21	Pfungen S2	01:42.53
22	Seuzach S2	01:44.47
23	Neftenbach S3	01:45.75